

**AMENDMENT REQUEST – FEBRUARY 2013**

<b>School Name:</b>	Edward W. Brooke Charter School (Brooke)	
<b>Amendment Request:</b>	Consolidate 3 charters and application (if granted) Additional seats-105 (35 per school)	
<b>Implementation:</b>	2013-2014	
<b>Year Charter/Opened:</b>	Opened 2002; Renewed 2007, and 2012	
<b>Grades Served:</b>	K-8	
<b>Current Maximum Enrollment:</b>	475	<b>Wait List as of March 2012:</b> 2,611 (across the three Brooke schools-4,574)
<b>Proven Provider Status Required?</b>	Yes	

**Mission Statement:**

“To provide an academically rigorous public education to students from the City of Boston that will ensure that they are prepared to attend and succeed in college.”

**Nature of the Request:**

The school is proposing to consolidate all 3 charters (including the current Brooke 4 application if granted) and increase its total maximum enrollment across the network from 1425 to 1530. Each Brooke location will have a maximum enrollment increase from 475 to 510 students. The flagship Brooke opened in 2002, Brooke 2 opened in 2011, and Brooke 3 opened in 2012. Brooke and Brooke 2 serve Boston; Brooke 3 is a regional school serving Chelsea and Boston. In 2012-2013, the 3 schools serve 925 students. The network of 3 schools will be fully expanded in 2015-2016.

**Strengths and Weaknesses related to Amendment Request:**

**Strengths:**

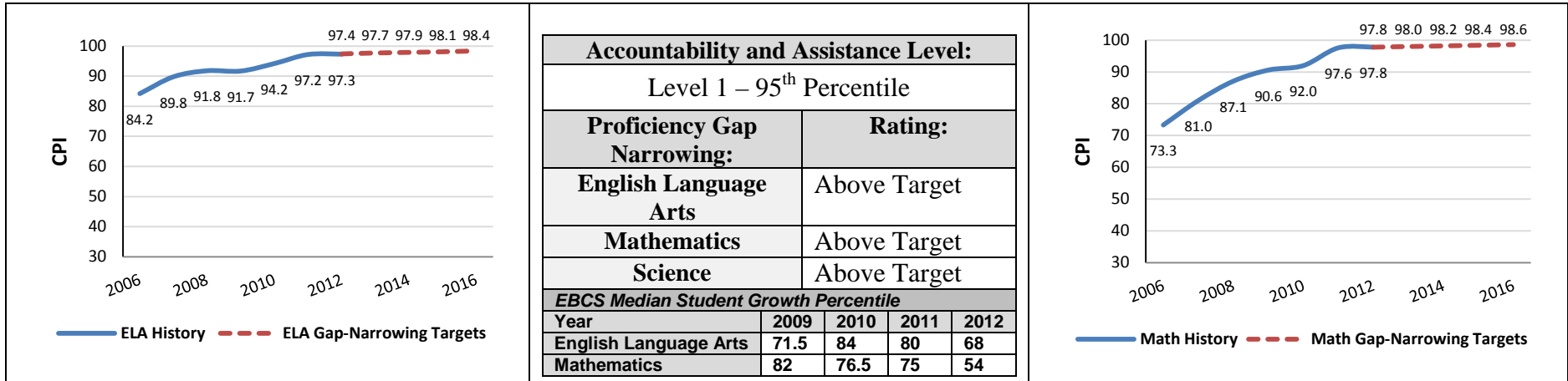
- The board of trustees presently operates three K-8 schools. The original flagship school is in its third charter term; has had continued success with its educational program; and is identified as a Level 1 school under the Department's framework for district accountability and assistance. The recently added network schools are in their second and first year of operation.
- In February 2012, the flagship school was renewed with a condition related to special education service delivery. All instructional staff involved in the delivery of special education services are now either appropriately qualified to do so independently, or work under the supervision and oversight of an appropriately qualified individual. The condition has been met and is expected to be removed.
- The school has been noted by other charter schools as a source of best practices, including its mathematics and character education curriculum.
- While the school acknowledges high suspension rates, they also report the trend of a decreasing attrition rate. They state that their discipline system provides for an effective learning environment with a strong culture of safety and respect. The decreasing attrition has prompted the charter amendment request to add 35 additional seats to each of the existing three schools.
- The group has indicated that a future proposal for a high school hinges on the ability for all Brooke 8<sup>th</sup> grade students to be provided enrollment preference. Consolidation will allow for Brooke students to be guaranteed seats at a future high school.

**Weaknesses:**

- With the net school spending (NSS) cap in place, the present demand for Boston seats, and the absence of a request for the high school grade span, the group would not have access to 1000 additional Boston seats without legislative change to the charter school statute.

- The school does not indicate when it would implement the additional 35 seats at each of the three schools, two of which have yet to reach their present maximum enrollment. The request was submitted in the anticipation that Boston will reach its NSS cap during this year's application and amendment cycle.
- The amendment request does not address the potential challenges of consolidation for a regional Boston-Chelsea K-8.

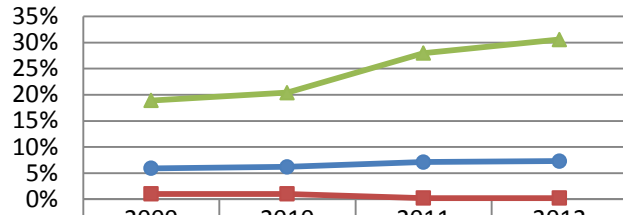
**Edward W. Brooke Charter School  
Academic Performance and Demographic Data**



2011-2012 Demographics (%)		African American	Asian	Hispanic	White	Multi-Race, Non-Hispanic	First Language Not English	Limited English Proficient	Special Education	Low-Income
	<b>Edward Brooke Charter School</b>	<b>71.7%</b>	<b>0.6%</b>	<b>23.6%</b>	<b>1.3%</b>	<b>2.8%</b>	<b>12.8%</b>	<b>0.2%</b>	<b>7.4%</b>	<b>82.3%</b>
(95 Schools)	Comparison Minimum	1.5%	0.0%	9.4%	0.3%	0.0%	0.0%	0.0%	1.2%	28.7%
	Comparison Median	29.8%	2.5%	42.1%	8.4%	2.0%	42.2%	29.6%	18.3%	74.4%
	Comparison Maximum	75.8%	56.6%	90.8%	62.3%	6.6%	86.5%	71.4%	98.4%	92.1%
	Comparison Total	31.8%	9.3%	42.3%	14.1%	2.0%	44.2%	31.5%	17.6%	68.6%
	<b>State</b>	<b>8.3%</b>	<b>5.7%</b>	<b>16.1%</b>	<b>67.0%</b>	<b>2.5%</b>	<b>16.7%</b>	<b>7.3%</b>	<b>17.0%</b>	<b>35.2%</b>

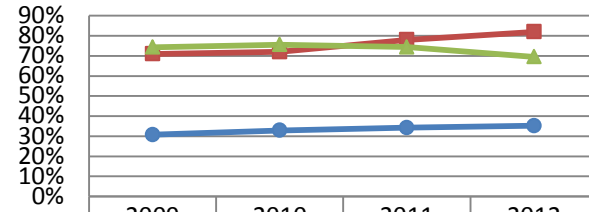
**Edward W. Brooke Charter School  
Demographic Data: Selected Populations**

**English Language Learner**



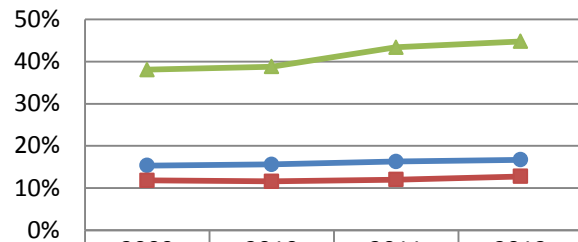
	2009	2010	2011	2012
State	5.9%	6.2%	7.1%	7.3%
Edward W. Brooke	1%	1%	0.2%	0.2%
Boston	18.9%	20.4%	28%	30.6%

**Low Income**



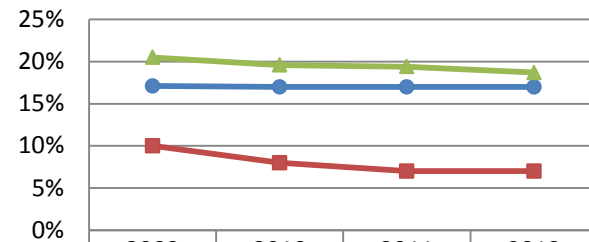
	2009	2010	2011	2012
State	30.7%	32.9%	34.2%	35.2%
Edward W. Brooke	71%	72%	78%	82%
Boston	74.3%	75.6%	74.4%	69.5%

**First Language Not English**



	2009	2010	2011	2012
State	15%	16%	16%	17%
Edward Brooke Charter	12%	12%	12%	13%
Boston	38%	39%	43%	45%

**Special Education**



	2009	2010	2011	2012
State	17.1%	17%	17%	17%
Edward W. Brooke	10%	8%	7%	7%
Boston	20.5%	19.6%	19.4%	18.7%

**Edward W. Brooke Charter School  
Demographic Data: Selected Populations**

