

Proven Provider Analysis Summary

Proven Provider Context:

Charter school boards of trustees must be granted Proven Provider status when requesting to increase the maximum enrollment of an existing Commonwealth charter school if the sending region includes district(s) that have performed in the lowest 10 percent statewide for two consecutive previous years on the MCAS and where the 9 percent net school spending cap has been, or would be exceeded.

In order to determine if a current board of trustees qualifies for Proven Provider status, the Commissioner will consider affirmative, credible evidence of the existing school's success in each of the three accountability areas: academic program success, organizational viability, and faithfulness to the terms of its charter. Pursuant to 603 CMR 1.04(4)(b), applicants for Proven Provider status must demonstrate success in student academic performance and evidence of overall academic program success, including, but not limited to:

- proficiency levels and growth measures on the MCAS or equivalent assessments for all students and for one or more targeted subgroups as defined in M.G.L. c. 71, § 89(i)(3), which are similar to statewide averages in English Language Arts and mathematics for all students in Massachusetts in comparable grades, over no less than a three-year period for cohorts of students; and
- attendance, retention, attrition, in-school suspension rates, out-of-school suspension rates, and if applicable, graduation and dropout data.

Proven Provider Analysis Graphs:

The graphs of student achievement data provide comparison performance percentages for all students and three different subgroups of students: low income, students with disabilities, and English language learners. Each line on the graph represents the student proficiency levels and growth measures levels on the MCAS English Language Arts and mathematics tests for a given school or set of schools during the most recent five years. The state and district averages in the following graphs do not represent the overall average of the state or relevant district. The Department calculates state and district averages for comparable grades by identifying and averaging the specific grades implemented by the charter school of interest during each relevant year. If available, data listed is displayed longitudinally across multiple years in line graph form, with:

- a solid bold black line representing the charter school of interest;
- a dotted green line for the statewide average for comparable grades ;
- a dotted blue line for the comparison district average for comparable grades;
- a dotted orange line for the median performance percentage of all comparison schools ;
- a dotted dark orange line for the first quartile performance percentage of all comparison schools; and
- solid gray lines for enrollment percentage in each individual comparison school (darker gray for charter schools, and lighter gray for district schools).

Definitions:

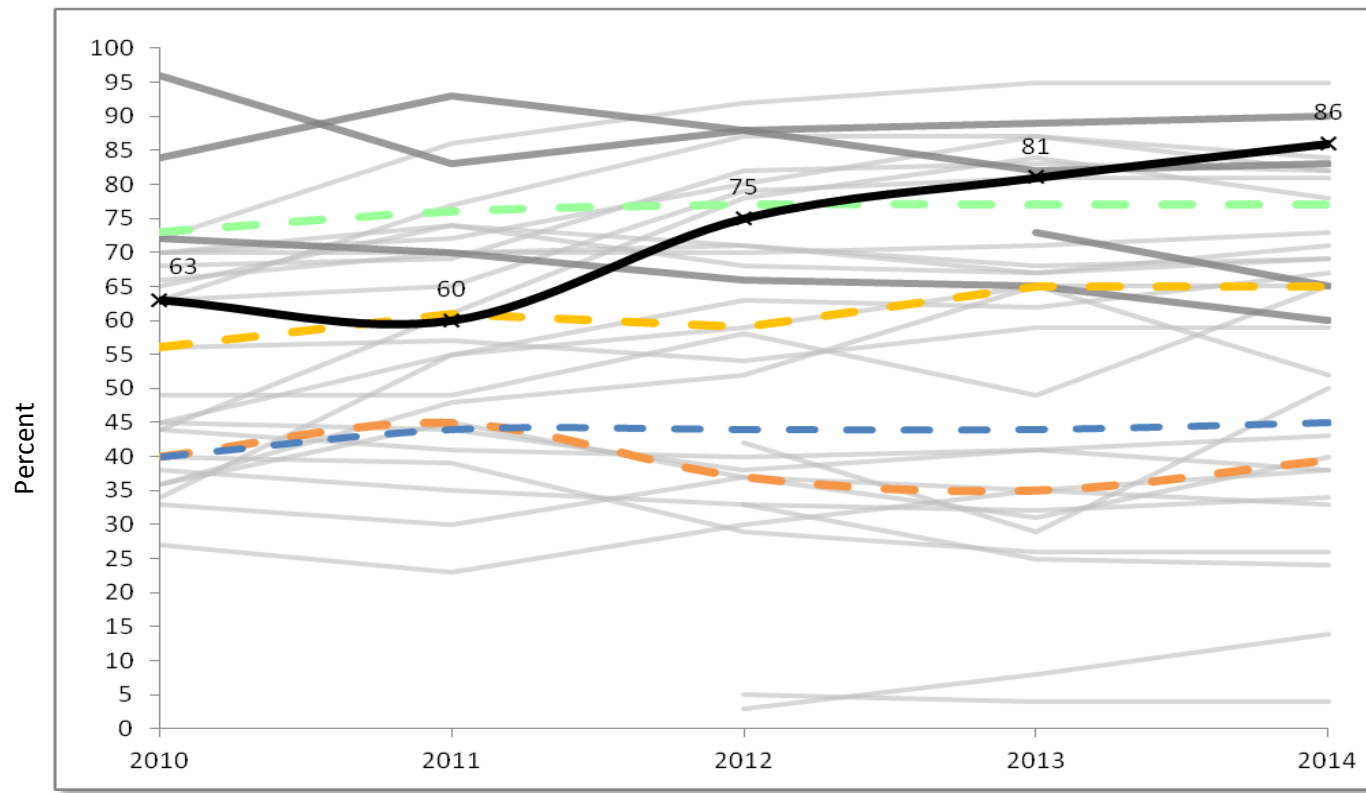
- Comparable grades refers to the grades served by the charter school during each year under review.
- The midpoint value of all comparison schools. This is derived using Microsoft Excel's MEDIAN function.
- The set of displayed comparison schools includes the charter school of interest, and all of the public schools in the charter school's region that serve at least one grade level of students which overlaps with the grade levels served by the charter school.

603 CMR 1.04(4)(b) can be found at: <http://www.doe.mass.edu/lawsregs/603cmr1.html?section=04>.

M.G.L. c. 71, § 89(i)(3) can be found at: <https://malegislature.gov/Laws/GeneralLaws/PartI/TitleXII/Chapter71/Section89>

Hampden Charter School of Science (06-12) - Located in Chicopee - Est. 2009

MCAS - ELA - All



MCAS - English Language Arts % Proficient/Advanced All Students

Charter School
Statewide Average*
Springfield (District)*
Grades served per year

| | 2010 | 2011 | 2012 | 2013 | 2014 |
|-------------------------|------|------|------|------|------|
| Charter School | 63.0 | 60.0 | 75.0 | 81.0 | 86.0 |
| Statewide Average* | 73.0 | 76.0 | 77.0 | 77.0 | 77.0 |
| Springfield (District)* | 40.0 | 44.0 | 44.0 | 44.0 | 45.0 |
| Grades served per year | 6-9 | 6-10 | 6-11 | 6-12 | 6-12 |

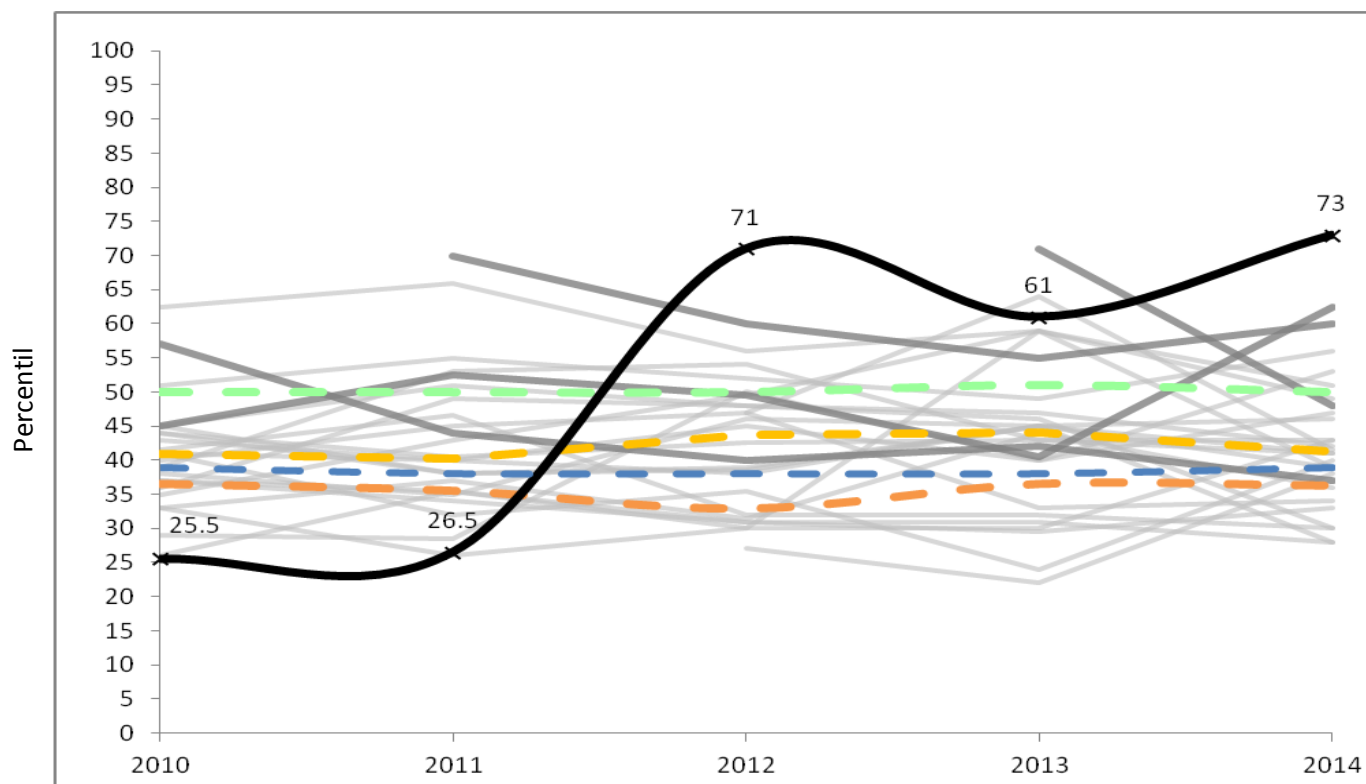
Median
First Quartile

| | | | | | |
|----------------|------|------|------|------|------|
| Median | 56.0 | 61.0 | 59.0 | 65.0 | 65.0 |
| First Quartile | 40.0 | 45.0 | 37.0 | 35.0 | 39.5 |

*Please note that the statewide and district figures are averages across the unique grade configuration for each year of the selected charter school.

— Charter School - - - Statewide Avg - - - District - - - Median - - - First Quartile — Comp. Charter Schools — Comp. District Schools

MCAS - ELA SGP - All



MCAS - English Language Arts Student Growth Percentile (SGP) All Students

Charter School
Statewide Average*
Springfield (District)*
Grades served per year

| | 2010 | 2011 | 2012 | 2013 | 2014 |
|-------------------------|------|------|------|------|------|
| Charter School | 25.5 | 26.5 | 71.0 | 61.0 | 73.0 |
| Statewide Average* | 50.0 | 50.0 | 50.0 | 51.0 | 50.0 |
| Springfield (District)* | 39.0 | 38.0 | 38.0 | 38.0 | 39.0 |
| Grades served per year | 6-9 | 6-10 | 6-11 | 6-12 | 6-12 |

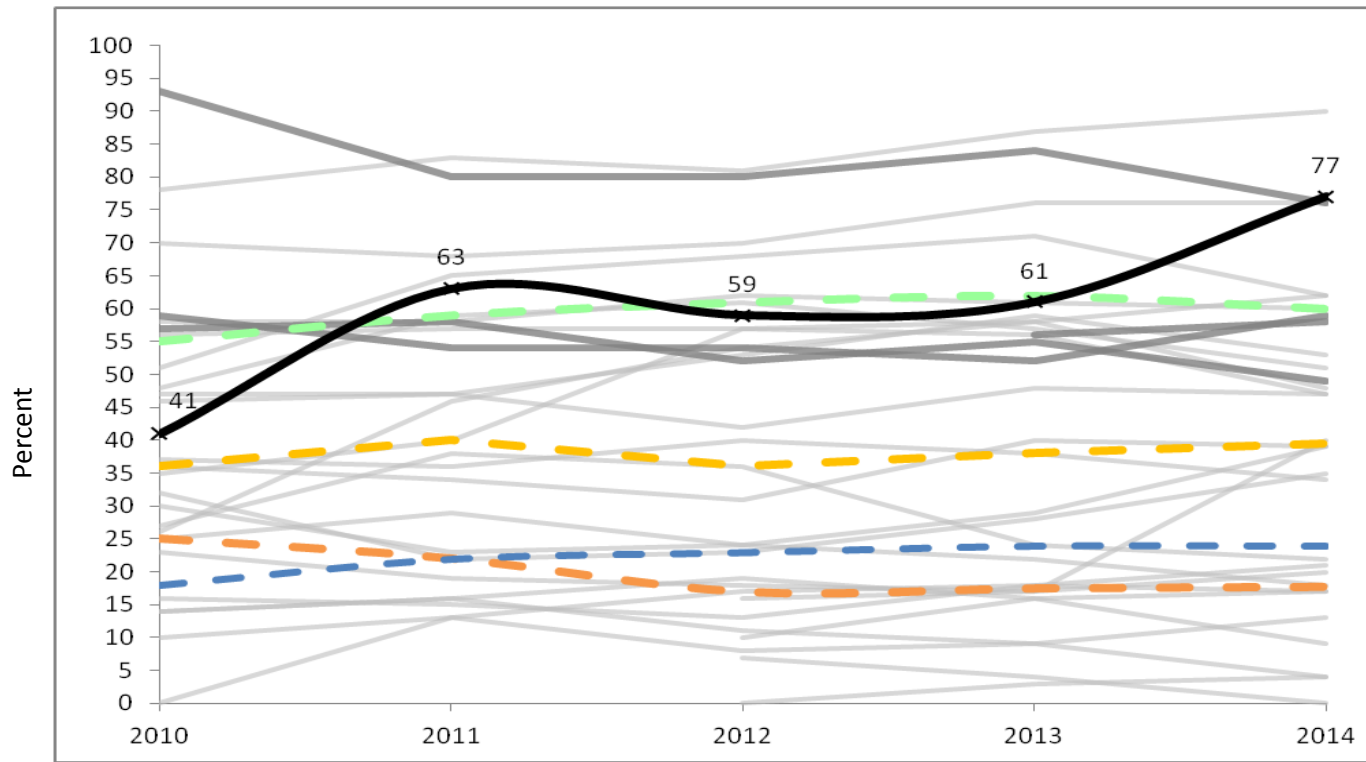
Median
First Quartile

| | | | | | |
|----------------|------|------|------|------|------|
| Median | 41.0 | 40.3 | 43.8 | 44.0 | 41.3 |
| First Quartile | 36.5 | 35.5 | 32.9 | 36.5 | 36.3 |

*Please note that the statewide and district figures are averages across the unique grade configuration for each year of the selected charter school.

Hampden Charter School of Science (06-12) - Located in Chicopee - Est. 2009

MCAS - Math %P/A - All



MCAS - Math % Proficient/Advanced All Students

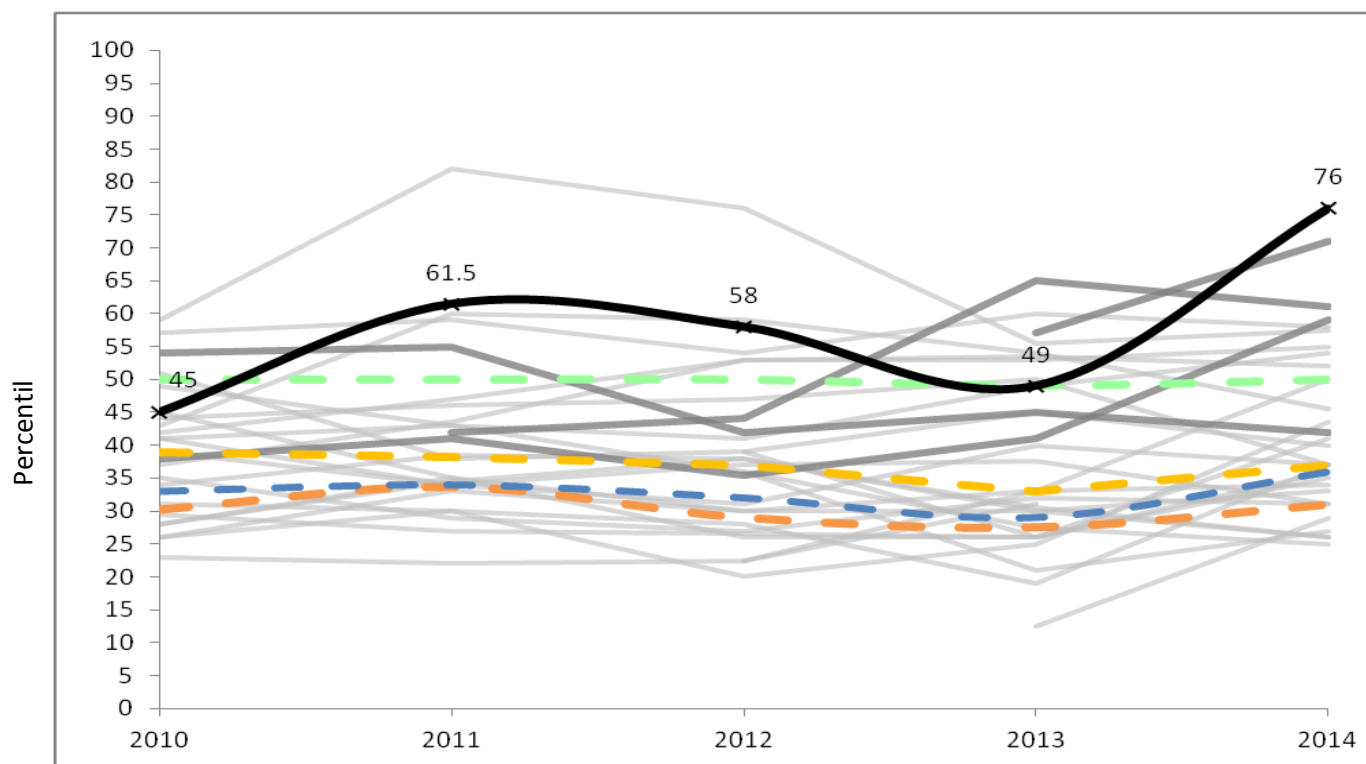
| | 2010 | 2011 | 2012 | 2013 | 2014 |
|-------------------------|------|------|------|------|------|
| Charter School | 41.0 | 63.0 | 59.0 | 61.0 | 77.0 |
| Statewide Average* | 55.0 | 59.0 | 61.0 | 62.0 | 60.0 |
| Springfield (District)* | 18.0 | 22.0 | 23.0 | 24.0 | 24.0 |
| Grades served per year | 6-9 | 6-10 | 6-11 | 6-12 | 6-12 |

| | | | | | |
|----------------|------|------|------|------|------|
| Median | 36.0 | 40.0 | 36.0 | 38.0 | 39.5 |
| First Quartile | 25.0 | 22.0 | 17.0 | 17.5 | 17.8 |

*Please note that the statewide and district figures are averages across the unique grade configuration for each year of the selected charter school.

— Charter School - - - Statewide Avg - - - District - - - Median - - - First Quartile — Comp. Charter Schools — Comp. District Schools

MCAS - Math SGP - All



MCAS - Math Student Growth Percentile (SGP) All Students

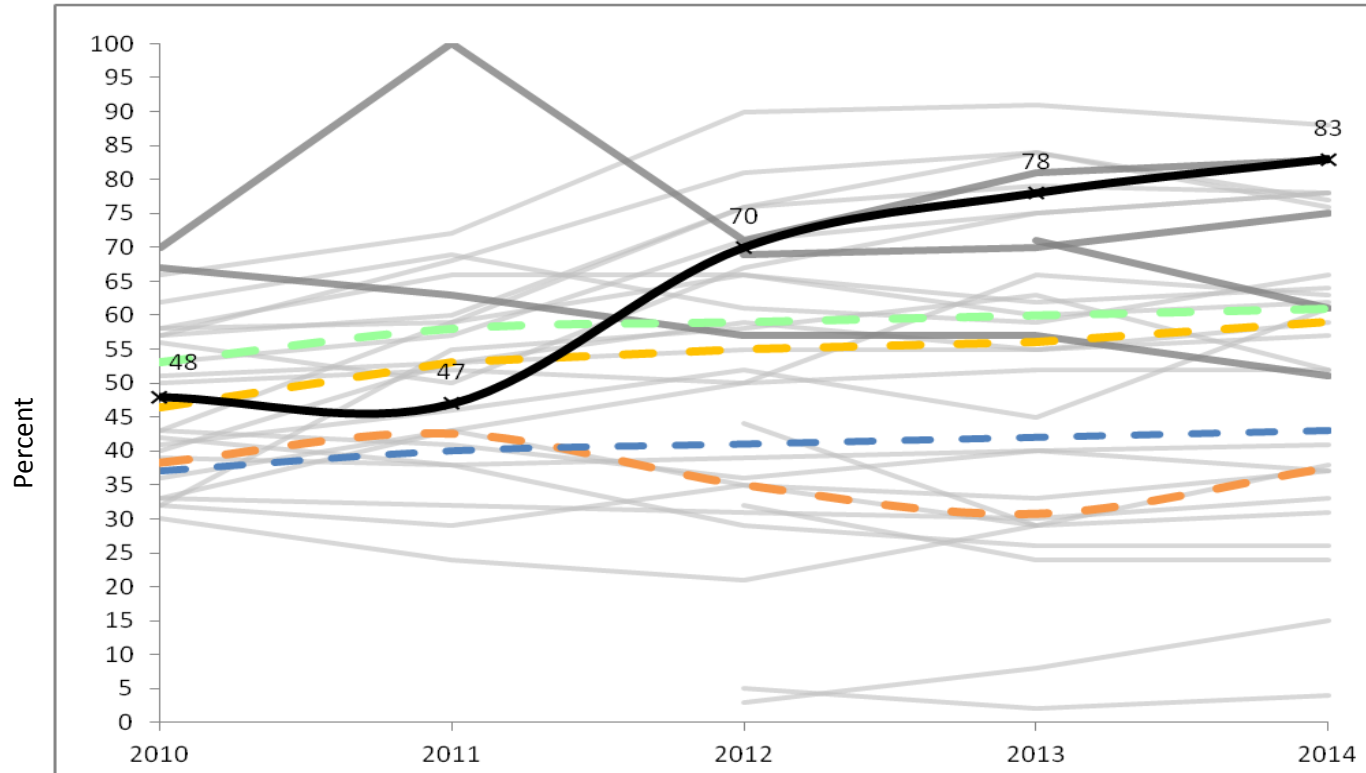
| | 2010 | 2011 | 2012 | 2013 | 2014 |
|-------------------------|------|------|------|------|------|
| Charter School | 45.0 | 61.5 | 58.0 | 49.0 | 76.0 |
| Statewide Average* | 50.0 | 50.0 | 50.0 | 49.0 | 50.0 |
| Springfield (District)* | 33.0 | 34.0 | 32.0 | 29.0 | 36.0 |
| Grades served per year | 6-9 | 6-10 | 6-11 | 6-12 | 6-12 |

| | | | | | |
|----------------|------|------|------|------|------|
| Median | 39.0 | 38.3 | 37.0 | 33.0 | 37.0 |
| First Quartile | 30.3 | 33.8 | 29.0 | 27.5 | 31.0 |

*Please note that the statewide and district figures are averages across the unique grade configuration for each year of the selected charter school.

Hampden Charter School of Science (06-12) - Located in Chicopee - Est. 2009

MCAS - ELA %P/A - Low Inc



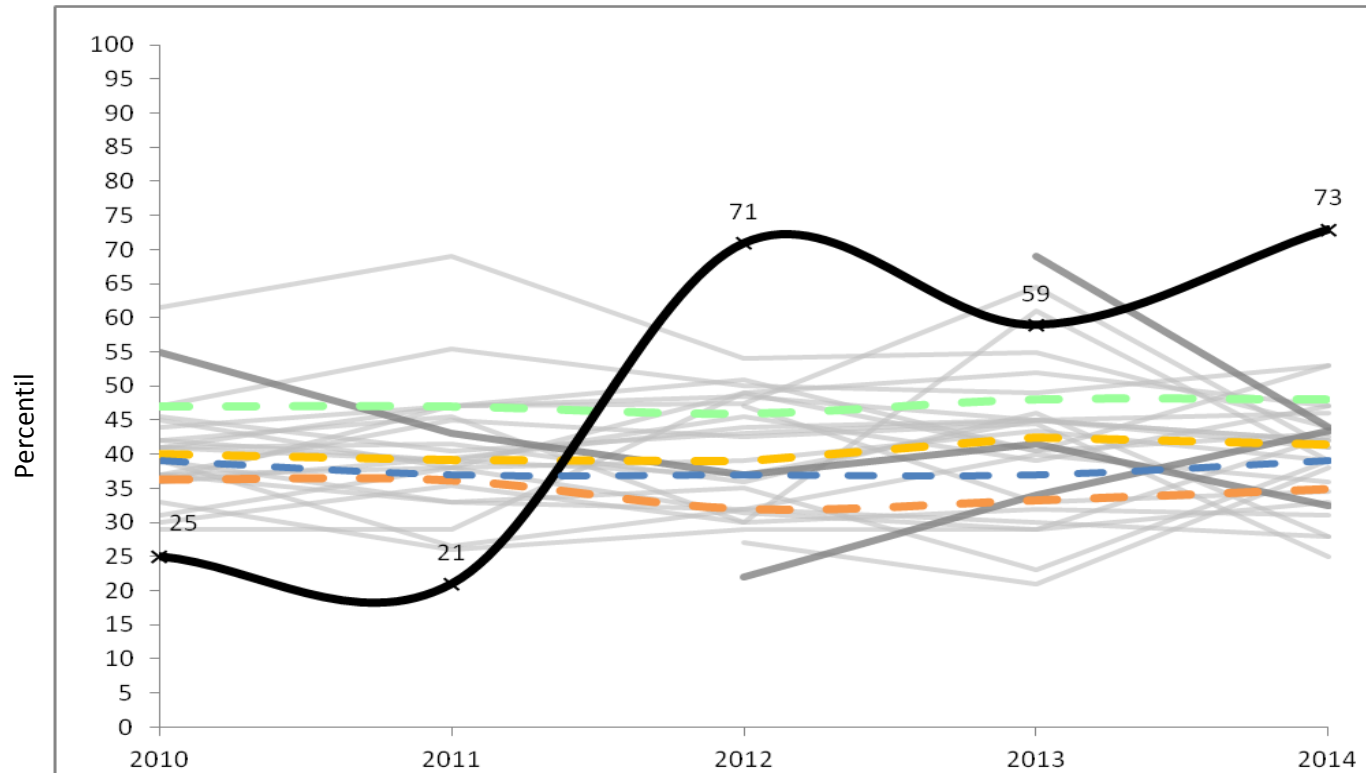
MCAS - English Language Arts % Proficient/Advanced Low Income

| | 2010 | 2011 | 2012 | 2013 | 2014 |
|-------------------------|------|------|------|------|------|
| Charter School | 48.0 | 47.0 | 70.0 | 78.0 | 83.0 |
| Statewide Average* | 53.0 | 58.0 | 59.0 | 60.0 | 61.0 |
| Springfield (District)* | 37.0 | 40.0 | 41.0 | 42.0 | 43.0 |
| Grades served per year | 6-9 | 6-10 | 6-11 | 6-12 | 6-12 |
| Median | 46.5 | 53.0 | 55.0 | 56.0 | 59.0 |
| First Quartile | 38.3 | 42.5 | 35.0 | 30.8 | 37.5 |

*Please note that the statewide and district figures are averages across the unique grade configuration for each year of the selected charter school.

— Charter School - - - Statewide Avg - - - District - - - Median - - - First Quartile — Comp. Charter Schools — Comp. District Schools

MCAS - ELA SGP - Low Inc



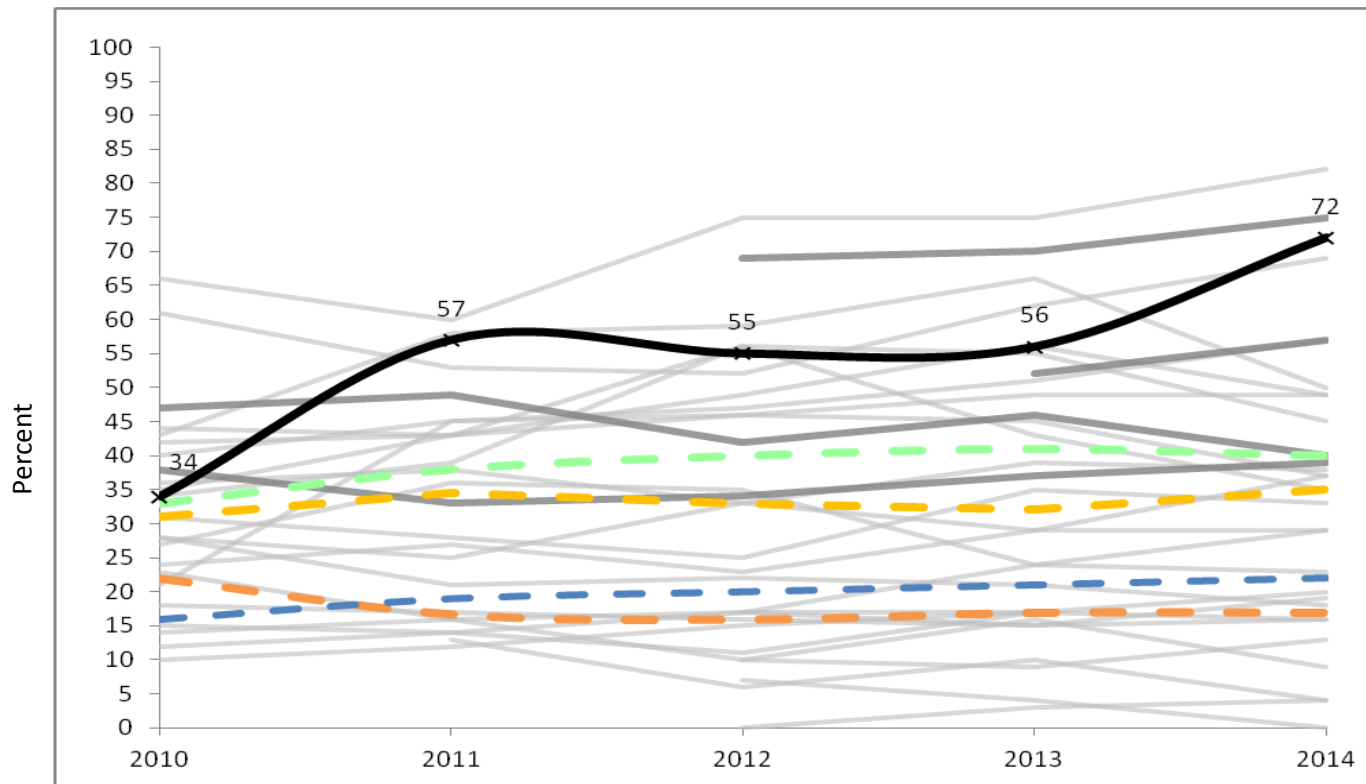
MCAS - English Language Arts Student Growth Percentile (SGP) Low Income

| | 2010 | 2011 | 2012 | 2013 | 2014 |
|-------------------------|------|------|------|------|------|
| Charter School | 25.0 | 21.0 | 71.0 | 59.0 | 73.0 |
| Statewide Average* | 47.0 | 47.0 | 46.0 | 48.0 | 48.0 |
| Springfield (District)* | 39.0 | 37.0 | 37.0 | 37.0 | 39.0 |
| Grades served per year | 6-9 | 6-10 | 6-11 | 6-12 | 6-12 |
| Median | 40.0 | 39.3 | 39.0 | 42.5 | 41.5 |
| First Quartile | 36.3 | 36.1 | 32.0 | 33.3 | 34.9 |

*Please note that the statewide and district figures are averages across the unique grade configuration for each year of the selected charter school.

Hampden Charter School of Science (06-12) - Located in Chicopee - Est. 2009

MCAS - Math %P/A - Low Inc



MCAS - Math % Proficient/Advanced Low Income

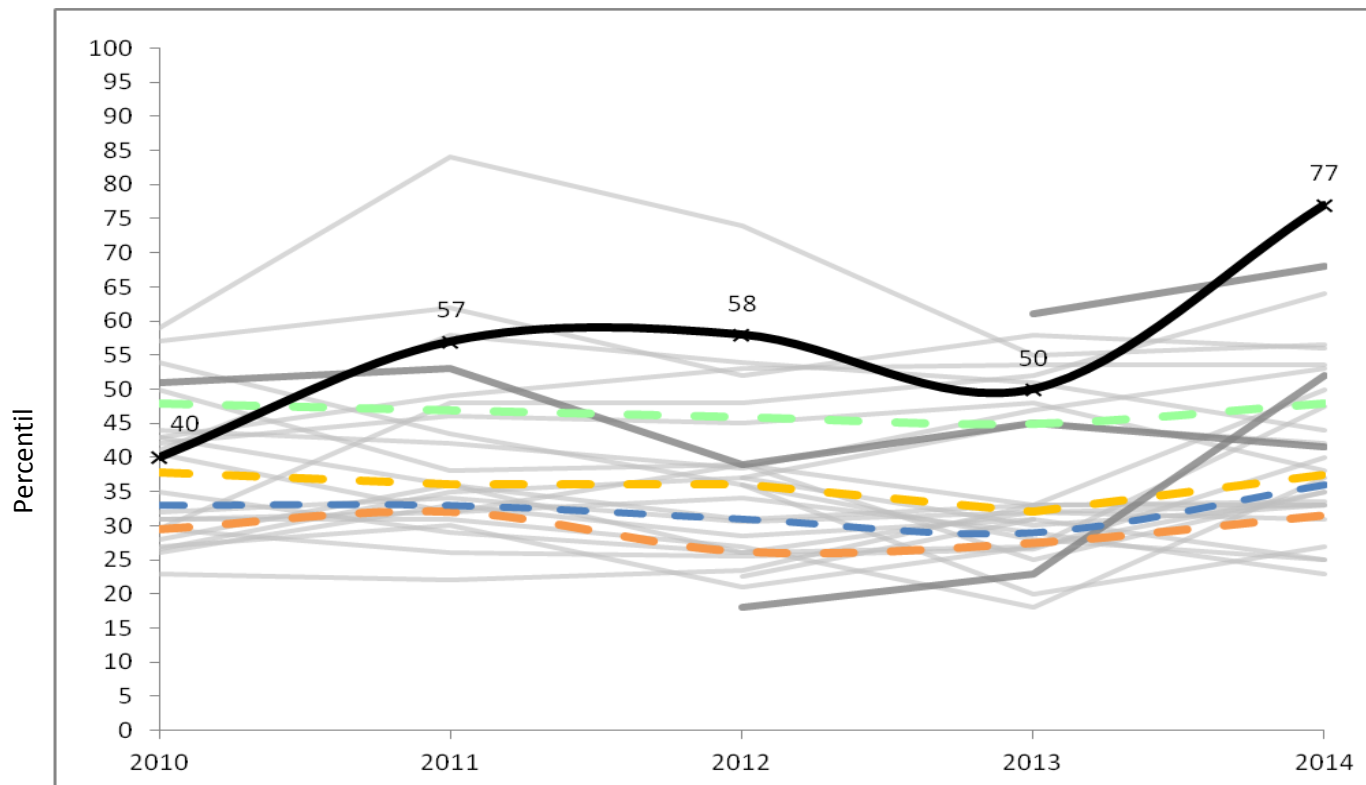
| | 2010 | 2011 | 2012 | 2013 | 2014 |
|-------------------------|------|------|------|------|------|
| Charter School | 34.0 | 57.0 | 55.0 | 56.0 | 72.0 |
| Statewide Average* | 33.0 | 38.0 | 40.0 | 41.0 | 40.0 |
| Springfield (District)* | 16.0 | 19.0 | 20.0 | 21.0 | 22.0 |
| Grades served per year | 6-9 | 6-10 | 6-11 | 6-12 | 6-12 |

| | | | | | |
|----------------|------|------|------|------|------|
| Median | 31.0 | 34.5 | 33.0 | 32.0 | 35.0 |
| First Quartile | 22.0 | 16.8 | 16.0 | 17.0 | 17.0 |

*Please note that the statewide and district figures are averages across the unique grade configuration for each year of the selected charter school.

— Charter School - - - Statewide Avg - - - District - - - Median - - - First Quartile — Comp. Charter Schools — Comp. District Schools

MCAS - Math SGP - Low Inc



MCAS - Math Student Growth Percentile (SGP) Low Income

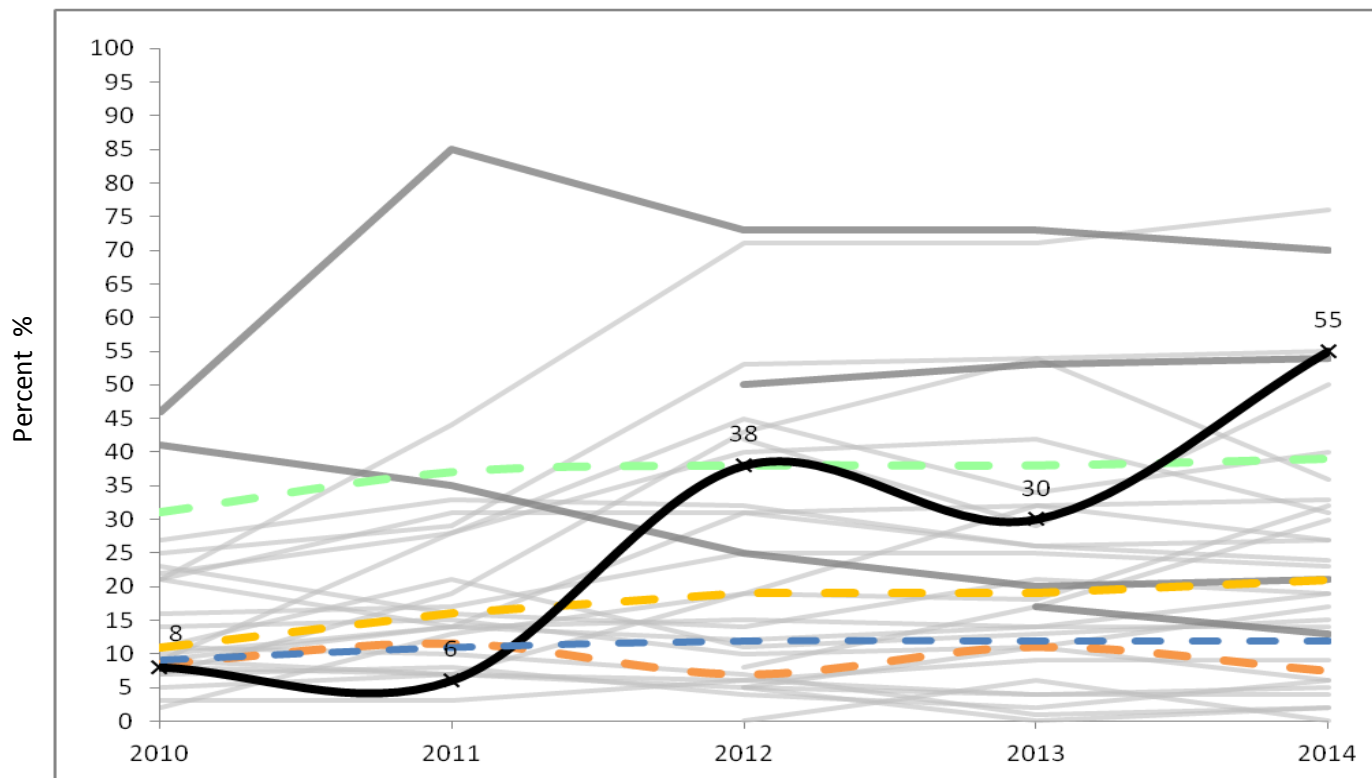
| | 2010 | 2011 | 2012 | 2013 | 2014 |
|-------------------------|------|------|------|------|------|
| Charter School | 40.0 | 57.0 | 58.0 | 50.0 | 77.0 |
| Statewide Average* | 48.0 | 47.0 | 46.0 | 45.0 | 48.0 |
| Springfield (District)* | 33.0 | 33.0 | 31.0 | 29.0 | 36.0 |
| Grades served per year | 6-9 | 6-10 | 6-11 | 6-12 | 6-12 |

| | | | | | |
|----------------|------|------|------|------|------|
| Median | 37.8 | 36.0 | 36.0 | 32.0 | 37.5 |
| First Quartile | 29.5 | 32.0 | 26.3 | 27.5 | 31.5 |

*Please note that the statewide and district figures are averages across the unique grade configuration for each year of the selected charter school.

Hampden Charter School of Science (06-12) - Located in Chicopee - Est. 2009

MCAS - ELA %P/A - SWD



MCAS - English Language Arts % Proficient/Advanced Students with Disabilities

Charter School
Statewide Average*
Springfield (District)*
Grades served per year

| | 2010 | 2011 | 2012 | 2013 | 2014 |
|-------------------------|------|------|------|------|------|
| Charter School | 8.0 | 6.0 | 38.0 | 30.0 | 55.0 |
| Statewide Average* | 31.0 | 37.0 | 38.0 | 38.0 | 39.0 |
| Springfield (District)* | 9.0 | 11.0 | 12.0 | 12.0 | 12.0 |
| Grades served per year | 6-9 | 6-10 | 6-11 | 6-12 | 6-12 |

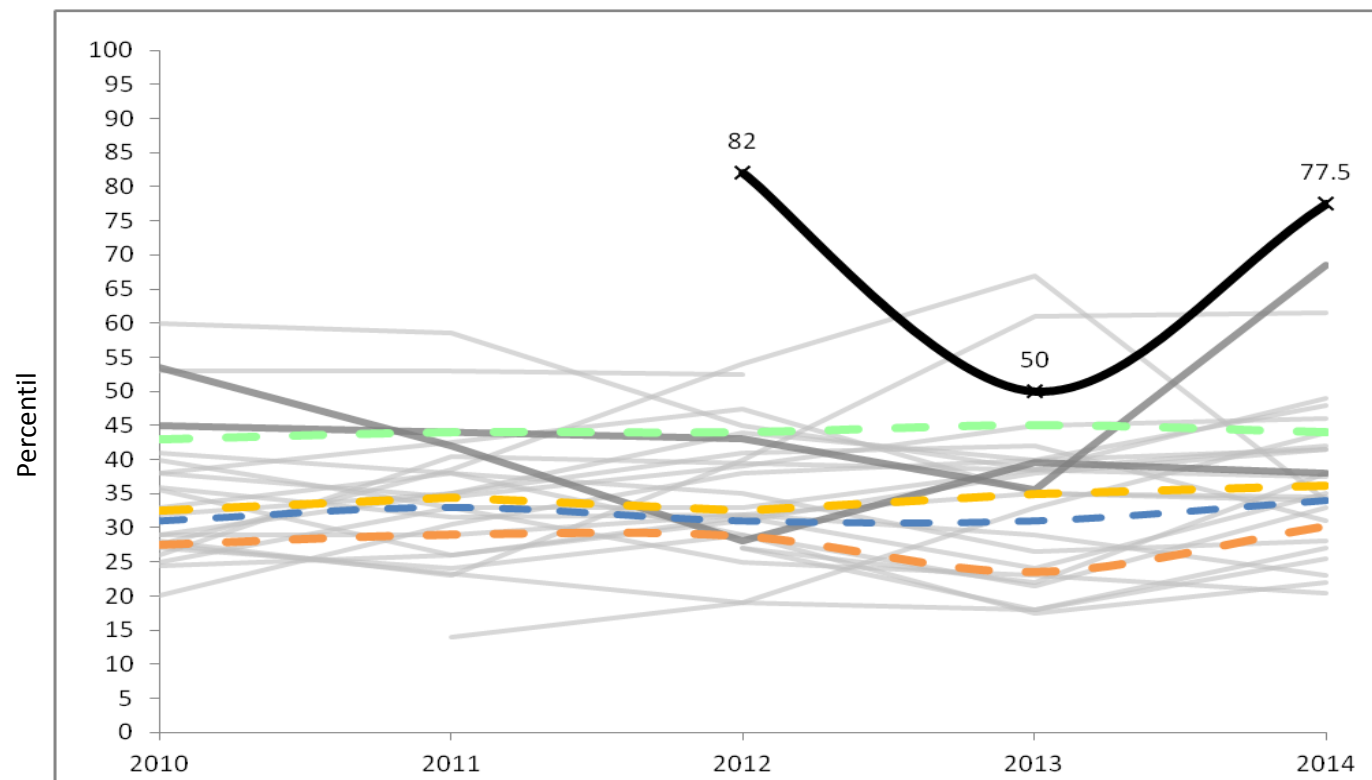
Median
First Quartile

| | | | | | |
|----------------|------|------|------|------|------|
| Median | 11.0 | 16.0 | 19.0 | 19.0 | 21.0 |
| First Quartile | 8.5 | 11.5 | 7.0 | 11.0 | 7.5 |

*Please note that the statewide and district figures are averages across the unique grade configuration for each year of the selected charter school.

— Charter School - - - Statewide Avg - - - District - - - Median - - - First Quartile — Comp. Charter Schools — Comp. District Schools

MCAS - ELA SGP - SWD



MCAS - English Language Arts Student Growth Percentile (SGP) Students with Disabilities

Charter School
Statewide Average*
Springfield (District)*
Grades served per year

| | 2010 | 2011 | 2012 | 2013 | 2014 |
|-------------------------|------|------|------|------|------|
| Charter School | | | 82.0 | 50.0 | 77.5 |
| Statewide Average* | 43.0 | 44.0 | 44.0 | 45.0 | 44.0 |
| Springfield (District)* | 31.0 | 33.0 | 31.0 | 31.0 | 34.0 |
| Grades served per year | 6-9 | 6-10 | 6-11 | 6-12 | 6-12 |

Median
First Quartile

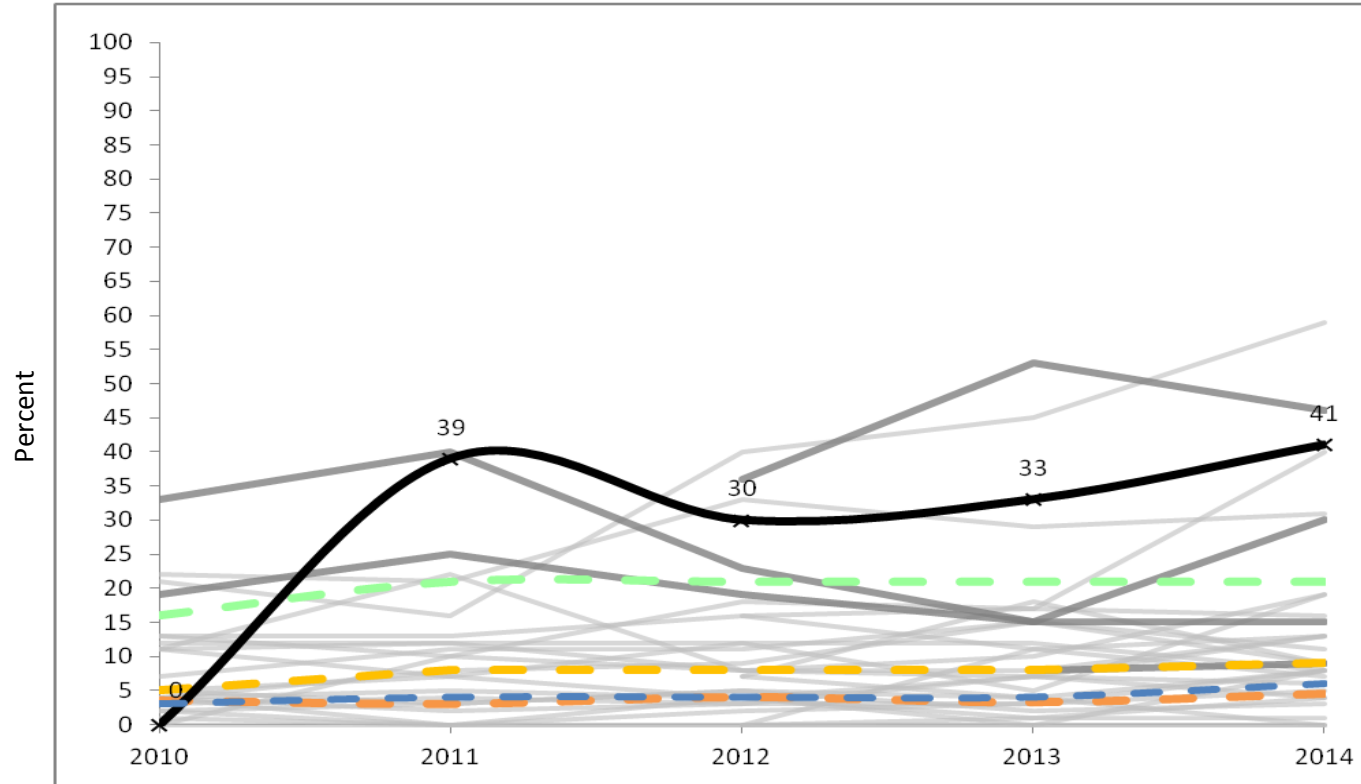
| | | | | | |
|----------------|------|------|------|------|------|
| Median | 32.5 | 34.5 | 32.5 | 35.0 | 36.3 |
| First Quartile | 27.5 | 29.0 | 28.8 | 23.5 | 30.3 |

Cells highlighted red: Median student growth percentiles (SGP) are not calculated if the number of students included in the aggregated SGP is less than 20.

*Please note that the statewide and district figures are averages across the unique grade configuration for each year of the selected charter school.

Hampden Charter School of Science (06-12) - Located in Chicopee - Est. 2009

MCAS - Math %P/A - SWD



MCAS - Math % Proficient/Advanced Students with Disabilities

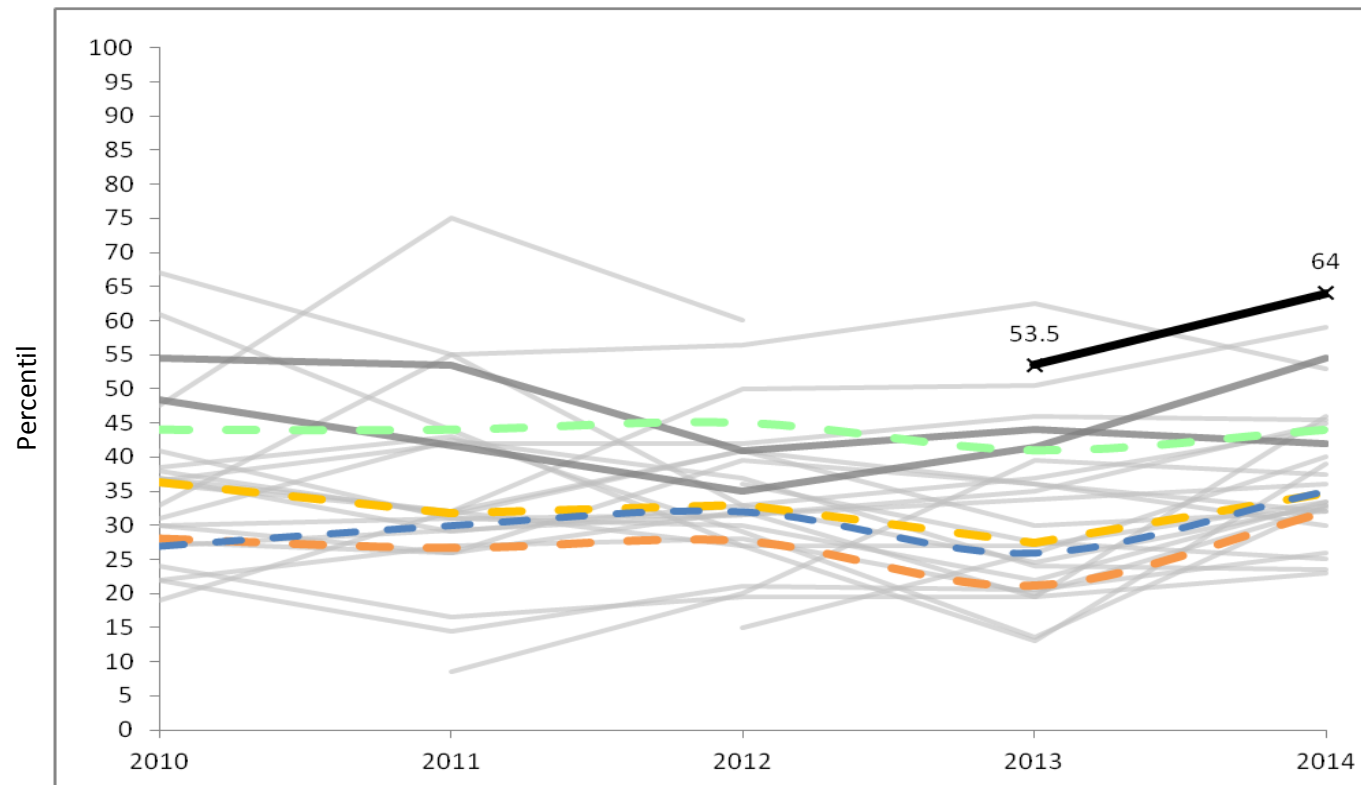
| | 2010 | 2011 | 2012 | 2013 | 2014 |
|-------------------------|------|------|------|------|------|
| Charter School | 0.0 | 39.0 | 30.0 | 33.0 | 41.0 |
| Statewide Average* | 16.0 | 21.0 | 21.0 | 21.0 | 21.0 |
| Springfield (District)* | 3.0 | 4.0 | 4.0 | 4.0 | 6.0 |
| Grades served per year | 6-9 | 6-10 | 6-11 | 6-12 | 6-12 |

| | | | | | |
|----------------|-----|-----|-----|-----|-----|
| Median | 5.0 | 8.0 | 8.0 | 8.0 | 9.0 |
| First Quartile | 3.5 | 3.0 | 4.0 | 3.3 | 4.5 |

*Please note that the statewide and district figures are averages across the unique grade configuration for each year of the selected charter school.

— Charter School - - - Statewide Avg - - - District - - - Median - - - First Quartile — Comp. Charter Schools — Comp. District Schools

MCAS - Math SGP - SWD



MCAS - Math Student Growth Percentile (SGP) Students with Disabilities

| | 2010 | 2011 | 2012 | 2013 | 2014 |
|-------------------------|------|------|------|------|------|
| Charter School | | | | 53.5 | 64.0 |
| Statewide Average* | 44.0 | 44.0 | 45.0 | 41.0 | 44.0 |
| Springfield (District)* | 27.0 | 30.0 | 32.0 | 26.0 | 35.0 |
| Grades served per year | 6-9 | 6-10 | 6-11 | 6-12 | 6-12 |

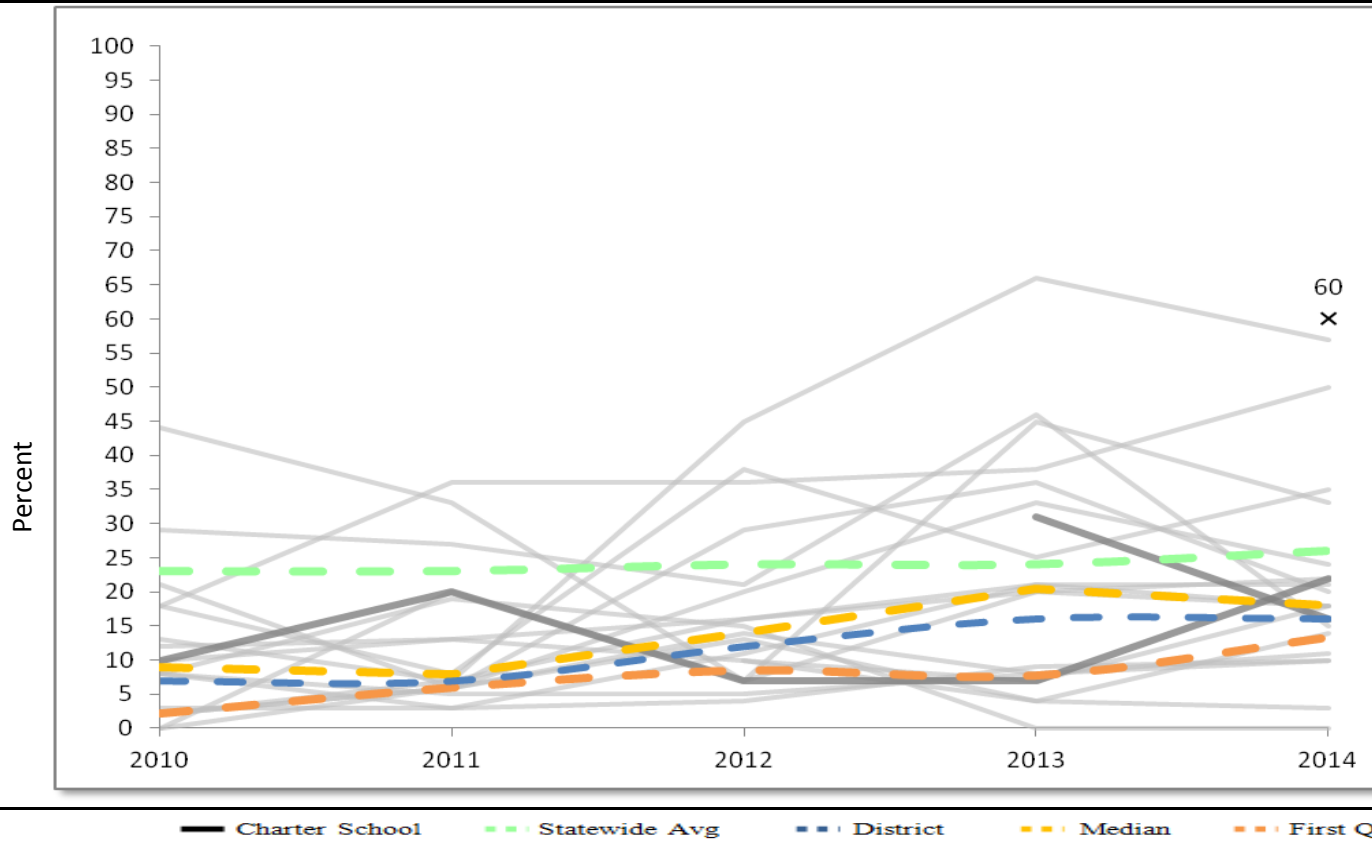
| | | | | | |
|----------------|------|------|------|------|------|
| Median | 36.3 | 31.8 | 33.0 | 27.5 | 34.8 |
| First Quartile | 28.1 | 26.8 | 27.8 | 21.3 | 32.0 |

Cells highlighted red: Median student growth percentiles (SGP) are not calculated if the number of students included in the aggregated SGP is less than 20.

*Please note that the statewide and district figures are averages across the unique grade configuration for each year of the selected charter school.

Hampden Charter School of Science (06-12) - Located in Chicopee - Est. 2009

MCAS - ELA %P/A - ELL



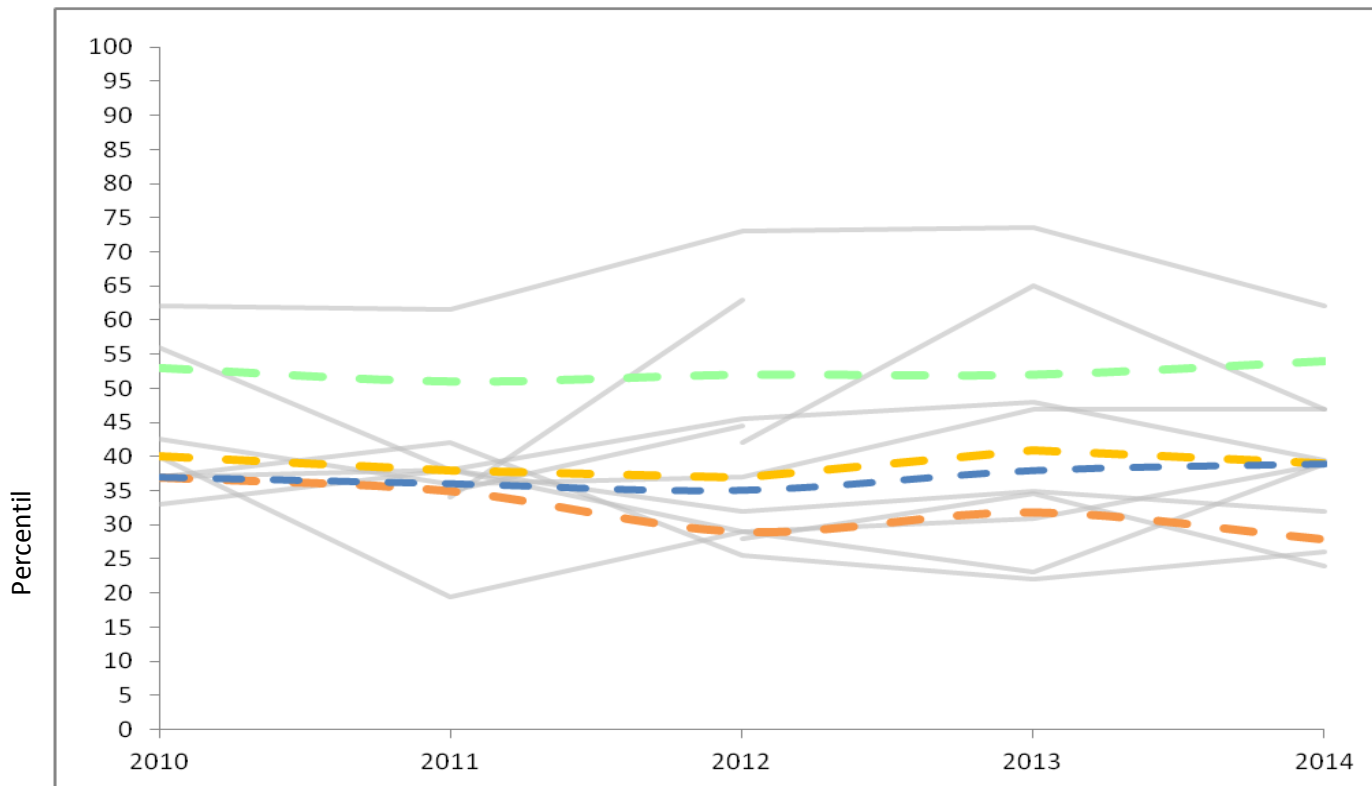
MCAS - English Language Arts % Proficient/Advanced English Language Learners

| | 2010 | 2011 | 2012 | 2013 | 2014 |
|-------------------------|------|------|------|------|------|
| Charter School | | | | | 60.0 |
| Statewide Average* | 23.0 | 23.0 | 24.0 | 24.0 | 26.0 |
| Springfield (District)* | 7.0 | 7.0 | 12.0 | 16.0 | 16.0 |
| Grades served per year | 6-9 | 6-10 | 6-11 | 6-12 | 6-12 |
| Median | 9.0 | 8.0 | 14.0 | 20.5 | 18.0 |
| First Quartile | 2.3 | 6.0 | 8.5 | 7.8 | 13.3 |

Cells highlighted red: Achievement level percentages are not calculated for groups with fewer than 10 students.

*Please note that the statewide and district figures are averages across the unique grade configuration for each year of the selected charter school.

MCAS - ELA SGP - ELL



MCAS - English Language Arts Student Growth Percentile (SGP) English Language Learners

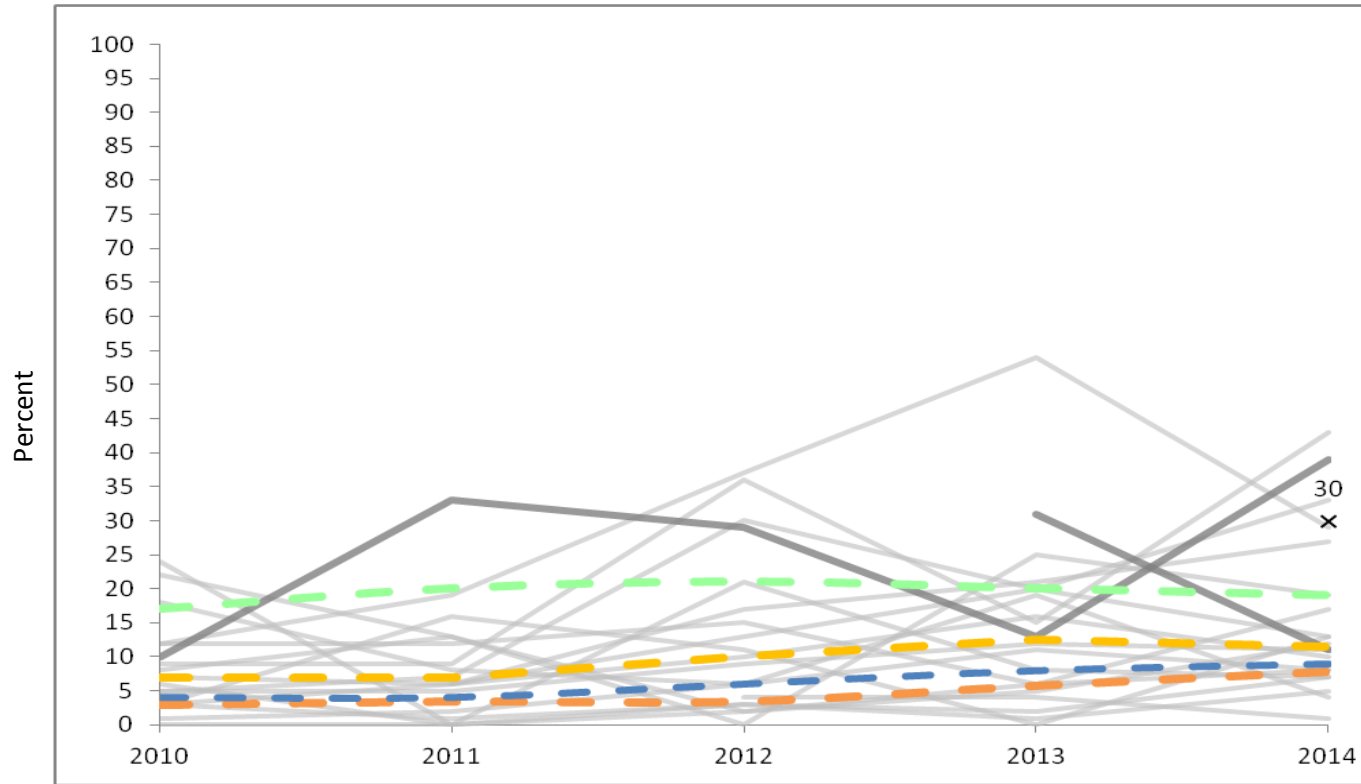
| | 2010 | 2011 | 2012 | 2013 | 2014 |
|-------------------------|------|------|------|------|------|
| Charter School | | | | | |
| Statewide Average* | 53.0 | 51.0 | 52.0 | 52.0 | 54.0 |
| Springfield (District)* | 37.0 | 36.0 | 35.0 | 38.0 | 39.0 |
| Grades served per year | 6-9 | 6-10 | 6-11 | 6-12 | 6-12 |
| Median | 40.0 | 38.0 | 37.0 | 41.0 | 39.0 |
| First Quartile | 37.0 | 35.0 | 29.0 | 31.9 | 27.9 |

Cells highlighted red: Median student growth percentiles (SGP) are not calculated if the number of students included in the aggregated SGP is less than 20.

*Please note that the statewide and district figures are averages across the unique grade configuration for each year of the selected charter school.

Hampden Charter School of Science (06-12) - Located in Chicopee - Est. 2009

MCAS - Math %P/A - ELL



MCAS - Math % Proficient/Advanced English Language Learners

Charter School
Statewide Average*
Springfield (District)*
Grades served per year

| | 2010 | 2011 | 2012 | 2013 | 2014 |
|-------------------------|------|------|------|------|------|
| Charter School | | | | | 30.0 |
| Statewide Average* | 17.0 | 20.0 | 21.0 | 20.0 | 19.0 |
| Springfield (District)* | 4.0 | 4.0 | 6.0 | 8.0 | 9.0 |
| Grades served per year | 6-9 | 6-10 | 6-11 | 6-12 | 6-12 |

Median
First Quartile

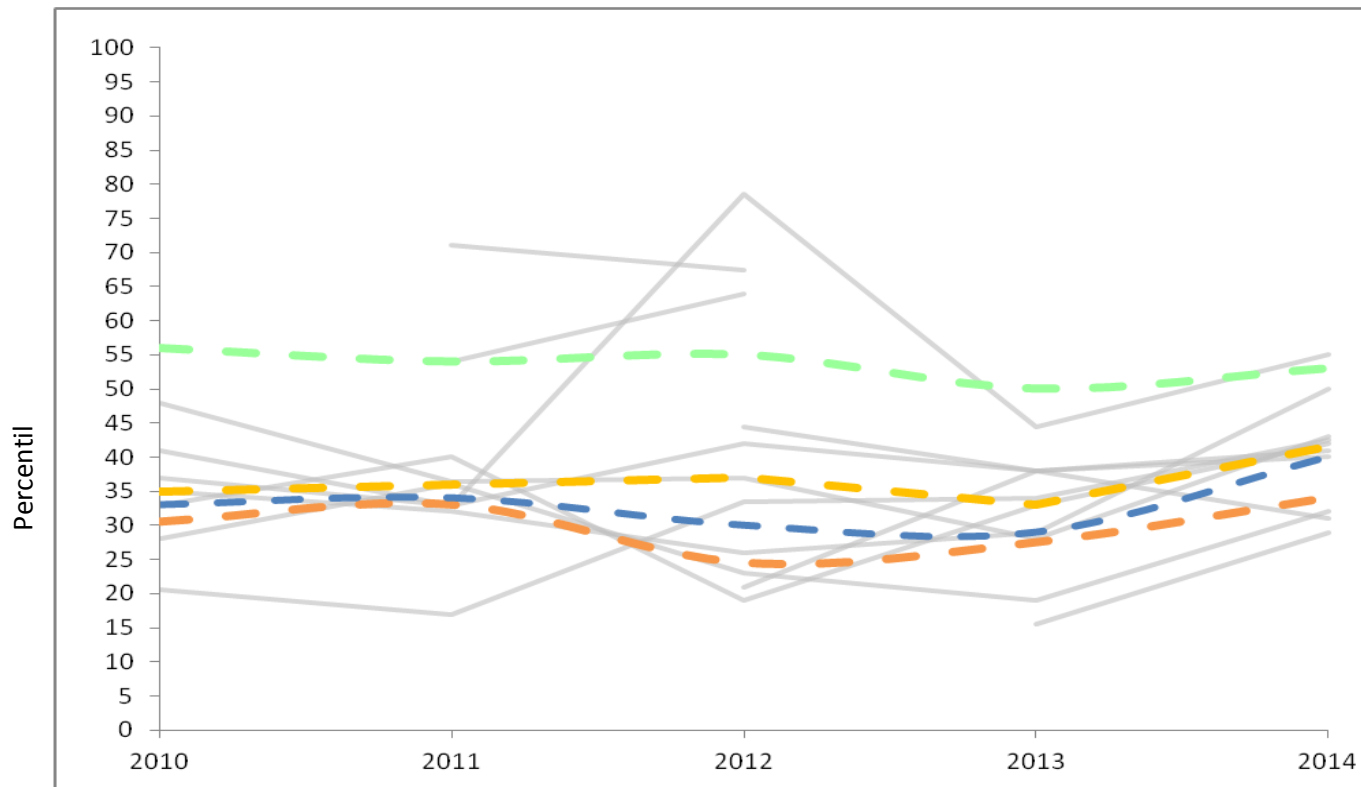
| | | | | | |
|----------------|-----|-----|------|------|------|
| Median | 7.0 | 7.0 | 10.0 | 12.5 | 11.5 |
| First Quartile | 3.0 | 3.5 | 3.5 | 5.8 | 7.8 |

Cells highlighted red: Achievement level percentages are not calculated for groups with fewer than 10 students.

*Please note that the statewide and district figures are averages across the unique grade configuration for each year of the selected charter school.

— Charter School - - - Statewide Avg - - - District - - - Median - - - First Quartile — Comp. Charter Schools — Comp. District Schools

MCAS - Math SGP - ELL



MCAS - Math Student Growth Percentile (SGP) English Language Learners

Charter School
Statewide Average*
Springfield (District)*
Grades served per year

| | 2010 | 2011 | 2012 | 2013 | 2014 |
|-------------------------|------|------|------|------|------|
| Charter School | | | | | |
| Statewide Average* | 56.0 | 54.0 | 55.0 | 50.0 | 53.0 |
| Springfield (District)* | 33.0 | 34.0 | 30.0 | 29.0 | 40.0 |
| Grades served per year | 6-9 | 6-10 | 6-11 | 6-12 | 6-12 |

Median
First Quartile

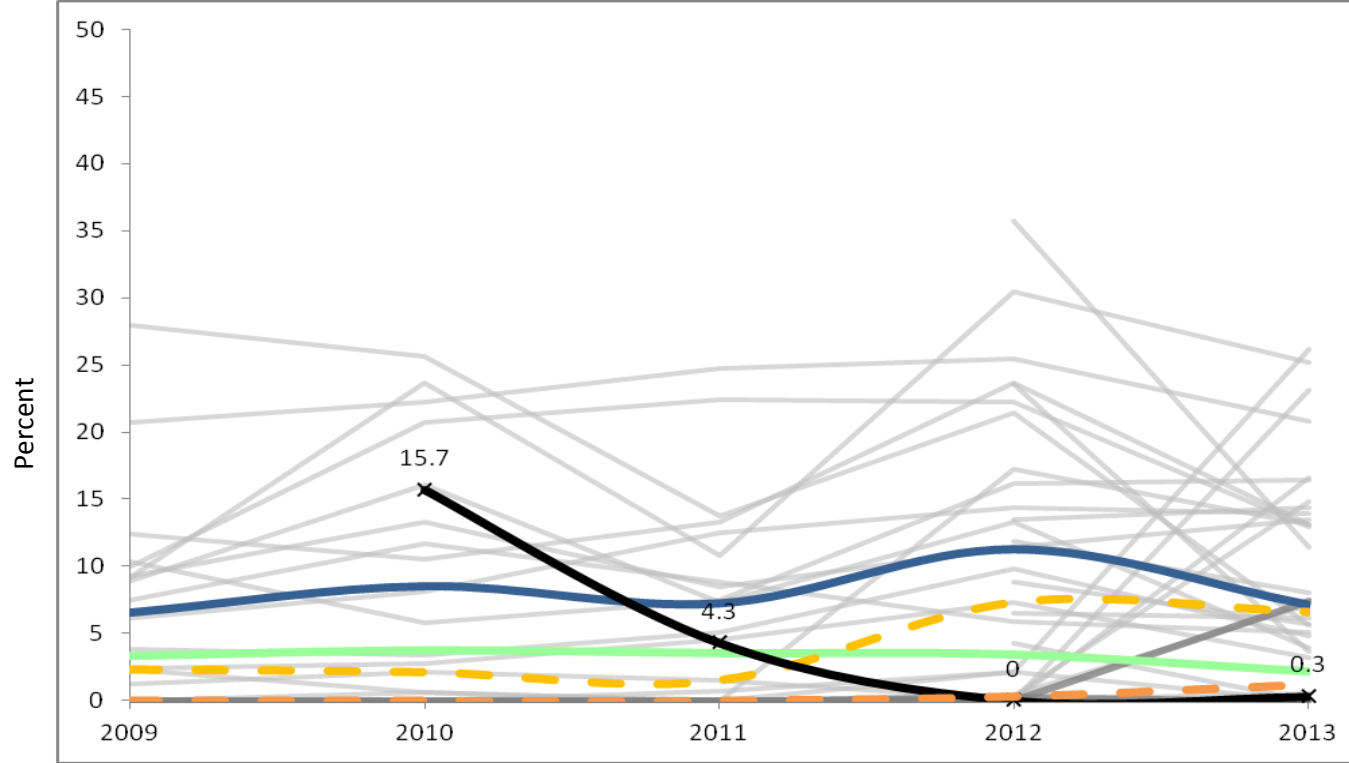
| | | | | | |
|----------------|------|------|------|------|------|
| Median | 35.0 | 36.0 | 37.0 | 33.0 | 41.5 |
| First Quartile | 30.5 | 33.0 | 24.5 | 27.5 | 34.0 |

Cells highlighted red: Median student growth percentiles (SGP) are not calculated if the number of students included in the aggregated SGP is less than 20.

*Please note that the statewide and district figures are averages across the unique grade configuration for each year of the selected charter school.

Hampden Charter School of Science (06-12) - Located in Chicopee - Est. 2009

Student Indicator - In-School Suspension %



In-School Suspension %

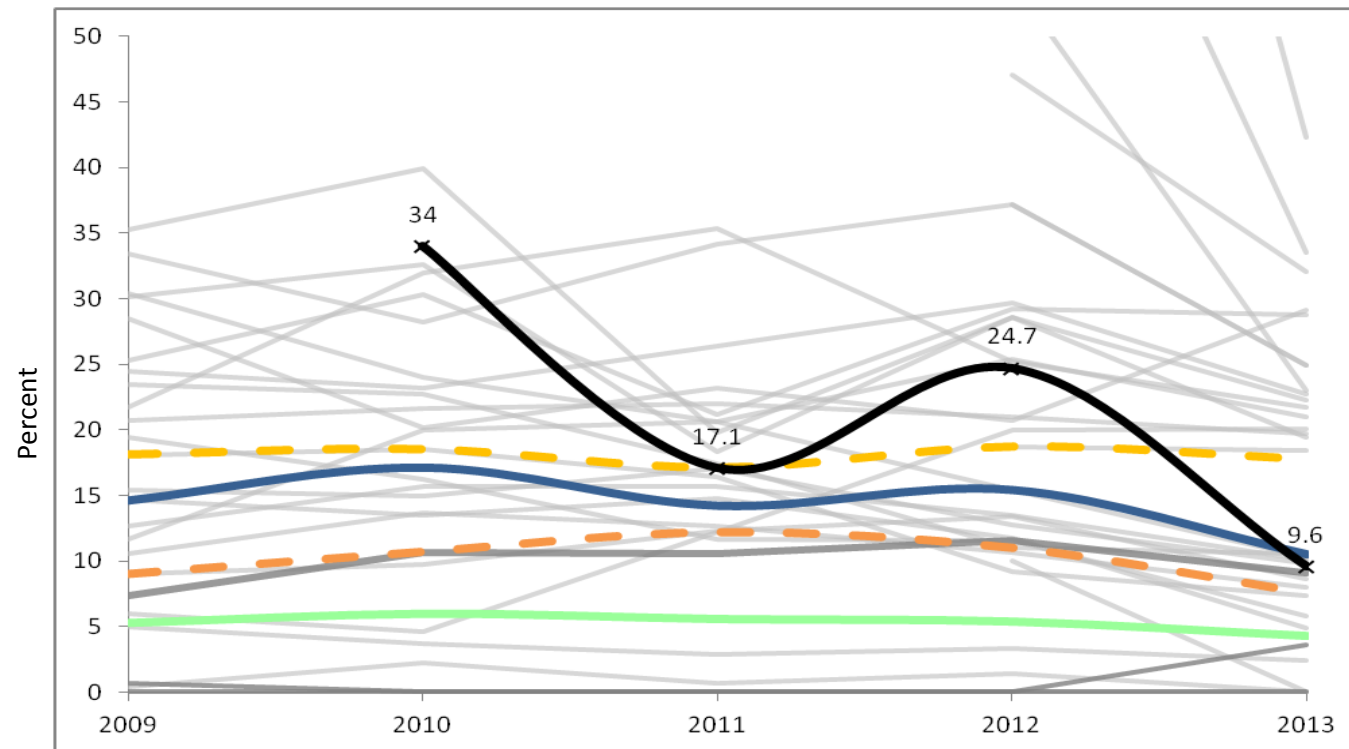
| | 2009 | 2010 | 2011 | 2012 | 2013 |
|--------------------------|------|------|------|------|------|
| Charter School | | 15.7 | 4.3 | 0.0 | 0.3 |
| Statewide Average** | 3.3 | 3.7 | 3.5 | 3.4 | 2.2 |
| Springfield (District)** | 6.5 | 8.5 | 7.2 | 11.3 | 7.1 |
| Grades served per year | 6-9 | 6-10 | 6-11 | 6-12 | 6-12 |

| | | | | | |
|----------------|-----|-----|-----|-----|-----|
| Median | 2.3 | 2.1 | 1.5 | 7.3 | 6.6 |
| First Quartile | 0.0 | 0.0 | 0.0 | 0.3 | 1.2 |

**Please note the statewide and district figures are averages for all grades, specific to the subgroup or indicator specified.

— Charter School — Statewide Avg — District - - - Median - - - First Quartile — Comp. Charter Schools — Comp. District Schools

Student Indicator - Out-of-School Suspension %



Out-of-School Suspension %

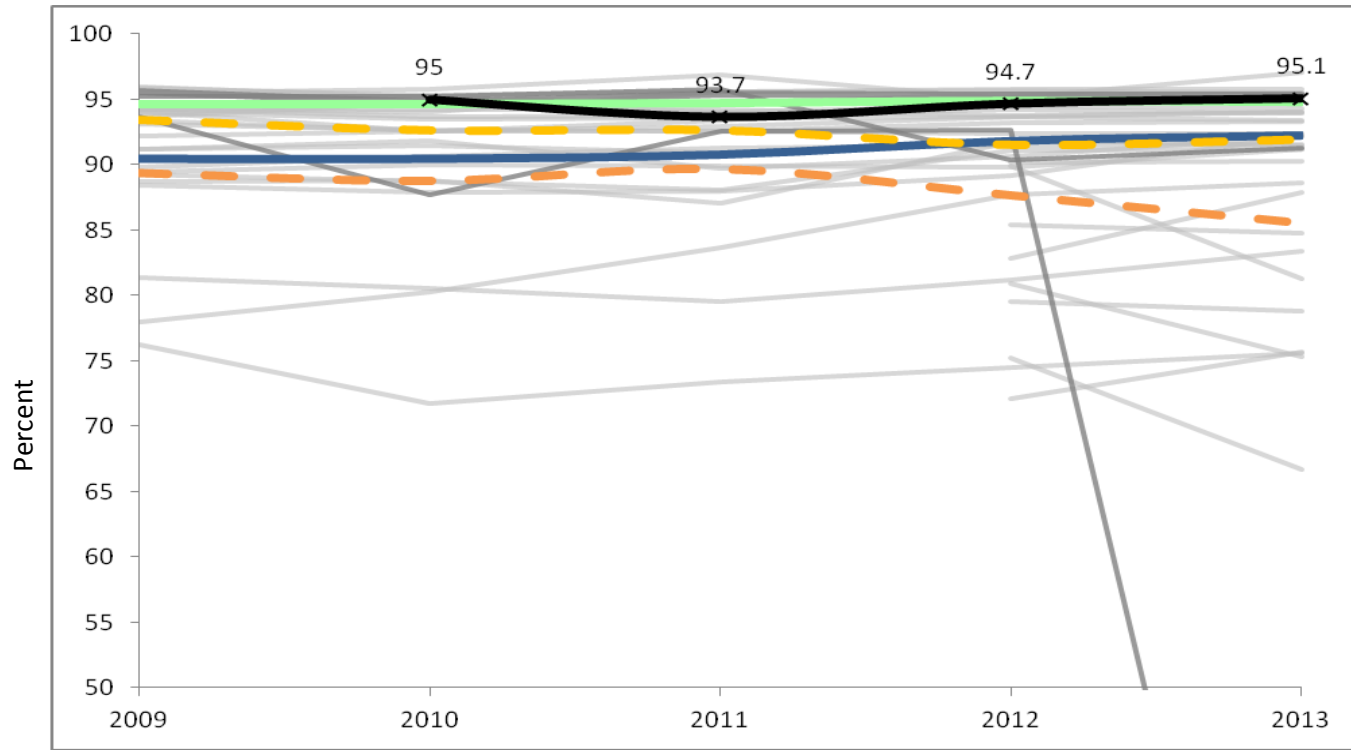
| | 2009 | 2010 | 2011 | 2012 | 2013 |
|--------------------------|------|------|------|------|------|
| Charter School | | 34.0 | 17.1 | 24.7 | 9.6 |
| Statewide Average** | 5.3 | 6.0 | 5.6 | 5.4 | 4.3 |
| Springfield (District)** | 14.6 | 17.1 | 14.2 | 15.4 | 10.5 |
| Grades served per year | 6-9 | 6-10 | 6-11 | 6-12 | 6-12 |

| | | | | | |
|----------------|------|------|------|------|------|
| Median | 18.1 | 18.5 | 17.1 | 18.7 | 17.8 |
| First Quartile | 9.0 | 10.7 | 12.2 | 11.0 | 7.6 |

**Please note the statewide and district figures are averages for all grades, specific to the subgroup or indicator specified.

Hampden Charter School of Science (06-12) - Located in Chicopee - Est. 2009

Student Indicator - Attendance %



Attendance %

Charter School
Statewide Average**
Springfield (District)**
Grades served per year

| | 2009 | 2010 | 2011 | 2012 | 2013 |
|--------------------------|------|------|------|------|------|
| Charter School | | 95.0 | 93.7 | 94.7 | 95.1 |
| Statewide Average** | 94.6 | 94.6 | 94.7 | 94.9 | 94.8 |
| Springfield (District)** | 90.5 | 90.5 | 90.8 | 91.8 | 92.2 |
| Grades served per year | 6-9 | 6-10 | 6-11 | 6-12 | 6-12 |

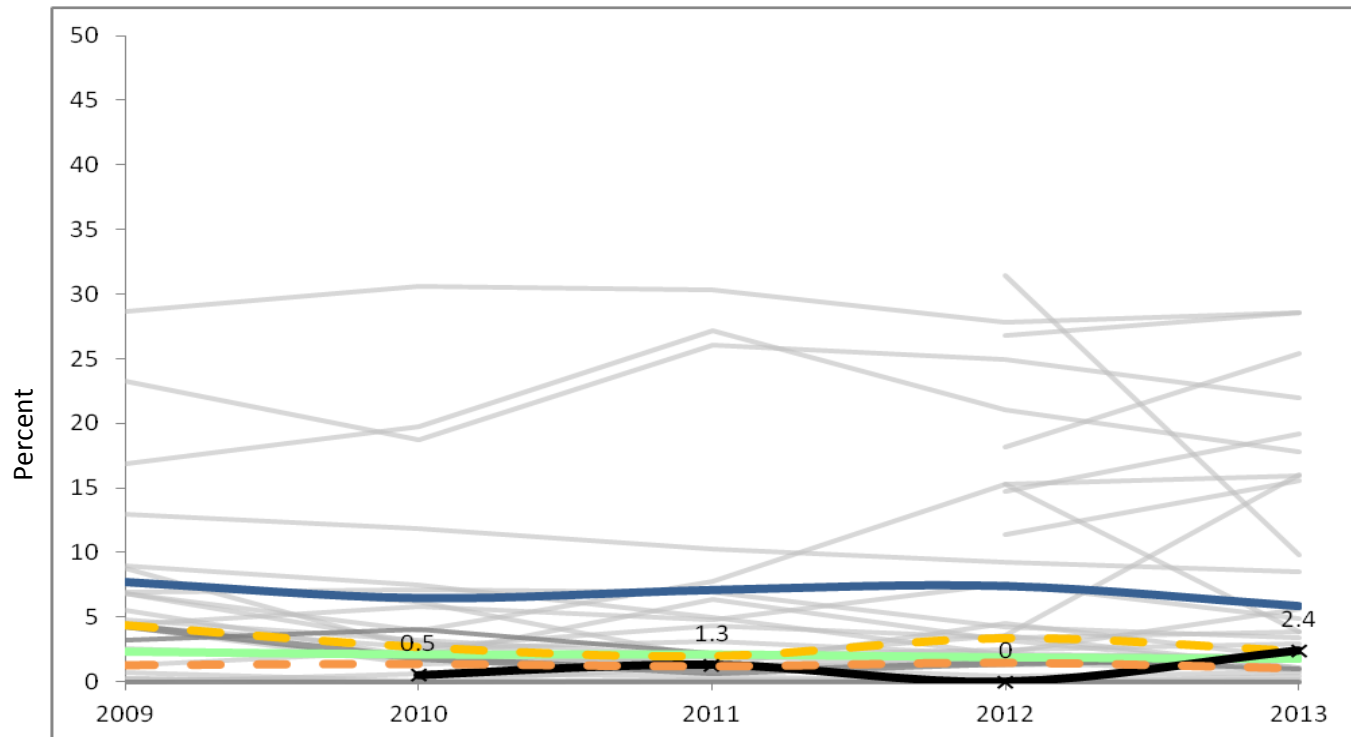
Median
First Quartile

| | 2009 | 2010 | 2011 | 2012 | 2013 |
|----------------|------|------|------|------|------|
| Median | 93.4 | 92.6 | 92.6 | 91.5 | 91.9 |
| First Quartile | 89.4 | 88.8 | 89.7 | 87.7 | 85.6 |

**Please note the statewide and district figures are averages for all grades, specific to the subgroup or indicator specified.

— Charter School — Statewide Avg — District - - - Median - - - First Quartile — Comp. Charter Schools — Comp. District Schools

Student Indicator - Retention %



Retention %

Charter School
Statewide Average**
Springfield (District)**
Grades served per year

| | 2009 | 2010 | 2011 | 2012 | 2013 |
|--------------------------|------|------|------|------|------|
| Charter School | | 0.5 | 1.3 | 0.0 | 2.4 |
| Statewide Average** | 2.3 | 2.1 | 2.1 | 1.9 | 1.8 |
| Springfield (District)** | 7.7 | 6.5 | 7.1 | 7.4 | 5.9 |
| Grades served per year | 6-9 | 6-10 | 6-11 | 6-12 | 6-12 |

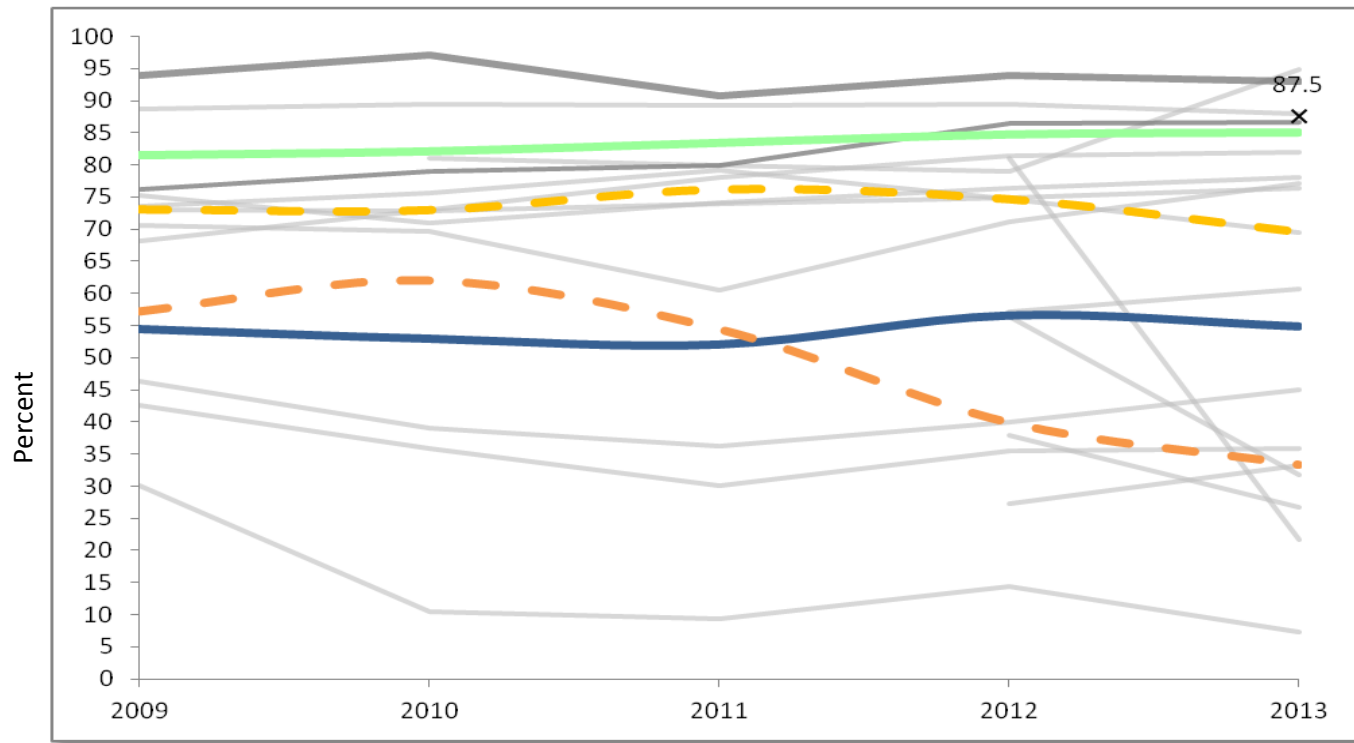
Median
First Quartile

| | 2009 | 2010 | 2011 | 2012 | 2013 |
|----------------|------|------|------|------|------|
| Median | 4.4 | 2.7 | 2.0 | 3.4 | 2.4 |
| First Quartile | 1.3 | 1.4 | 1.2 | 1.5 | 1.0 |

**Please note the statewide and district figures are averages for all grades, specific to the subgroup or indicator specified.

Hampden Charter School of Science (06-12) - Located in Chicopee - Est. 2009

Student Indicator - 4-yr Graduation %



4-Year Graduation %

Charter School
 Statewide Average**
 Springfield (District)**
 Grades served per year

| | 2009 | 2010 | 2011 | 2012 | 2013 |
|--------------------------|------|------|------|------|------|
| Charter School | | | | | 87.5 |
| Statewide Average** | 81.5 | 82.1 | 83.4 | 84.7 | 85.0 |
| Springfield (District)** | 54.5 | 53.0 | 52.1 | 56.6 | 54.9 |
| Grades served per year | 6-9 | 6-10 | 6-11 | 6-12 | 6-12 |

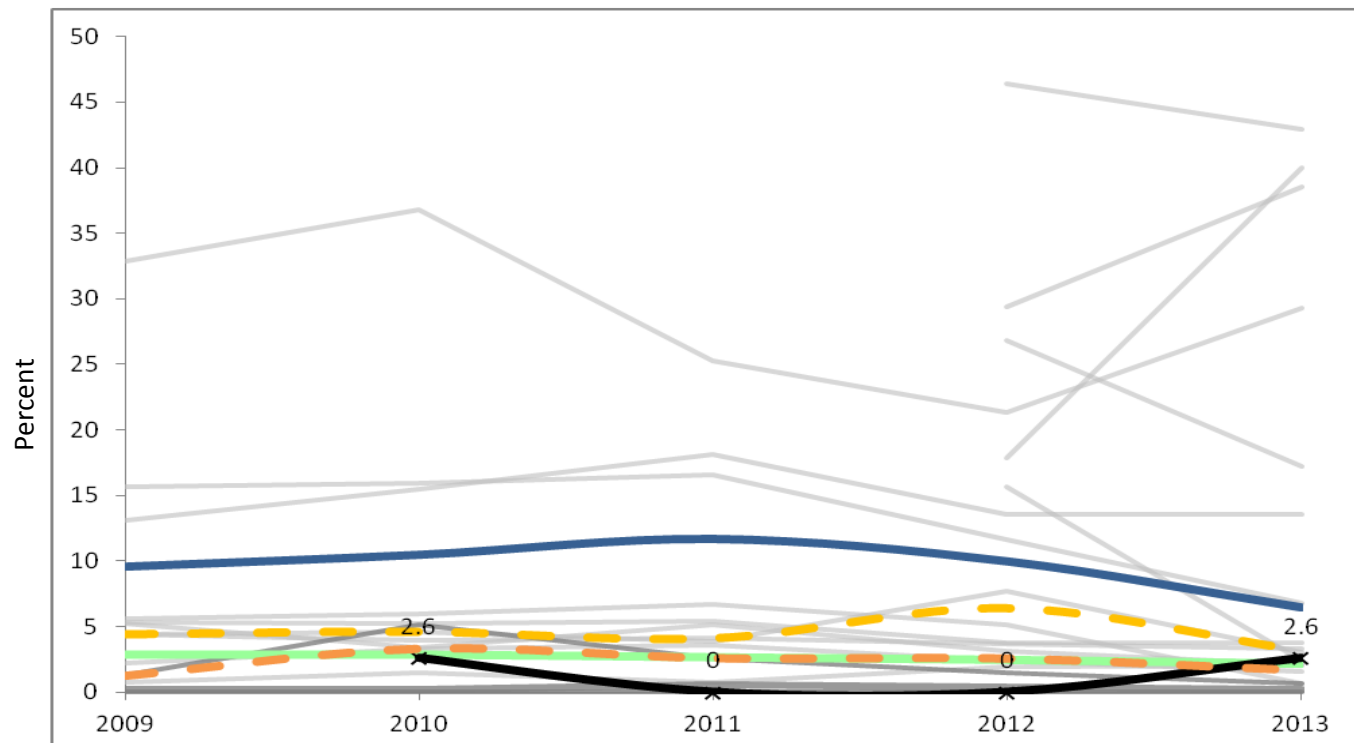
Median
 First Quartile

| | 2009 | 2010 | 2011 | 2012 | 2013 |
|----------------|------|------|------|------|------|
| Median | 73.0 | 72.9 | 76.1 | 74.6 | 69.5 |
| First Quartile | 57.2 | 62.0 | 54.5 | 39.9 | 33.3 |

**Please note the statewide and district figures are averages for all grades, specific to the subgroup or indicator specified.

— Charter School
 — Statewide Avg
 — District
 - - - Median
 - - - First Quartile
 — Comp. Charter Schools
 — Comp. District Schools

Student Indicator - Droppput %



Dropout %

Charter School
 Statewide Average**
 Springfield (District)**
 Grades served per year

| | 2009 | 2010 | 2011 | 2012 | 2013 |
|--------------------------|------|------|------|------|------|
| Charter School | | 2.6 | 0.0 | 0.0 | 2.6 |
| Statewide Average** | 2.9 | 2.9 | 2.7 | 2.5 | 2.2 |
| Springfield (District)** | 9.6 | 10.5 | 11.7 | 10.0 | 6.5 |
| Grades served per year | 6-9 | 6-10 | 6-11 | 6-12 | 6-12 |

Median
 First Quartile

| | 2009 | 2010 | 2011 | 2012 | 2013 |
|----------------|------|------|------|------|------|
| Median | 4.4 | 4.6 | 4.1 | 6.4 | 3.2 |
| First Quartile | 1.3 | 3.3 | 2.6 | 2.6 | 1.7 |

**Please note the statewide and district figures are averages for all grades, specific to the subgroup or indicator specified.