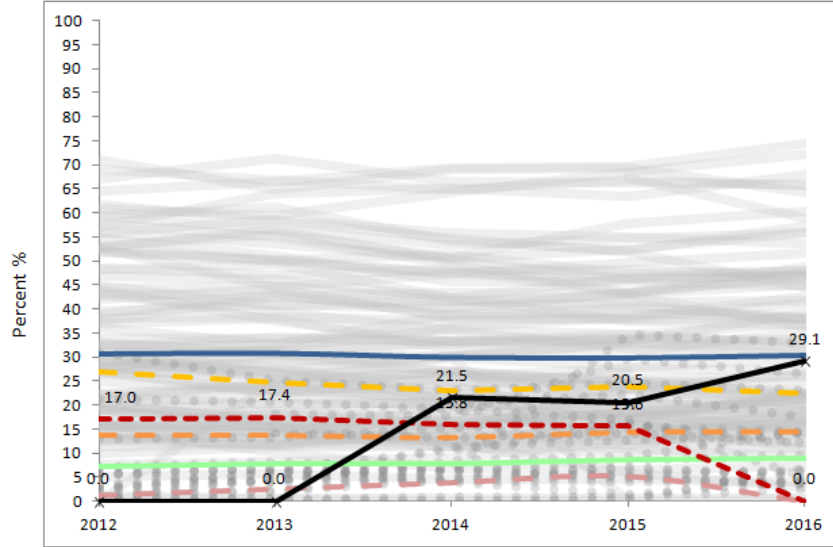


**January 2016 BESE Item - Dorchester Collegiate Academy Charter School
Attachment D – CHART Enrollment Data**

Dorchester Collegiate Academy Charter School - Boston - Est. 2009 (Max Grade Span - 04-08)

ENROLLMENT - ELL



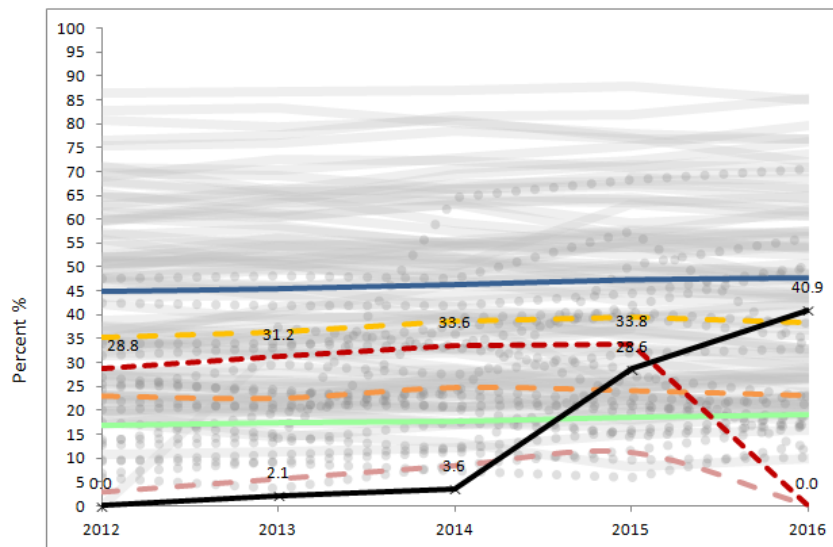
**English Language Learners
% Enrolled**

	2012	2013	2014	2015	2016
Charter School	0.0	0.0	21.5	20.5	29.1
Statewide Average	7.3	7.7	7.9	8.5	9.0
Boston (District)	30.6	30.7	29.9	29.8	30.3
Grades served per year	4-6	4-7	4-8	4-8	4-8

Median	27.0	24.7	23.1	23.8	22.5
First Quartile	13.7	13.6	13.2	14.2	14.3
Comparison Index	17.0	17.4	15.8	15.6	0.0
Gap Narrowing Target (GNT)	1.3	2.6	3.9	5.2	0.0

— Charter School — Statewide Avg — District - - - Median - - - First Quartile - - - Comparison Index - - - GNT - - - Comp. Charter Schools - - - Comp. District Schools

ENROLLMENT - FLNE



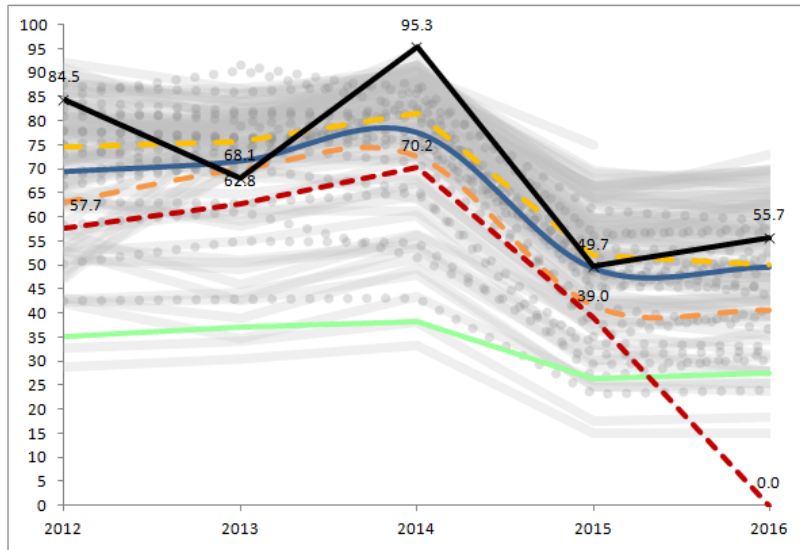
**First Language Not English
% Enrolled**

	2012	2013	2014	2015	2016
Charter School	0.0	2.1	3.6	28.6	40.9
Statewide Average	16.7	17.3	17.8	18.5	19.0
Boston (District)	44.8	45.4	46.3	47.4	47.8
Grades served per year	4-6	4-7	4-8	4-8	4-8

Median	35.3	36.4	38.7	39.6	38.3
First Quartile	23.1	22.6	24.9	24.2	23.2
Comparison Index	28.8	31.2	33.6	33.8	0.0
Gap Narrowing Target (GNT)	2.8	5.6	8.5	11.3	0.0

Dorchester Collegiate Academy Charter School - Boston - Est. 2009 (Max Grade Span - 04-08)

ENROLLMENT - Low Income

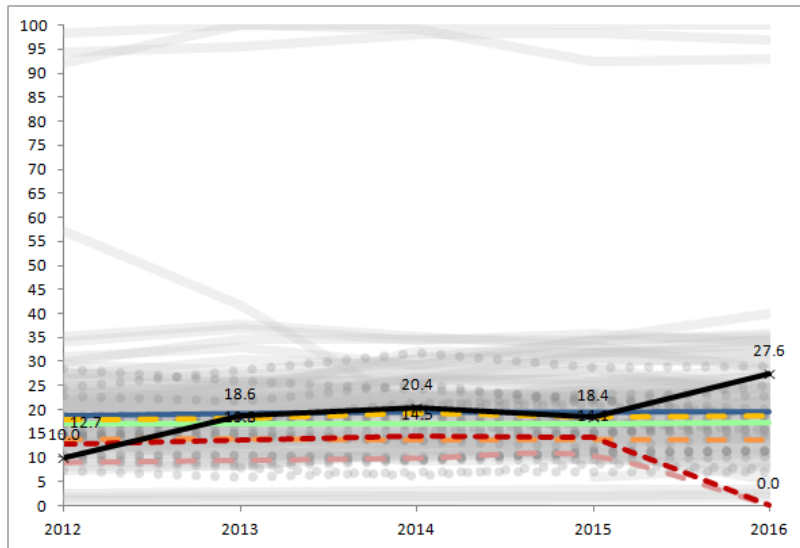


Low Income (Econ. Disadvantaged for 2015) % Enrolled

	2012	2013	2014	2015	2016
Charter School	84.5	68.1	95.3	49.7	55.7
Statewide Average	35.2	37.0	38.3	26.3	27.4
Boston (District)	69.5	71.7	77.7	49.3	49.5
Grades served per year	4-6	4-7	4-8	4-8	4-8
Median	74.5	75.8	81.6	52.0	50.0
First Quartile	63.1	70.0	72.7	41.7	40.7
Comparison Index	57.7	62.8	70.2	39.0	0.0
Gap Narrowing Target (GNT)					0.0

— Charter School
 — Statewide Avg
 — District
 - - - Median
 - - - First Quartile
 - - - Comparison Index
 - - - GNT
 - - - Comp. Charter Schools
 - - - Comp. District Schools

ENROLLMENT - Students with Disabilities



Students with Disabilities % Enrolled

	2012	2013	2014	2015	2016
Charter School	10.0	18.6	20.4	18.4	27.6
Statewide Average	17.0	17.0	17.0	17.1	17.2
Boston (District)	18.7	19.2	19.5	19.5	19.6
Grades served per year	4-6	4-7	4-8	4-8	4-8
Median	18.0	18.3	19.4	18.5	18.8
First Quartile	13.9	14.0	13.7	13.9	13.7
Comparison Index	12.7	13.8	14.5	14.1	0.0
Gap Narrowing Target (GNT)	9.1	9.5	10.0	10.4	0.0