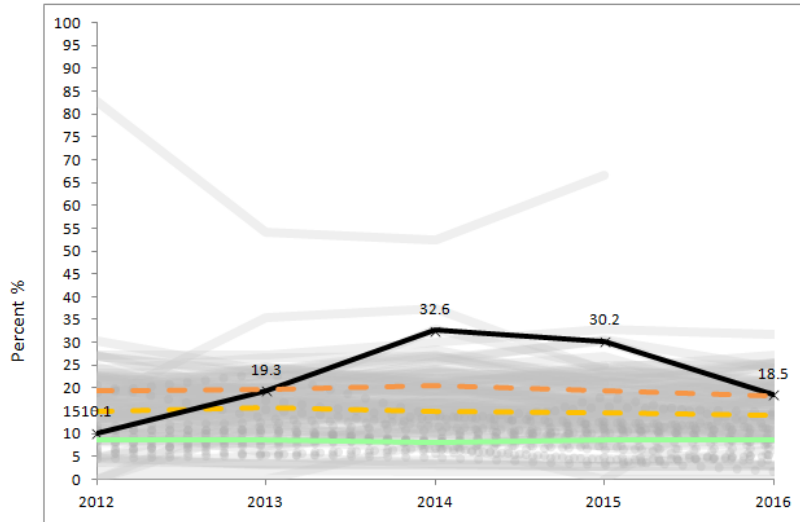


**January 2016 BESE Item - Dorchester Collegiate Academy Charter School
Attachment E – CHART Attrition Data**

Dorchester Collegiate Academy Charter School - Boston - Est. 2009 (Max Grade Span - 04-08)

ATTRITION - All Students



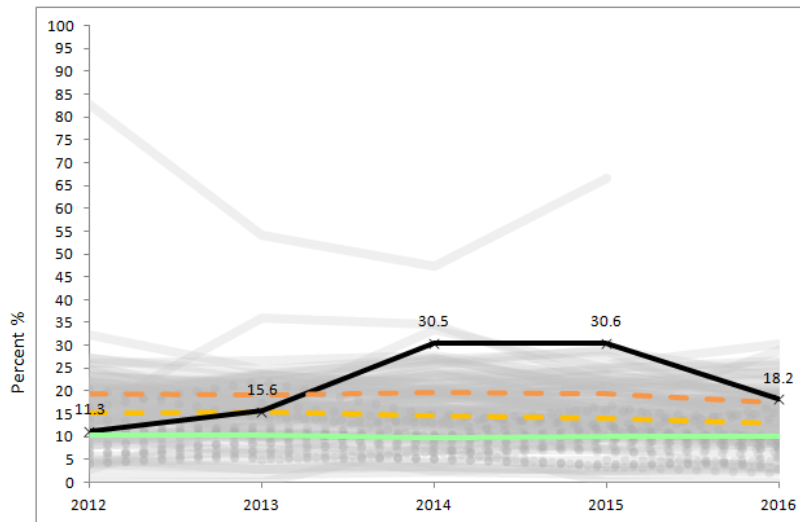
**All Students
Attrition %**

	2012	2013	2014	2015	2016
Charter School	10.1	19.3	32.6	30.2	18.5
Statewide Average	8.7	8.8	8.2	8.7	8.7
Grades served per year	4-6	4-7	4-8	4-8	4-8

	2012	2013	2014	2015	2016
Median	14.8	15.9	14.8	14.7	14.0
Third Quartile	19.5	19.7	20.5	19.3	18.4

— Charter School
 ···· Statewide Avg
 - - - - Median
 - - - - Third Quartile
 ----- Comp. Charter Schools
 ----- Comp. District Schools

ATTRITION - High Needs



**High Needs
Attrition %**

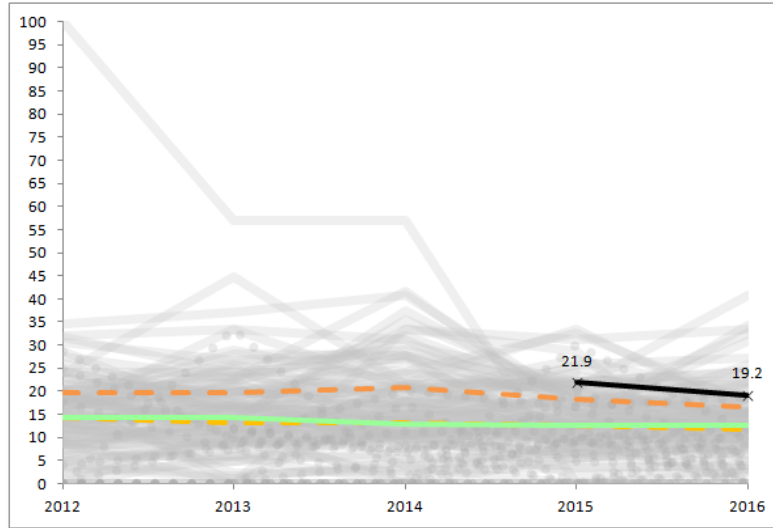
	2012	2013	2014	2015	2016
Charter School	11.3	15.6	30.5	30.6	18.2
Statewide Average	10.3	10.4	9.7	10.0	10.1
Grades served per year	4-6	4-7	4-8	4-8	4-8

	2012	2013	2014	2015	2016
Median	15.2	15.5	14.7	14.1	13.0
Third Quartile	19.5	19.1	19.8	19.5	17.4

**January 2016 BESE Item - Dorchester Collegiate Academy Charter School
Attachment E – CHART Attrition Data**

Dorchester Collegiate Academy Charter School - Boston - Est. 2009 (Max Grade Span - 04-08)

ATTRITION - All Students

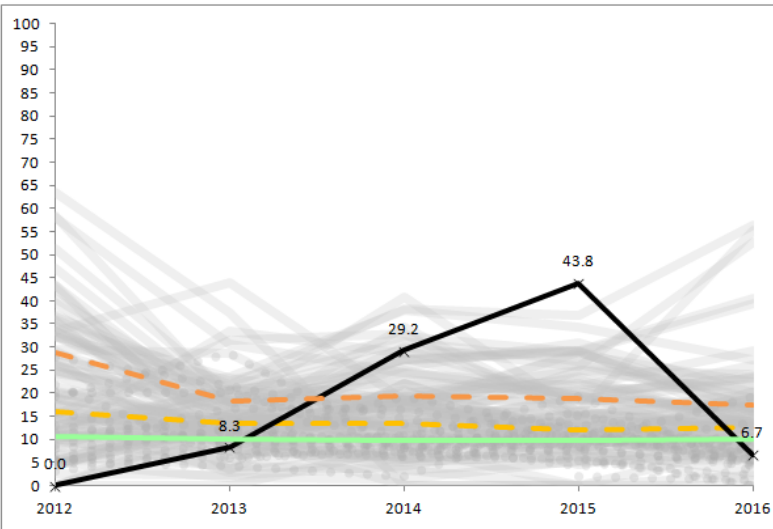


**English Language Learners
Attrition %**

	2012	2013	2014	2015	2016
Charter School				21.9	19.2
Statewide Average	14.2	14.4	12.8	12.6	12.7
Grades served per year	4-6	4-7	4-8	4-8	4-8
<hr/>					
Median	14.2	13.2	13.3	12.5	11.8
Third Quartile	19.8	19.6	20.8	18.2	16.7

— Charter School
 - - - Statewide Avg
 - - - Median
 - - - Third Quartile
 Comp. Charter Schools
 — Comp. District Schools

ATTRITION - High Needs

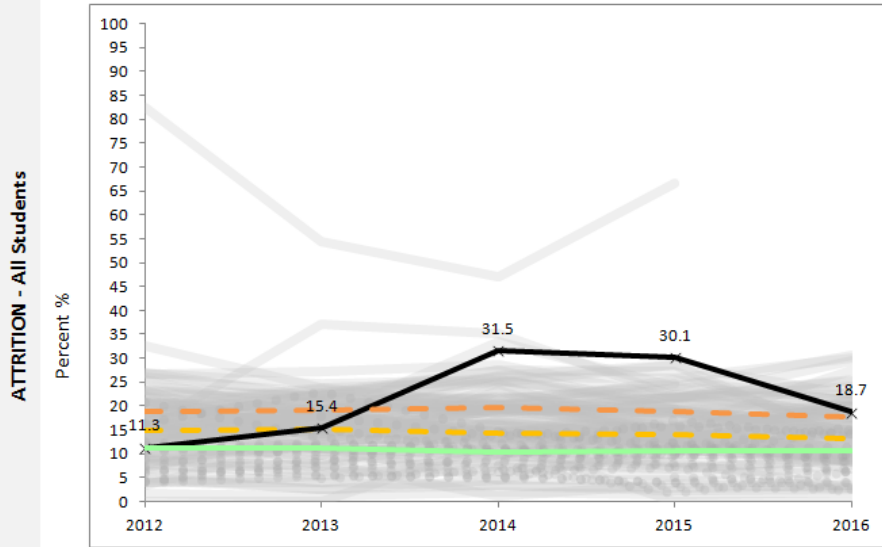


**Students with Disabilities
Attrition %**

	2012	2013	2014	2015	2016
Charter School	0.0	8.3	29.2	43.8	6.7
Statewide Average	10.5	10.1	9.7	9.8	10.2
Grades served per year	4-6	4-7	4-8	4-8	4-8
<hr/>					
Median	16.0	13.4	13.6	12.0	12.7
Third Quartile	28.9	18.2	19.3	18.8	17.4

**January 2016 BESE Item - Dorchester Collegiate Academy Charter School
Attachment E – CHART Attrition Data**

Dorchester Collegiate Academy Charter School - Boston - Est. 2009 (Max Grade Span - 04-08)



**Low Income/Economically Disadvantaged
Attrition %**

	2012	2013	2014	2015	2016
Charter School	11.3	15.4	31.5	30.1	18.7
Statewide Average	11.3	11.2	10.4	10.6	10.6
Grades served per year	4-6	4-7	4-8	4-8	4-8
Median	14.8	15.1	14.3	13.9	13.2
Third Quartile	18.8	19.2	19.6	18.8	17.7

— Charter School
 - - - Statewide Avg
 - - - Median
 - - - Third Quartile
 Comp. Charter Schools
 — Comp. District Schools

**January 2016 BESE Item - Dorchester Collegiate Academy Charter School
Attachment E – CHART Attrition Data**

Grade by Grade Attrition for 2013-2014 (students who were enrolled in June 2013 but not in fall 2013):

<u>Student Group</u>	<u>4</u>	<u>5</u>	<u>6</u>	<u>7</u>	<u>All</u>
All Students	25.7	27.3	53.1	25.0	32.6
Female	27.8	27.8	53.8	28.6	33.3
Male	23.5	26.7	52.6	22.2	31.9
High needs	15.0	21.4	53.6	27.6	30.5
Low income	0.0	24.0	56.0	29.6	31.5
Students w/disabilities	28.6			28.6	29.2
Afr. Amer./Black	34.6	32.0	52.0	20.0	35.4
Asian					
Hispanic/Latino		16.7		36.4	25.0

Grade by Grade Attrition for 2014-2015 (students who were enrolled in June 2014 but not in fall 2014):

<u>Student Group</u>	<u>4</u>	<u>5</u>	<u>6</u>	<u>7</u>	<u>All</u>
All Students	33.3	38.9	31.4	17.9	30.2
Female	26.7	44.4	31.6	18.2	29.7
Male	37.5	33.3	31.3	17.6	30.7
High needs	33.3	37.1	33.3	18.9	30.6
ELL	15.4	30.0		28.6	21.9
Low income	33.3	37.1	31.3	18.9	30.1
Students w/disabilities	80.0	28.6	28.6	25.0	43.8
Afr. Amer./Black	35.5	33.3	34.6	14.8	29.5
Asian					
Hispanic/Latino	16.7	45.5	16.7	28.6	30.0

**January 2016 BESE Item - Dorchester Collegiate Academy Charter School
Attachment E – CHART Attrition Data**

Grade by Grade Attrition for 2015-2016 (students who were enrolled in June 2015 but not in fall 2015)

Student Group	4	5	6	7	All
All Students	12.5	22.5	10.7	26.3	18.5
Female	0	20	10	21.1	13.3
Male	20.8	24	11.1	31.6	22.1
High needs	15.2	22.6	10	23.1	18.2
Economically Disadvantaged	18.5	27.8	0	18.2	18.7
ELL	28.6	12.5		33.3	19.2
Students w/disabilities	11.1		0	8.3	6.7
Afr. Amer./Black	15.4	20	5.3	30	19
Asian					
Hispanic/Latino	7.7	22.2	14.3	16.7	14.3

Additional Information:

Please note that the subgroup data in this attachment are based on Oct. 1 certified SIMS data.