

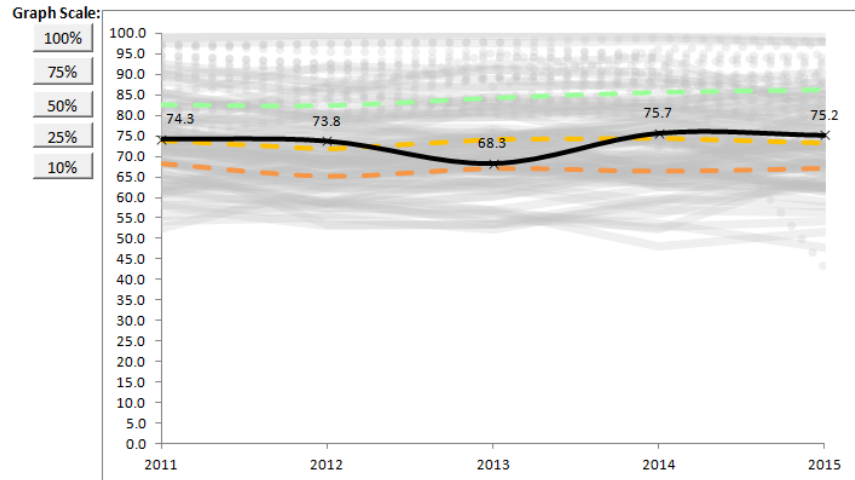
**January 2016 BESE Item - Dorchester Collegiate Academy Charter School
Attachment F - Academic Performance Comparison to Other Boston schools**

MCAS – CPI, English Language Arts, All Students

MCAS - CPI

Dorchester Collegiate Academy Charter School - Boston - Est. 2009 (Max Grade Span - 04-6)	
All	
CPI	
English Language Arts	
All Students	

School Name	2011	2012	2013	2014	2015
Dorchester Collegiate Academy Charter School - Boston	74.3	73.8	68.3	75.7	75.2
Statewide Average	82.7	82.5	84.3	85.6	86.2
Median	74.0	71.7	74.2	74.5	73.3
First Quartile	68.3	65.4	67.1	66.5	67.2
Grades served per year	4-5	4-6	4-7	4-8	4-8

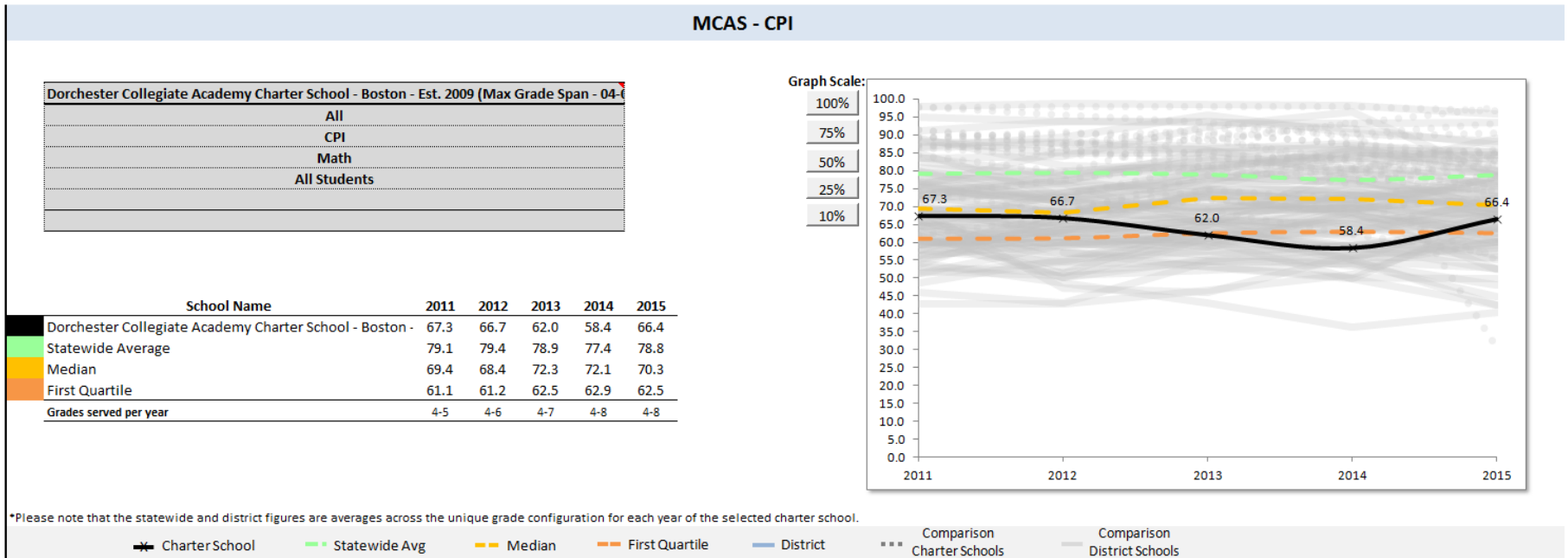


*Please note that the statewide and district figures are averages across the unique grade configuration for each year of the selected charter school.

✕ Charter School
 - - - Statewide Avg
 - - - Median
 - - - First Quartile
 — District
 ■ ■ ■ Comparison Charter Schools
 — Comparison District Schools

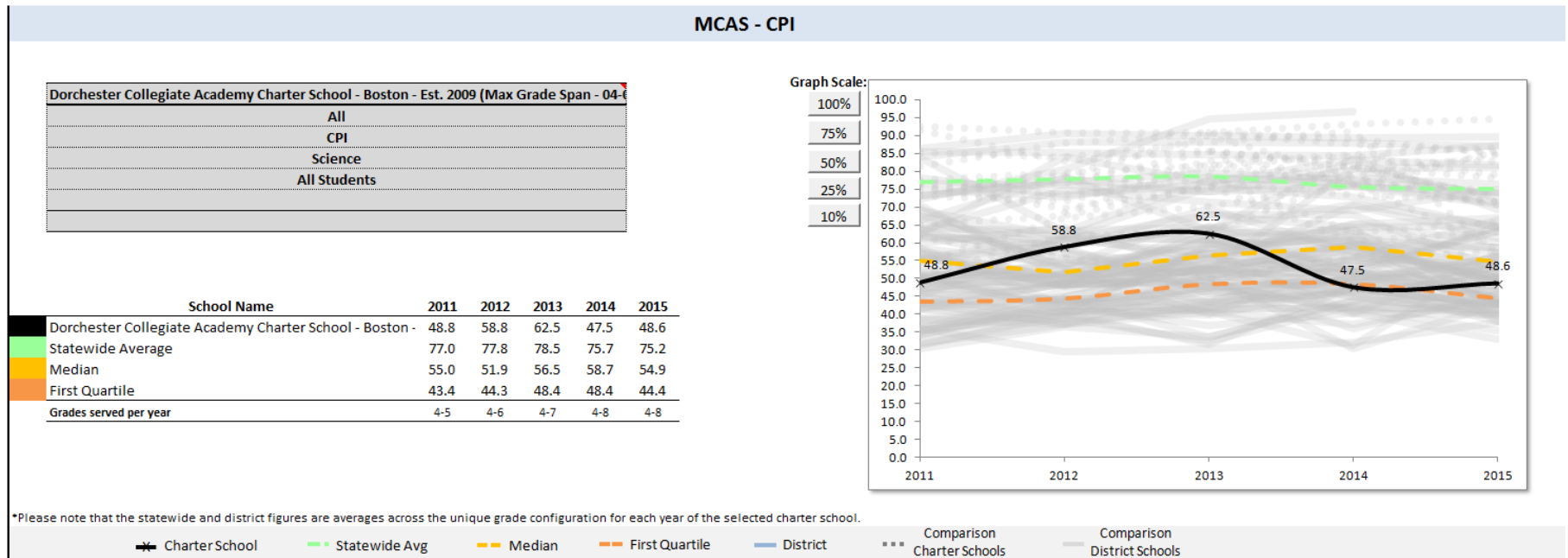
**January 2016 BESE Item - Dorchester Collegiate Academy Charter School
Attachment F - Academic Performance Comparison to Other Boston schools**

MCAS – CPI, Math, All Students



**January 2016 BESE Item - Dorchester Collegiate Academy Charter School
Attachment F - Academic Performance Comparison to Other Boston schools**

MCAS – CPI, Science, All Students



**January 2016 BESE Item - Dorchester Collegiate Academy Charter School
Attachment F - Academic Performance Comparison to Other Boston schools**

School Percentile Rank within same School Type (Elementary-Middle School)

All Boston Schools (Gray indicates Charter Schools)

SCHOOL	School Percentile (1-99)
Brooke Charter School Roslindale - Brooke Charter School Roslindale	97
Brooke Charter School Mattapan - Brooke Charter School Mattapan	93
Neighborhood House Charter - Neighborhood House Charter School	78
Boston - Lyon K-8	76
Boston - Warren-Prescott	69
Boston - Eliot Elementary	68
Boston - Richard J Murphy	64
Conservatory Lab Charter (District) - Conservatory Lab Charter School	62
Boston - Joyce Kilmer	62
Boston - Rafael Hernandez	51
Boston - Joseph J Hurley	48
Boston - Franklin D Roosevelt	45
Boston - Joseph Lee	42
Boston - Lyndon	40
Boston - William H Ohrenberger	28
Boston - Curley K-8 School	26
Boston - Orchard Gardens	25
Boston - Dennis C Haley	24
Dorchester Collegiate Academy Charter - Dorchester Collegiate Academy Charter	23
Boston - Oliver Hazard Perry	22
Boston - Edison K-8	21
Boston - Boston Teachers Union School	20
Boston - Gardner Pilot Academy	19
Boston - Young Achievers	17
Boston - Jackson Mann	17
Boston - Mario Umana Academy	16
Boston - Mildred Avenue K-8	14
Boston - Donald Mckay	13
Boston - Higginson/Lewis K-8	11
Boston - Sarah Greenwood	9
Boston - Mission Hill School	5
Boston - King K-8	4
Boston - Maurice J Tobin	3

**January 2016 BESE Item - Dorchester Collegiate Academy Charter School
Attachment F - Academic Performance Comparison to Other Boston schools**

PPI – All Students Rank within same School Type (Elementary-Middle School)

All Boston Schools (Gray indicates Charter Schools)

SCHOOL	Cumulative Progress and Performance Index	
	All Students	High Needs Students
Brooke Charter School Roslindale - Brooke Charter School Roslindale	100	100
Brooke Charter School Mattapan - Brooke Charter School Mattapan	100	100
Boston - Mildred Avenue K-8	83	83
Neighborhood House Charter - Neighborhood House Charter School	76	69
Boston - Joseph J Hurley	75	87
Boston - Joseph Lee	71	84
Boston - Richard J Murphy	71	71
Boston - Lyon K-8	69	73
Boston - Oliver Hazard Perry	68	59
Boston - Dennis C Haley	67	75
Boston - Higginson/Lewis K-8	67	68
Boston - Young Achievers	66	75
Dorchester Collegiate Academy Charter - Dorchester Collegiate Academy Charter	63	58
Boston - Rafael Hernandez	61	56
Boston - Franklin D Roosevelt	61	53
Boston - Warren-Prescott	60	73
Boston - Curley K-8 School	60	52
Boston - Edison K-8	59	52
Boston - Donald Mckay	54	72
Conservatory Lab Charter (District) - Conservatory Lab Charter School	54	53
Boston - Gardner Pilot Academy	53	56
Boston - Orchard Gardens	52	60
Boston - Mario Umana Academy	51	83
Boston - Maurice J Tobin	51	50
Boston - Boston Teachers Union School	48	76
Boston - Lyndon	48	69
Boston - Jackson Mann	45	69
Boston - Joyce Kilmer	44	36
Boston - Sarah Greenwood	41	58
Boston - William H Ohrenberger	41	52
Boston - King K-8	39	60
Boston - Eliot Elementary	37	100
Boston - Mission Hill School	33	38

**January 2016 BESE Item - Dorchester Collegiate Academy Charter School
Attachment F - Academic Performance Comparison to Other Boston schools**

PPI – High Needs Rank within same School Type (Elementary-Middle School)

All Boston Schools (Gray indicates Charter Schools)

SCHOOL	Cumulative Progress and Performance Index	
	All Students	High Needs Students
Brooke Charter School Roslindale - Brooke Charter School Roslindale	100	100
Brooke Charter School Mattapan - Brooke Charter School Mattapan	100	100
Boston - Eliot Elementary	37	100
Boston - Joseph J Hurley	75	87
Boston - Joseph Lee	71	84
Boston - Mildred Avenue K-8	83	83
Boston - Mario Umana Academy	51	83
Boston - Boston Teachers Union School	48	76
Boston - Dennis C Haley	67	75
Boston - Young Achievers	66	75
Boston - Lyon K-8	69	73
Boston - Warren-Prescott	60	73
Boston - Donald Mckay	54	72
Boston - Richard J Murphy	71	71
Neighborhood House Charter - Neighborhood House Charter School	76	69
Boston - Lyndon	48	69
Boston - Jackson Mann	45	69
Boston - Higginson/Lewis K-8	67	68
Boston - Orchard Gardens	52	60
Boston - King K-8	39	60
Boston - Oliver Hazard Perry	68	59
Dorchester Collegiate Academy Charter - Dorchester Collegiate Academy Charter	63	58
Boston - Sarah Greenwood	41	58
Boston - Rafael Hernandez	61	56
Boston - Gardner Pilot Academy	53	56
Boston - Franklin D Roosevelt	61	53
Conservatory Lab Charter (District) - Conservatory Lab Charter School	54	53
Boston - Curley K-8 School	60	52
Boston - Edison K-8	59	52
Boston - William H Ohrenberger	41	52
Boston - Maurice J Tobin	51	50
Boston - Mission Hill School	33	38
Boston - Joyce Kilmer	44	36