

Proven Provider Analysis Summary

Proven Provider Context:

Charter school boards of trustees must be granted Proven Provider status when requesting to increase the maximum enrollment of an existing Commonwealth charter school **if** the sending region includes district(s) that have performed in the lowest 10 percent statewide for two consecutive previous years on the MCAS **and** where the 9 percent net school spending cap *has been, or would be exceeded* .

In order to determine if a current board of trustees qualifies for Proven Provider status, the Commissioner will consider affirmative, credible evidence of the existing school's success in each of the three accountability areas: academic program success, organizational viability, and faithfulness to the terms of its charter. Pursuant to 603 CMR 1.04(4)(b), applicants for Proven Provider status must demonstrate success in student academic performance and evidence of overall academic program success, including, but not limited to:

- proficiency levels and growth measures on the MCAS or equivalent assessments for all students and for one or more targeted subgroups as defined in M.G.L. c. 71, § 89(i)(3), which are similar to statewide averages in English Language Arts and mathematics for all students in Massachusetts in comparable grades, over no less than a three-year period for cohorts of students; and
- attendance, retention, attrition, in-school suspension rates, out-of-school suspension rates, and if applicable, graduation and dropout data.

Proven Provider Analysis Graphs:

The graphs of student achievement data provide comparison performance percentages for all students and three different subgroups of students: low income, students with disabilities, and English language learners. Each line on the graph represents the student proficiency levels and growth measures levels on the MCAS English Language Arts and mathematics tests for a given school or set of schools during the most recent five years. The state and district averages in the following graphs do not represent the overall average of the state or relevant district. The Department calculates state and district averages for comparable grades by identifying and averaging the specific grades implemented by the charter school of interest during each relevant year. If available, data listed is displayed longitudinally across multiple years in line graph form, with:

- a solid **bold black** line representing the charter school of interest;
- a dotted **green** line for the statewide average for comparable grades ;
- dotted **blue** lines for the comparison district averages for comparable grades;
- a dotted **orange** line for the median performance percentage of all comparison schools ;
- a dotted **dark orange** line for the first quartile performance percentage of all comparison schools; and
- solid **gray** lines for enrollment percentage in each individual comparison school (darker gray for charter schools, and lighter gray for district schools).

For schools participating in PARCC in 2015, the percent of students who met or exceeded expectations (Level 4 and 5) are provided for all students and three different subgroups economically disadvantaged , students with disabilities, and English language learners. The state and district results provided only include schools in the following school type categories based on the grades served in the most recent year: Elementary School (ES), usually serving grades K-5 or K-6; Elementary-Middle School (ESMS), usually serving grades K-8; and Middle School (MS), usually serving grades 6-8 or 7-8.

The graphs of student indicator data summarize the in-school suspension rates, out-of-school suspension rates, attendance, retention, and if applicable, 4-year graduation and dropout data for all students during the most recent five years of published data.

Definitions:

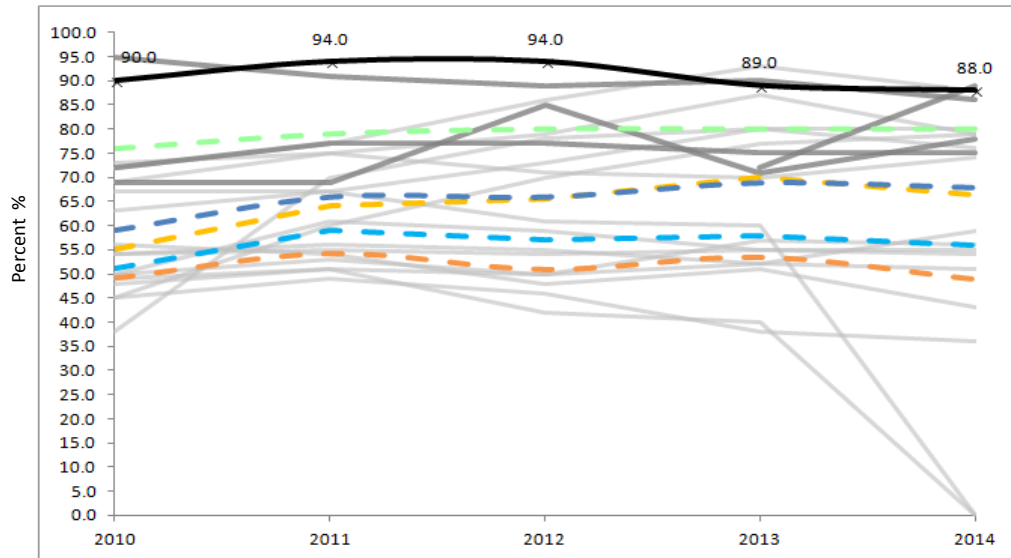
- Comparable grades refers to the grades served by the charter school during each year under review.
 - The median is the midpoint value of all comparison schools. This is derived using Microsoft Excel's MEDIAN function.
 - The set of displayed comparison schools includes the charter school of interest, and all of the public schools in the charter school's region that serve at least one grade level of students which overlaps with the grade levels served by the charter school.
 - The first quartile is the middle number between the smallest number and the median of all comparison schools. This is derived using Microsoft Excel's QUARTILE function.
 - 2014-2015 is the first year for which the category "Economically Disadvantaged" is being reported, replacing the "Low-income," "Free Lunch" and "Reduced Lunch" categories used in 2013-2014 and earlier.
- It is important for users of this data to understand that enrollment percentages and achievement data for "economically disadvantaged" students cannot be directly compared to "Low-income" data in prior years. Please see <http://www.doe.mass.edu/infoservices/data/ed.html> for important information about the new "Economically Disadvantaged" category.

603 CMR 1.04(4)(b) can be found at: <http://www.doe.mass.edu/lawsregs/603cmr1.html?section=04>.

M.G.L. c. 71, § 89(i)(3) can be found at: <https://malegislature.gov/Laws/GeneralLaws/PartI/TitleXII/Chapter71/Section89>

Pioneer Charter School of Science - Everett - Est. 2007 (Max Grade Span - 07-12)

MCAS - ELA - All



MCAS - English Language Arts % Proficient/Advanced All Students

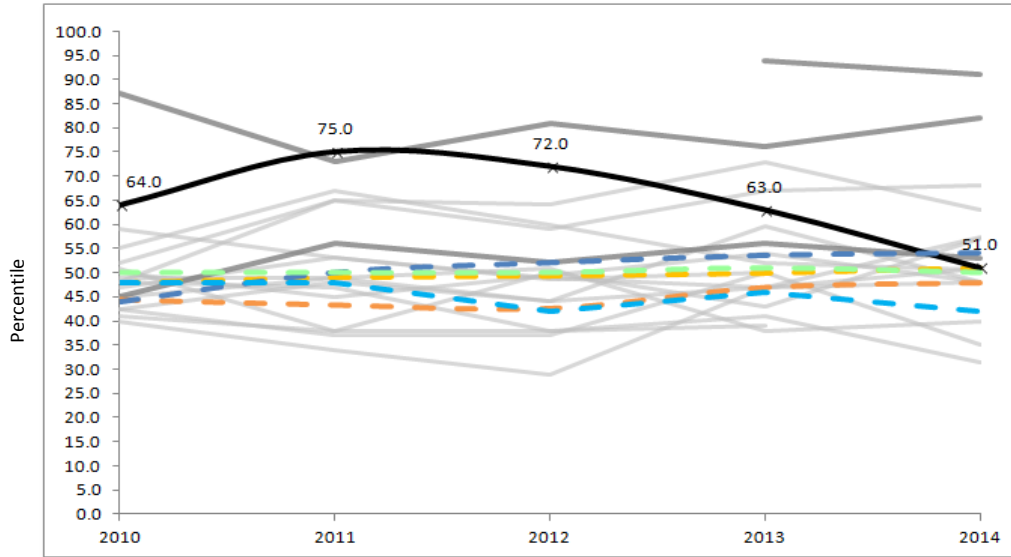
	2010	2011	2012	2013	2014
Charter School	90.0	94.0	94.0	89.0	88.0
Statewide Average*	76.0	79.0	80.0	80.0	80.0
Everett (District)*	59.0	66.0	66.0	69.0	68.0
Chelsea (District)*	51.0	59.0	57.0	58.0	56.0
Grades served per year	7-10	7-11	7-12	7-12	7-12

Median	55.0	64.0	65.5	70.0	66.5
First Quartile	49.3	54.3	51.0	53.5	49.0

*Please note that the statewide and district figures are averages across the unique grade configuration for each year of the selected charter school.

— Charter School
 - - - Statewide Avg
 - - - District
 - - - Median
 - - - First Quartile
 — Comp. Charter Schools
 — Comp. District Schools

MCAS - ELA SGP - All



MCAS - English Language Arts Student Growth Percentile (SGP) All Students

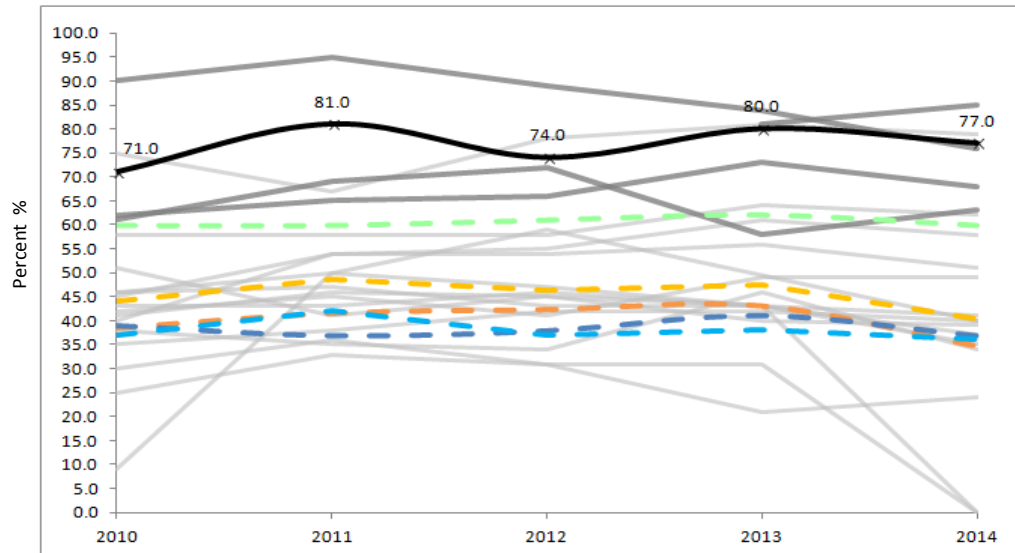
	2010	2011	2012	2013	2014
Charter School	64.0	75.0	72.0	63.0	51.0
Statewide Average*	50.0	50.0	50.0	51.0	50.0
Everett (District)*	44.0	50.0	52.0	53.5	54.0
Chelsea (District)*	48.0	48.0	42.0	46.0	42.0
Grades served per year	7-10	7-11	7-12	7-12	7-12

Median	48.0	49.0	49.3	50.0	51.0
First Quartile	44.4	43.3	42.5	47.0	48.0

*Please note that the statewide and district figures are averages across the unique grade configuration for each year of the selected charter school.

Pioneer Charter School of Science - Everett - Est. 2007 (Max Grade Span - 07-12)

MCAS - Math %P/A - All



MCAS - Math % Proficient/Advanced All Students

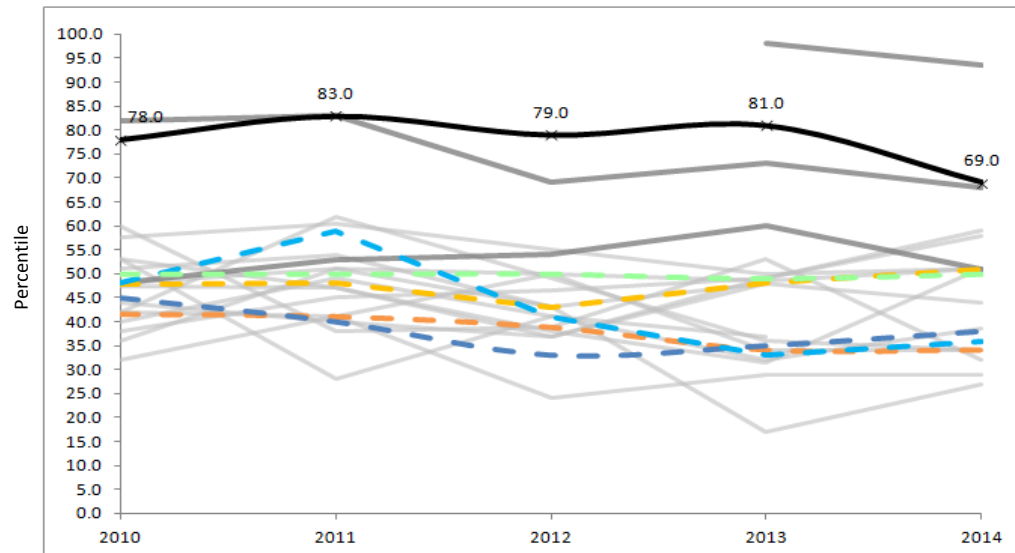
	2010	2011	2012	2013	2014
Charter School	71.0	81.0	74.0	80.0	77.0
Statewide Average*	60.0	60.0	61.0	62.0	60.0
Everett (District)*	39.0	37.0	38.0	41.0	37.0
Chelsea (District)*	37.0	42.0	37.0	38.0	36.0
Grades served per year	7-10	7-11	7-12	7-12	7-12

Median	44.0	48.5	46.5	47.5	40.5
First Quartile	38.5	41.5	42.3	43.0	34.8

*Please note that the statewide and district figures are averages across the unique grade configuration for each year of the selected charter school.

— Charter School
 - - - Statewide Avg
 - - - District
 - - - Median
 - - - First Quartile
 — Comp. Charter Schools
 — Comp. District Schools

MCAS - Math SGP - All



MCAS - Math Student Growth Percentile (SGP) All Students

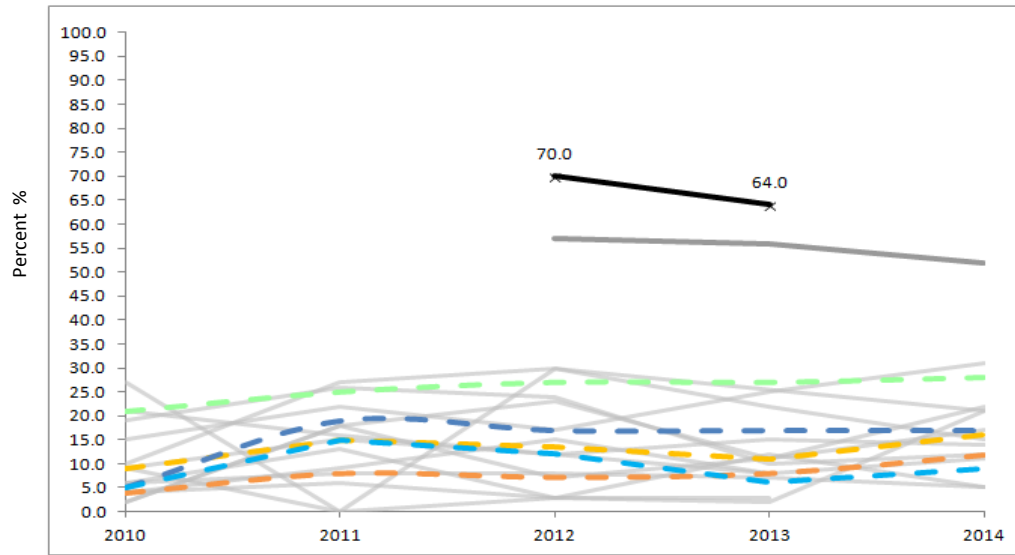
	2010	2011	2012	2013	2014
Charter School	78.0	83.0	79.0	81.0	69.0
Statewide Average*	50.0	50.0	50.0	49.0	50.0
Everett (District)*	45.0	40.0	33.0	35.0	38.0
Chelsea (District)*	48.0	59.0	41.0	33.0	36.0
Grades served per year	7-10	7-11	7-12	7-12	7-12

Median	47.8	48.0	43.0	48.0	51.0
First Quartile	41.5	41.0	38.8	34.0	34.0

*Please note that the statewide and district figures are averages across the unique grade configuration for each year of the selected charter school.

Pioneer Charter School of Science - Everett - Est. 2007 (Max Grade Span - 07-12)

MCAS - ELA %P/A - ELL



MCAS - English Language Arts % Proficient/Advanced English Language Learners

	2010	2011	2012	2013	2014
Charter School			70.0	64.0	
Statewide Average*	21.0	25.0	27.0	27.0	28.0
Everett (District)*	5.0	19.0	17.0	17.0	17.0
Chelsea (District)*	5.0	15.0	12.0	6.0	9.0
Grades served per year	7-10	7-11	7-12	7-12	7-12

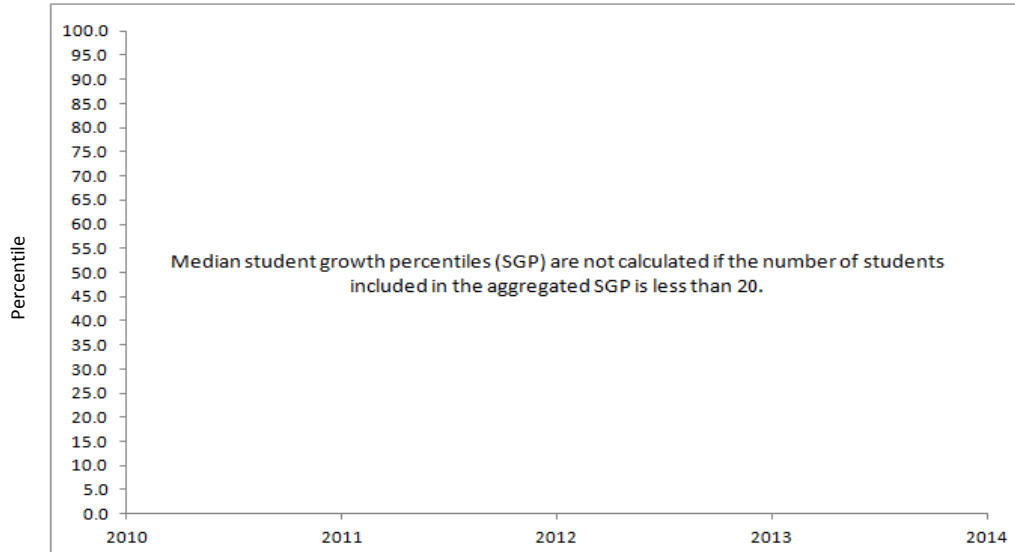
Median	9.0	15.0	13.5	11.0	16.0
First Quartile	4.0	8.0	7.3	8.0	11.8

Cells highlighted red: Achievement level percentages are not calculated for groups with fewer than 10 students.

*Please note that the statewide and district figures are averages across the unique grade configuration for each year of the selected charter school.

— Charter School
 - - - Statewide Avg
 - - - District
 - - - Median
 - - - First Quartile
 — Comp. Charter Schools
 — Comp. District Schools

MCAS - ELA SGP - ELL



MCAS - English Language Arts Student Growth Percentile (SGP) English Language Learners

	2010	2011	2012	2013	2014
Charter School					
Statewide Average*	53.0	52.0	53.0	54.0	54.0
Everett (District)*	52.0	51.0	52.0	36.0	61.5
Chelsea (District)*	51.0	73.0	55.5	43.5	40.0
Grades served per year	7-10	7-11	7-12	7-12	7-12

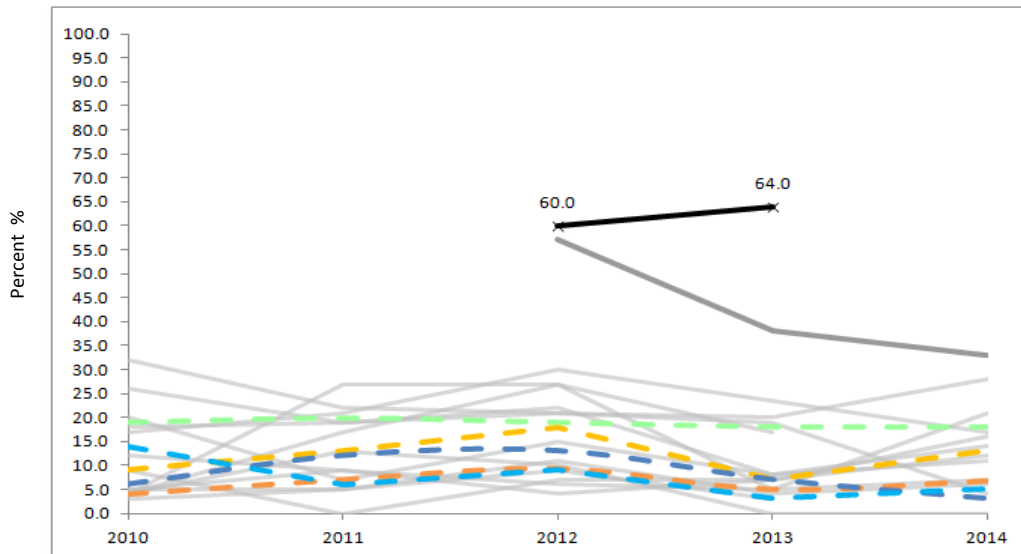
Median	50.8	56.0	47.8	46.3	64.0
First Quartile	46.5	45.5	41.6	39.3	63.0

Cells highlighted red: Median student growth percentiles (SGP) are not calculated if the number of students included in the aggregated SGP is less than 20.

*Please note that the statewide and district figures are averages across the unique grade configuration for each year of the selected charter school.

Pioneer Charter School of Science - Everett - Est. 2007 (Max Grade Span - 07-12)

MCAS - Math %P/A - ELL



MCAS - Math % Proficient/Advanced English Language Learners

	2010	2011	2012	2013	2014
Charter School			60.0	64.0	
Statewide Average*	19.0	20.0	19.0	18.0	18.0
Everett (District)*	6.0	12.0	13.0	7.0	3.0
Chelsea (District)*	14.0	6.0	9.0	3.0	5.0
Grades served per year	7-10	7-11	7-12	7-12	7-12

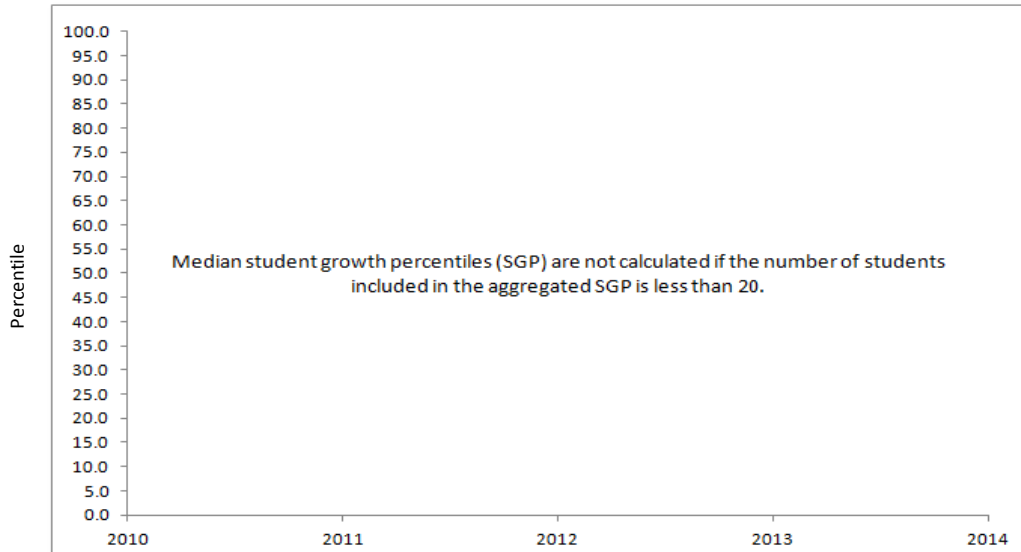
Median	9.0	13.0	18.0	7.0	13.0
First Quartile	4.0	7.0	9.3	5.0	6.8

Cells highlighted red: Achievement level percentages are not calculated for groups with fewer than 10 students.

*Please note that the statewide and district figures are averages across the unique grade configuration for each year of the selected charter school.

— Charter School
 - - - Statewide Avg
 - - - District
 - - - Median
 - - - First Quartile
 — Comp. Charter Schools
 — Comp. District Schools

MCAS - Math SGP - ELL



MCAS - Math Student Growth Percentile (SGP) English Language Learners

	2010	2011	2012	2013	2014
Charter School					
Statewide Average*	56.0	56.0	55.0	47.0	53.0
Everett (District)*	36.0	58.0	52.5	31.5	40.0
Chelsea (District)*	70.0	79.0	58.0	47.0	42.0
Grades served per year	7-10	7-11	7-12	7-12	7-12

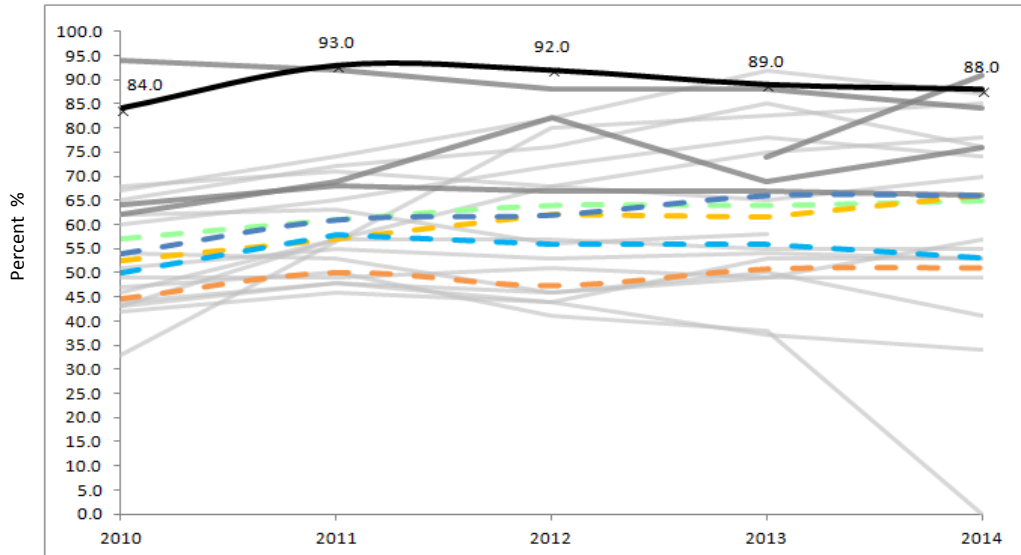
Median	45.3	54.0	49.0	34.3	42.3
First Quartile	37.9	41.3	39.5	28.8	39.6

Cells highlighted red: Median student growth percentiles (SGP) are not calculated if the number of students included in the aggregated SGP is less than 20.

*Please note that the statewide and district figures are averages across the unique grade configuration for each year of the selected charter school.

Pioneer Charter School of Science - Everett - Est. 2007 (Max Grade Span - 07-12)

MCAS - ELA %P/A - Low Inc



MCAS - English Language Arts % Proficient/Advanced Low Income

	2010	2011	2012	2013	2014
Charter School	84.0	93.0	92.0	89.0	88.0
Statewide Average*	57.0	61.0	64.0	64.0	65.0
Everett (District)*	54.0	61.0	62.0	66.0	66.0
Chelsea (District)*	50.0	58.0	56.0	56.0	53.0
Grades served per year	7-10	7-11	7-12	7-12	7-12

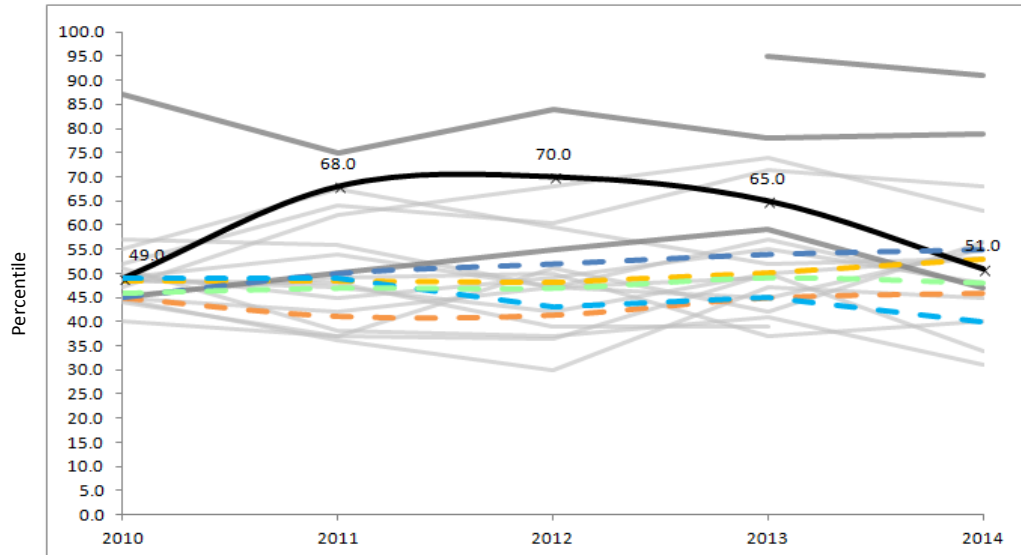
Median	52.5	57.0	62.0	61.5	66.0
First Quartile	44.5	50.0	47.3	50.8	51.0

Cells highlighted red: Achievement level percentages are not calculated for groups with fewer than 10 students.

*Please note that the statewide and district figures are averages across the unique grade configuration for each year of the selected charter school.

— Charter School
 - - - Statewide Avg
 - - - District
 - - - Median
 - - - First Quartile
 — Comp. Charter Schools
 — Comp. District Schools

MCAS - ELA SGP - Low Inc



MCAS - English Language Arts Student Growth Percentile (SGP) Low Income

	2010	2011	2012	2013	2014
Charter School	49.0	68.0	70.0	65.0	51.0
Statewide Average*	46.0	47.0	47.0	49.0	48.0
Everett (District)*	45.0	50.0	52.0	54.0	55.0
Chelsea (District)*	49.0	49.0	43.0	45.0	40.0
Grades served per year	7-10	7-11	7-12	7-12	7-12

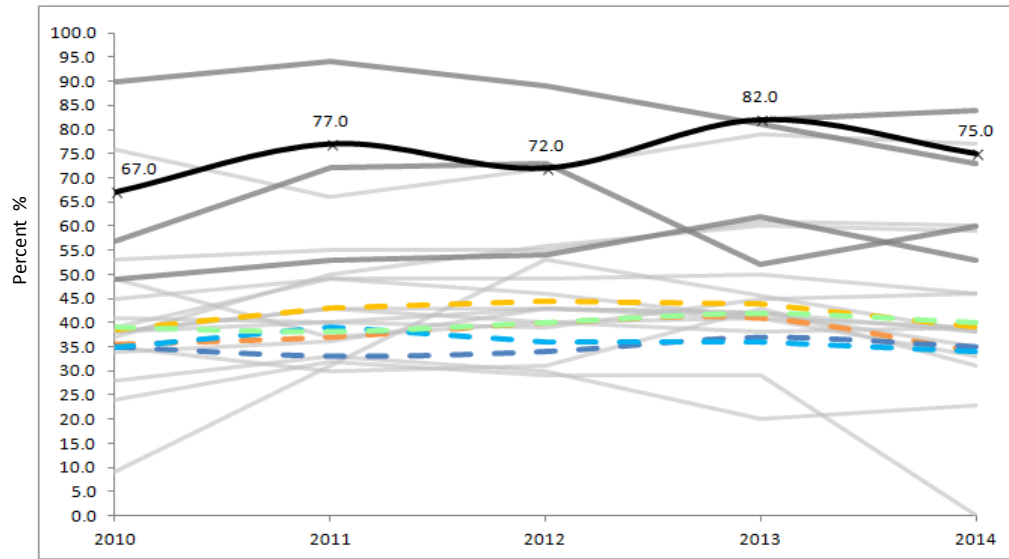
Median	48.5	48.5	48.0	50.0	53.0
First Quartile	45.0	41.0	41.3	45.0	46.0

Cells highlighted red: Median student growth percentiles (SGP) are not calculated if the number of students included in the aggregated SGP is less than 20.

*Please note that the statewide and district figures are averages across the unique grade configuration for each year of the selected charter school.

Pioneer Charter School of Science - Everett - Est. 2007 (Max Grade Span - 07-12)

MCAS - Math %P/A - Low Inc



MCAS - Math % Proficient/Advanced Low Income

	2010	2011	2012	2013	2014
Charter School	67.0	77.0	72.0	82.0	75.0
Statewide Average*	39.0	38.0	40.0	42.0	40.0
Everett (District)*	35.0	33.0	34.0	37.0	35.0
Chelsea (District)*	35.0	39.0	36.0	36.0	34.0
Grades served per year	7-10	7-11	7-12	7-12	7-12

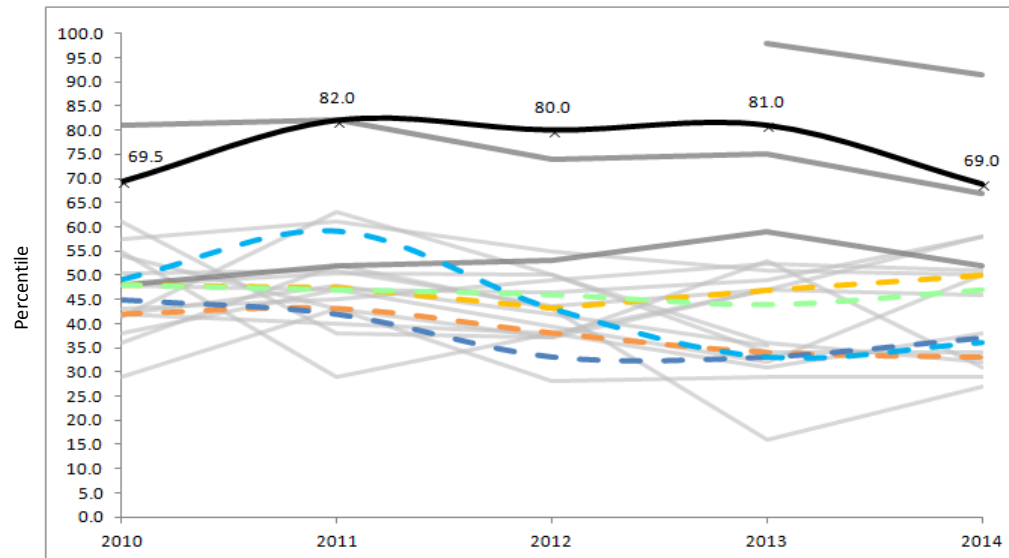
Median	38.5	43.0	44.5	44.0	39.0
First Quartile	35.5	37.0	40.0	41.0	34.0

Cells highlighted red: Achievement level percentages are not calculated for groups with fewer than 10 students.

*Please note that the statewide and district figures are averages across the unique grade configuration for each year of the selected charter school.

— Charter School
 - - - Statewide Avg
 - - - District
 - - - Median
 - - - First Quartile
 — Comp. Charter Schools
 — Comp. District Schools

MCAS - Math SGP - Low Inc



MCAS - Math Student Growth Percentile (SGP) Low Income

	2010	2011	2012	2013	2014
Charter School	69.5	82.0	80.0	81.0	69.0
Statewide Average*	48.0	47.0	46.0	44.0	47.0
Everett (District)*	45.0	42.0	33.0	33.0	37.0
Chelsea (District)*	49.0	59.0	43.0	33.0	36.0
Grades served per year	7-10	7-11	7-12	7-12	7-12

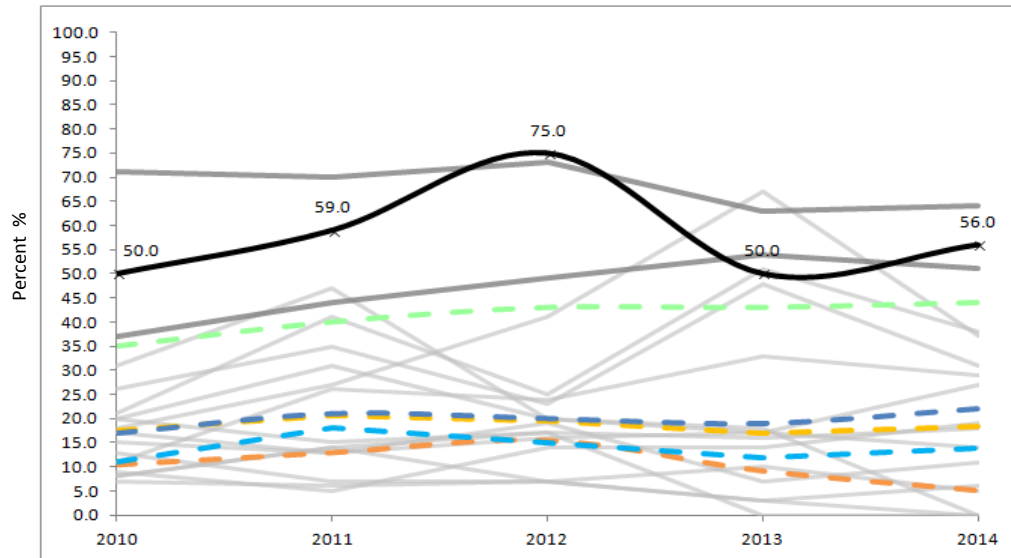
Median	48.0	47.5	43.3	47.0	50.0
First Quartile	41.9	43.0	38.0	34.0	33.0

Cells highlighted red: Median student growth percentiles (SGP) are not calculated if the number of students included in the aggregated SGP is less than 20.

*Please note that the statewide and district figures are averages across the unique grade configuration for each year of the selected charter school.

Pioneer Charter School of Science - Everett - Est. 2007 (Max Grade Span - 07-12)

MCAS - ELA %P/A - SWD



MCAS - English Language Arts % Proficient/Advanced Students with Disabilities

	2010	2011	2012	2013	2014
Charter School	50.0	59.0	75.0	50.0	56.0
Statewide Average*	35.0	40.0	43.0	43.0	44.0
Everett (District)*	17.0	21.0	20.0	19.0	22.0
Chelsea (District)*	11.0	18.0	15.0	12.0	14.0
Grades served per year	7-10	7-11	7-12	7-12	7-12

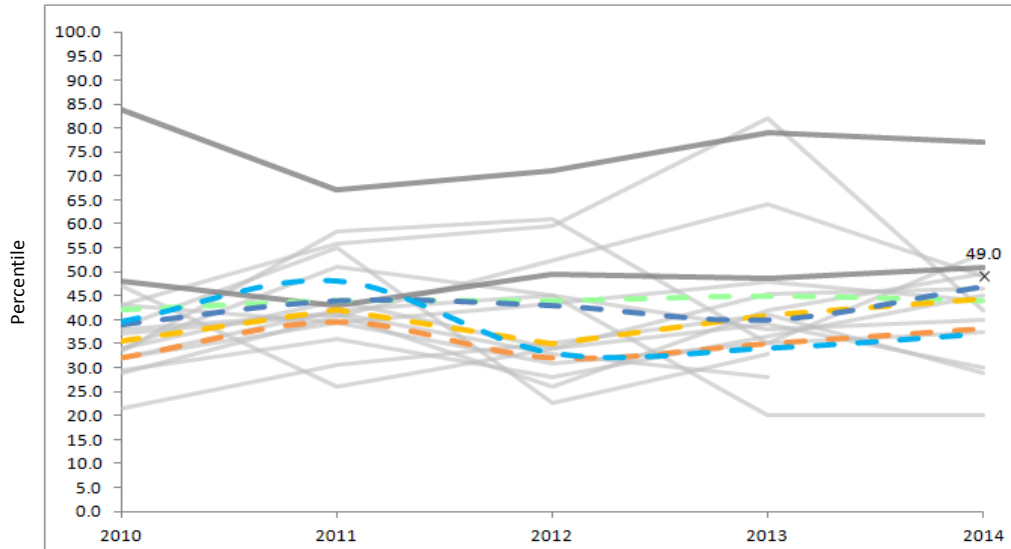
Median	17.5	20.5	19.5	17.0	18.5
First Quartile	10.5	13.0	15.5	9.3	5.3

Cells highlighted red: Achievement level percentages are not calculated for groups with fewer than 10 students.

*Please note that the statewide and district figures are averages across the unique grade configuration for each year of the selected charter school.

— Charter School
- - Statewide Avg
- - District
- - Median
- - First Quartile
— Comp. Charter Schools
— Comp. District Schools

MCAS - ELA SGP - SWD



MCAS - English Language Arts Student Growth Percentile (SGP) Students with Disabilities

	2010	2011	2012	2013	2014
Charter School					49.0
Statewide Average*	42.0	44.0	44.0	45.0	44.0
Everett (District)*	39.0	44.0	43.0	40.0	47.0
Chelsea (District)*	39.5	48.0	33.0	34.0	37.0
Grades served per year	7-10	7-11	7-12	7-12	7-12

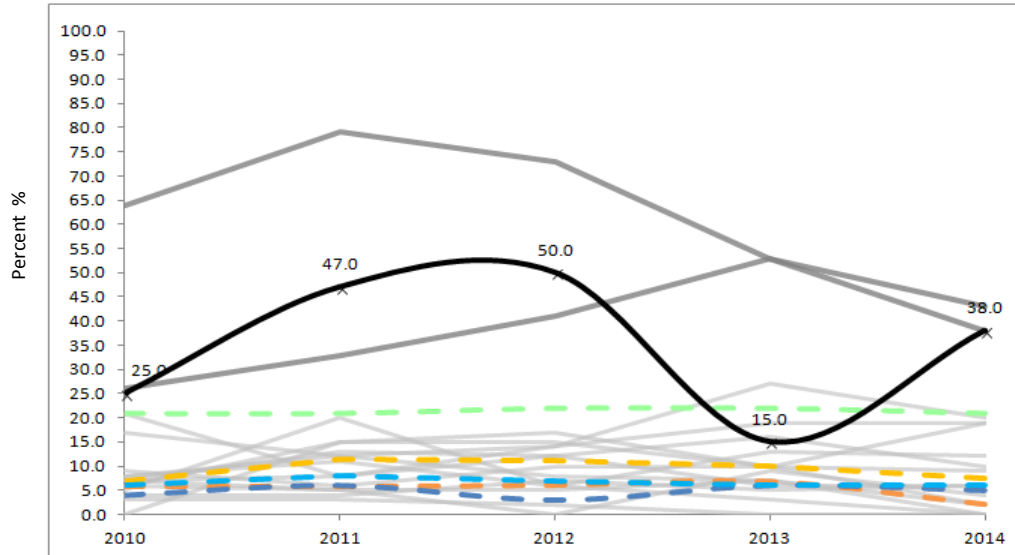
Median	35.5	42.0	35.0	41.0	44.5
First Quartile	32.0	39.5	32.0	35.0	38.1

Cells highlighted red: Median student growth percentiles (SGP) are not calculated if the number of students included in the aggregated SGP is less than 20.

*Please note that the statewide and district figures are averages across the unique grade configuration for each year of the selected charter school.

Pioneer Charter School of Science - Everett - Est. 2007 (Max Grade Span - 07-12)

MCAS - Math %P/A - SWD



MCAS - Math % Proficient/Advanced Students with Disabilities

	2010	2011	2012	2013	2014
Charter School	25.0	47.0	50.0	15.0	38.0
Statewide Average*	21.0	21.0	22.0	22.0	21.0
Everett (District)*	4.0	6.0	3.0	6.0	5.0
Chelsea (District)*	6.0	8.0	7.0	6.0	6.0
Grades served per year	7-10	7-11	7-12	7-12	7-12

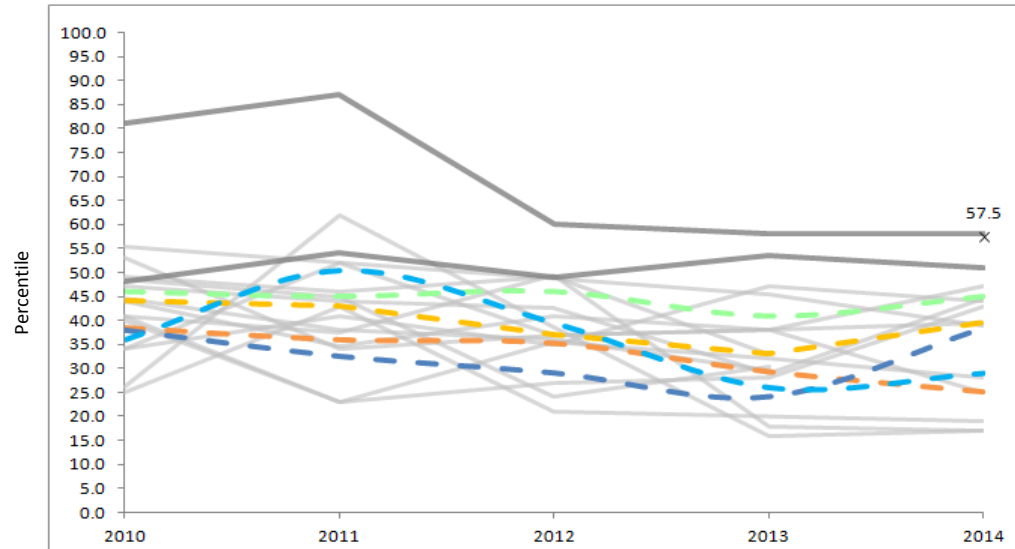
Median	7.0	11.5	11.0	10.0	7.5
First Quartile	5.8	5.8	6.0	6.8	2.0

Cells highlighted red: Achievement level percentages are not calculated for groups with fewer than 10 students.

*Please note that the statewide and district figures are averages across the unique grade configuration for each year of the selected charter school.

— Charter School
- - Statewide Avg
- - District
- - Median
- - First Quartile
- - Comp. Charter Schools
- - Comp. District Schools

MCAS - Math SGP - SWD



MCAS - Math Student Growth Percentile (SGP) Students with Disabilities

	2010	2011	2012	2013	2014
Charter School	38.0	32.5	29.0	24.0	38.5
Statewide Average*	46.0	45.0	46.0	41.0	45.0
Everett (District)*	38.0	32.5	29.0	24.0	38.5
Chelsea (District)*	36.0	50.5	39.5	26.0	29.0
Grades served per year	7-10	7-11	7-12	7-12	7-12

Median	44.3	43.0	37.0	33.0	39.5
First Quartile	38.5	36.0	35.3	29.3	25.0

Cells highlighted red: Median student growth percentiles (SGP) are not calculated if the number of students included in the aggregated SGP is less than 20.

*Please note that the statewide and district figures are averages across the unique grade configuration for each year of the selected charter school.

Pioneer Charter School of Science - Everett - Est. 2001 (Max Grade Span - PK-12)

PARCC 2015 - English Language Arts % Level 4 or 5					PARCC 2015 - Math % Level 4 or 5			
School Type*	All Students	Economically Disadvantaged	Students with Disabilities	English Language Learners	All Students	Economically Disadvantaged	Students with Disabilities	English Language Learners
Charter School	MS	68.0	66.0	30.0	63.0	63.0		
Statewide Average*	MS	63.0	43.0	21.0	53.0	32.0	15.0	14.0
Everett*	ESMS	45.0	40.0	12.0	36.0	32.0	10.0	14.0
Chelsea*	MS	19.0	17.0	1.0	20.0	19.0	2.0	5.0

PARCC 2015 - English Language Arts Transitional Student Growth Percentile (SGP)					PARCC 2015 - Math Transitional Student Growth Percentile (SGP)			
School Type*	All Students	Economically Disadvantaged	Students with Disabilities	English Language Learners	All Students	Economically Disadvantaged	Students with Disabilities	English Language Learners
Charter School	MS	49.0	43.5		53.5	57.0		
Statewide Average*	MS	49.0	47.0	42.0	49.0	46.0	43.0	52.0
Everett*	ESMS	50.0	47.0	49.0	50.0	51.0	46.0	55.0
Chelsea*	MS	33.0	32.0	30.0	33.0	32.0	30.0	37.0

Cells highlighted in red: Achievement level percentages are not calculated for groups with fewer than 10 students and transitional SGP is not calculated if the number of students included in the aggregated SGP is less than 20.

*Note: State and District results only include schools in the following school type categories based on the grades served in the most recent year: Elementary School (ES), usually serving grades K-5 or K-6; Elementary-Middle School (ESMS), usually serving grades K-8; and Middle School (MS), usually serving grades 6-8 or 7-8.

Pioneer Charter School of Science - Everett - Est. 2001 (Max Grade Span - PK-12)

MCAS 2015 - Grade 10 - English Language Arts % Proficient/Advanced					MCAS 2015 - Grade 10 - Math % Proficient/Advanced			
All Students	Economically Disadvantaged	Students with Disabilities	English Language Learners	All Students	Economically Disadvantaged	Students with Disabilities	English Language Learners	
Charter School	100.0	100.0		94.0	100.0			
Statewide Average*	91.0	83.0	68.0	79.0	62.0	40.0	30.0	
Everett*	86.0	86.0	43.0	65.0	64.0	17.0	17.0	
Chelsea*	78.0	78.0	44.0	49.0	43.0	12.0	18.0	

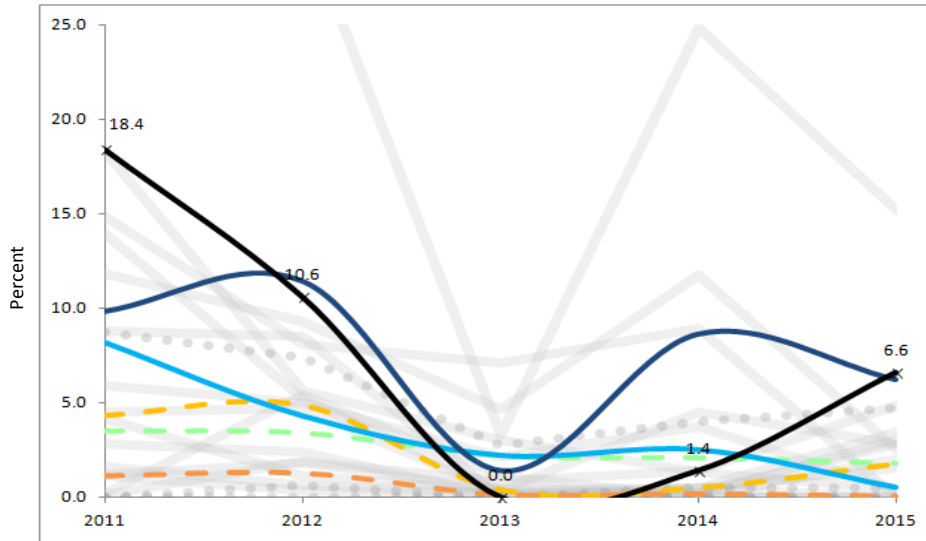
MCAS 2015 - Grade 10 - English Language Arts Student Growth Percentile (SGP)					MCAS 2015 - Grade 10 - Math Student Growth Percentile (SGP)			
All Students	Economically Disadvantaged	Students with Disabilities	English Language Learners	All Students	Economically Disadvantaged	Students with Disabilities	English Language Learners	
Charter School	38.5			64.5				
Statewide Average*	51.0	47.0	43.0	50.0	46.0	46.0	50.0	
Everett*	58.0	56.0	38.5	57.0	59.0	37.5		
Chelsea*	47.0	43.0	28.5	47.0	43.0	28.5		

Cells highlighted in red: Achievement level percentages are not calculated for groups with fewer than 10 students and transitional SGP is not calculated if the number of students included in the aggregated SGP is less than 20.

*Note: State and District results only include grade 10 in the most recent year.

Pioneer Charter School of Science - Everett - Est. 2007 (Max Grade Span - 07-12)

Student Indicator - In-School Suspension %



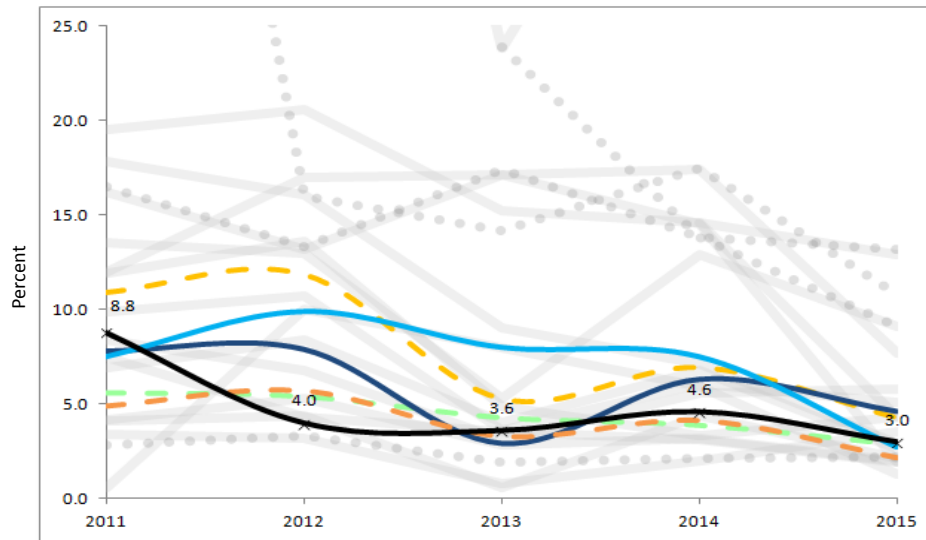
In-School Suspension %

	2011	2012	2013	2014	2015
Charter School	18.4	10.6	0.0	1.4	6.6
Statewide Average	3.5	3.4	2.2	2.1	1.8
Everett (District)	9.8	11.4	1.4	8.6	6.2
Chelsea (District)	8.2	4.3	2.2	2.5	0.5
Grades served per year	7-11	7-12	7-12	7-12	7-12

Median	4.3	4.9	0.4	0.5	1.8
First Quartile	1.1	1.3	0.1	0.2	0.0

— Charter School
 — Statewide Avg
 — District
 - - - Median
 - - - First Quartile
 - - - Comp. Charter Schools
 - - - Comp. District Schools

Student Indicator - Out-of-School Suspension %



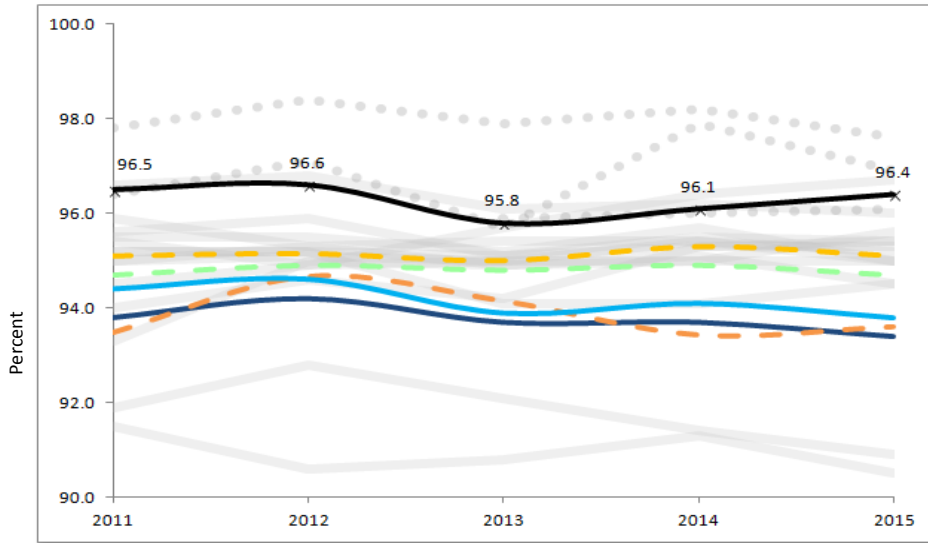
Out-of-School Suspension %

	2011	2012	2013	2014	2015
Charter School	8.8	4.0	3.6	4.6	3.0
Statewide Average	5.6	5.4	4.3	3.9	2.9
Everett (District)	7.8	7.9	2.9	6.3	4.6
Chelsea (District)	7.5	9.9	8.0	7.5	2.7
Grades served per year	7-11	7-12	7-12	7-12	7-12

Median	10.9	11.9	5.3	7.0	4.3
First Quartile	4.9	5.7	3.3	4.1	2.2

Pioneer Charter School of Science - Everett - Est. 2007 (Max Grade Span - 07-12)

Student Indicator - Attendance %



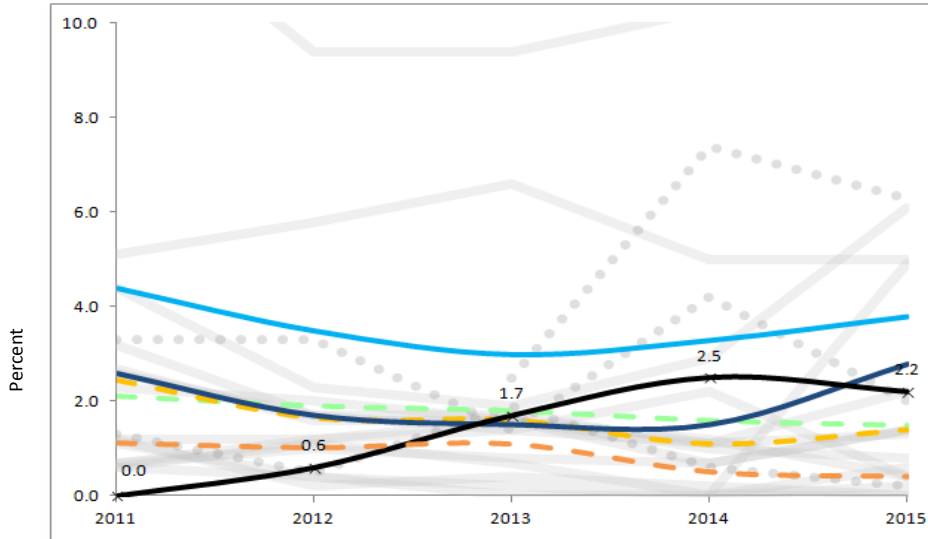
Attendance %

	2011	2012	2013	2014	2015
Charter School	96.5	96.6	95.8	96.1	96.4
Statewide Average	94.7	94.9	94.8	94.9	94.7
Everett (District)	93.8	94.2	93.7	93.7	93.4
Chelsea (District)	94.4	94.6	93.9	94.1	93.8
Grades served per year	7-11	7-12	7-12	7-12	7-12

Median	95.1	95.2	95.0	95.3	95.1
First Quartile	93.5	94.7	94.2	93.4	93.6

— Charter School
 — Statewide Avg
 — District
 - - - Median
 - - - First Quartile
 — Comp. Charter Schools
 — Comp. District Schools

Student Indicator - Retention %



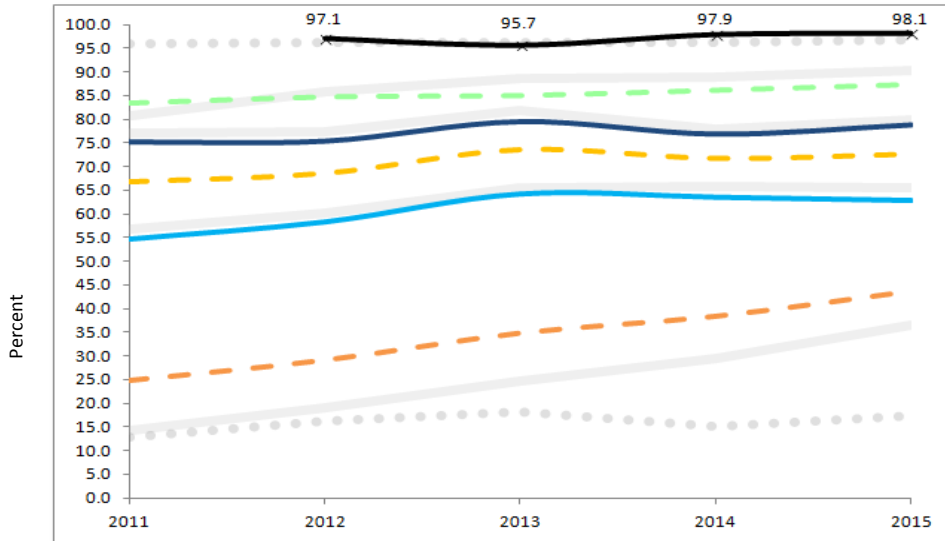
Retention %

	2011	2012	2013	2014	2015
Charter School	0.0	0.6	1.7	2.5	2.2
Statewide Average	2.1	1.9	1.8	1.6	1.5
Everett (District)	2.6	1.7	1.5	1.5	2.8
Chelsea (District)	4.4	3.5	3.0	3.3	3.8
Grades served per year	7-11	7-12	7-12	7-12	7-12

Median	2.5	1.7	1.6	1.1	1.4
First Quartile	1.1	1.0	1.1	0.5	0.4

Pioneer Charter School of Science - Everett - Est. 2007 (Max Grade Span - 07-12)

Student Indicator - 4-yr Graduation %



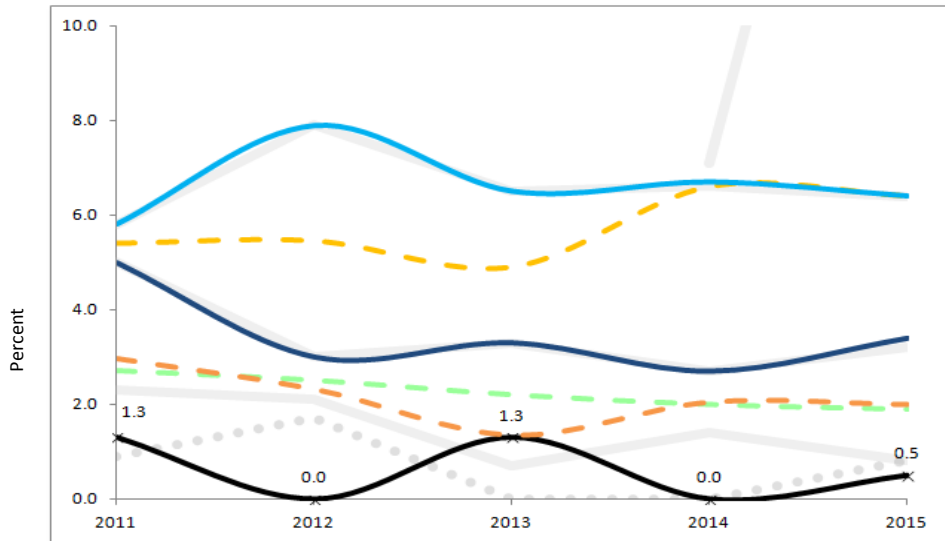
4-Year Graduation %

	2011	2012	2013	2014	2015
Charter School	97.1	95.7	97.9	97.9	98.1
Statewide Average	83.4	84.7	85.0	86.1	87.3
Everett (District)	75.2	75.4	79.6	76.9	78.9
Chelsea (District)	54.6	58.3	64.3	63.6	62.9
Grades served per year	7-11	7-12	7-12	7-12	7-12

Median	66.9	68.7	73.7	71.9	72.8
First Quartile	24.9	29.2	34.9	38.5	43.8

— Charter School
 - - - Statewide Avg
 — District
 - - - Median
 - - - First Quartile
 — Comp. Charter Schools
 — Comp. District Schools

Student Indicator - Dropout %



Dropout %

	2011	2012	2013	2014	2015
Charter School	1.3	0.0	1.3	0.0	0.5
Statewide Average	2.7	2.5	2.2	2.0	1.9
Everett (District)	5.0	3.0	3.3	2.7	3.4
Chelsea (District)	5.8	7.9	6.5	6.7	6.4
Grades served per year	7-11	7-12	7-12	7-12	7-12

Median	5.4	5.5	4.9	6.6	6.4
First Quartile	3.0	2.3	1.4	2.1	2.0