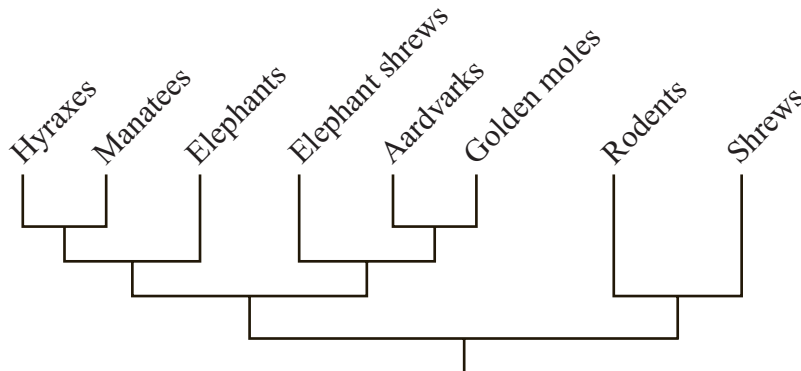


Elephant Shrew



Shrew

For many years, scientists had classified elephant shrews in the same family as shrews. In the 1990s, however, scientists gathered evidence for the evolutionary tree below and reclassified elephant shrews into a different family from shrews.



- Describe the **most likely** reason why scientists originally classified elephant shrews with shrews.
- Using the evolutionary tree, identify the groups to which elephant shrews are most closely related.
- Identify and explain the evidence scientists **most likely** used to build the evolutionary tree and reclassify elephant shrews.
- Identify **one** other type of evidence that scientists use to determine evolutionary relationships and build evolutionary trees.