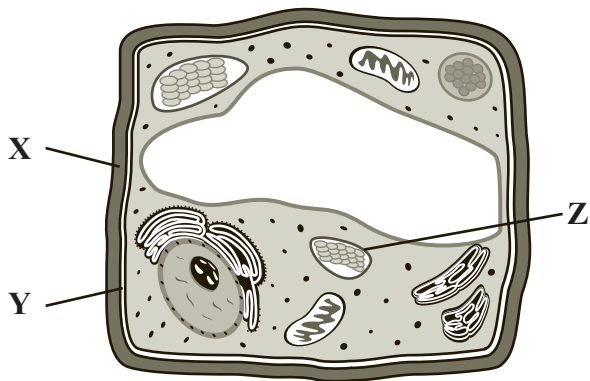


32

The diagram below represents a plant cell with three structures labeled X, Y, and Z.



Plant cells and fungal cells have many of the same types of organelles. Structures X and Y are found in both plant cells and fungal cells. Structure Z is found in plant cells, but not in fungal cells.

- Identify structure Y **and** describe its main function.
- Identify structure Z **and** explain how plants use this structure to survive.
- Explain how fungi can survive without structure Z.