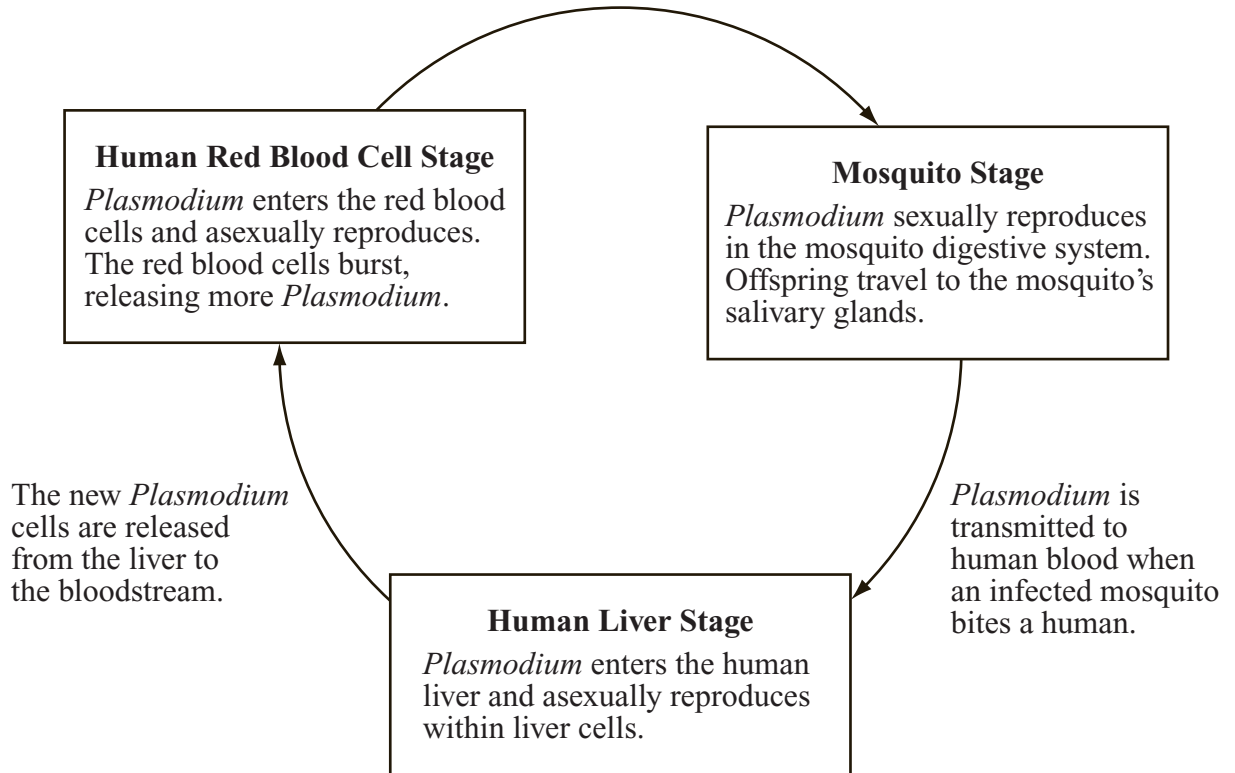


*Plasmodium* is a genus of organisms in the kingdom Protista. Four species of *Plasmodium* cause a disease called malaria in humans. *Plasmodium* uses both humans and female *Anopheles* mosquitoes to complete its life cycle. Mosquitoes carry *Plasmodium* and transmit it from one human to another. The diagram below represents a simplified life cycle of *Plasmodium*.

### Life Cycle of *Plasmodium*

*Plasmodium* is transmitted to a mosquito when the mosquito bites an infected human.



Humans experience malaria symptoms during the red blood cell stage. These include fatigue, high fever, and other flu-like symptoms. Malaria can be fatal if it is not treated. Some efforts to prevent malaria focus on eliminating mosquito populations, but a rise in the number of pesticide-resistant mosquitoes is making these efforts less effective.