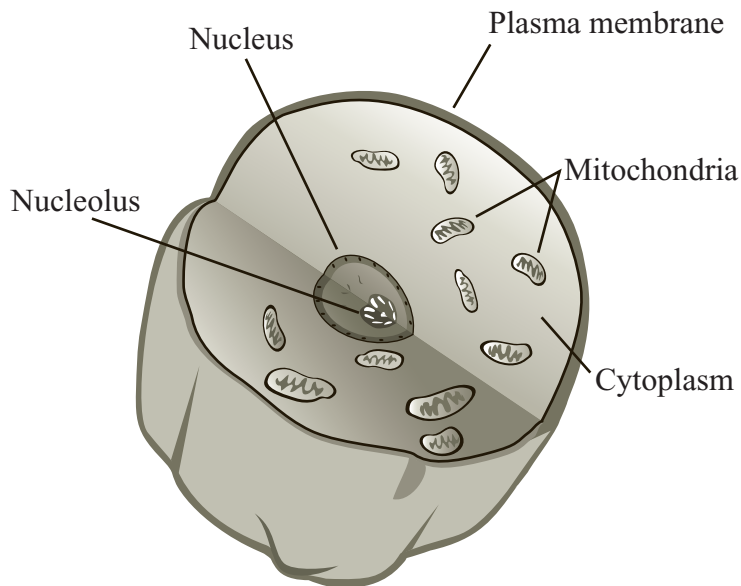


Clara made a model of an animal cell for science class. Her model is shown below.



- Identify **two** animal cell structures that are missing from Clara's model.
- Describe the function of **each** cell structure you identified in part (a).

The model contains a large number of mitochondria.

- Identify the main role of mitochondria in animal cells.
- Identify one type of animal cell that typically contains large numbers of mitochondria.