



Massachusetts Department of  
ELEMENTARY & SECONDARY  
EDUCATION

## **Pioneer Valley Performing Arts Charter School – Report on Conditions**

---

January 2013



This document was prepared by the  
Massachusetts Department of Elementary and Secondary Education  
Mitchell D. Chester, Ed.D.  
Commissioner

The Massachusetts Department of Elementary and Secondary Education, an affirmative action employer, is committed to ensuring that all of its programs and facilities are accessible to all members of the public. We do not discriminate on the basis of age, color, disability, national origin, race, religion, sex, gender identity, or sexual orientation.

Inquiries regarding the Department's compliance with Title IX and other civil rights laws may be directed to the Human Resources Director, 75 Pleasant St., Malden, MA 02148-4906. Phone: 781-338-6105.

© 2012 Massachusetts Department of Elementary and Secondary Education  
*Permission is hereby granted to copy any or all parts of this document for non-commercial educational purposes. Please credit the "Massachusetts Department of Elementary and Secondary Education."*

*This document printed on recycled paper*

Massachusetts Department of Elementary and Secondary Education  
75 Pleasant Street, Malden, MA 02148-4906  
Phone 781-338-3000 TTY: N.E.T. Relay 800-439-2370  
[www.doe.mass.edu](http://www.doe.mass.edu)



**Pioneer Valley Performing Arts Charter School**

Mission statement: “PVPA Charter Public School offers its students intensive exposure to the performing arts within the context of an excellent college preparatory curriculum. The goal of PVPA is to provide students with a supportive and challenging environment that is responsive to multiple learning styles, emphasizes learning through the arts, and integrates creative and critical thinking throughout the curriculum.”

|                              |              |                             |   |
|------------------------------|--------------|-----------------------------|---|
| <b>Type of Charter</b>       | Commonwealth | <b>Location</b>             | South Hadley  |
| <b>Regional/Non-Regional</b> | Regional     | <b>Districts in Region</b>  | Agawam, Amherst, Ashfield, Belchertown, Charlton, Chesterfield, Chicopee, Colrain, Conway, Cummington, Deerfield, East Longmeadow, Easthampton, Erving, Florence, Goshen, Granby, Greenfield, Hadley, Hatfield, Haydenville, Holyoke, Huntington, Indian Orchard, Leeds, Leverett, Longmeadow, Ludlow, Monson, Montague, Northampton, Orange, Palmer, Pelham, Plainfield, Rutland, Shelburne, Shutesbury, South Deerfield, South Hadley, Southampton, Springfield, Sunderland, Three Rivers, Warren, Wendell, West Springfield, Westfield, Westhampton, Whately, Wilbraham, Williamsburg, and Worthington |
| <b>Year Opened</b>           | 1996         | <b>Year(s) Renewed</b>      | 2000, 2005, 2010  |
| <b>Maximum Enrollment</b>    | 400          | <b>Current Enrollment</b>   | 408   |
| <b>Students on Waitlist</b>  | 235          | <b>Chartered Grade Span</b> | 7-12  |

**Condition**

The following condition was imposed in December 2010:

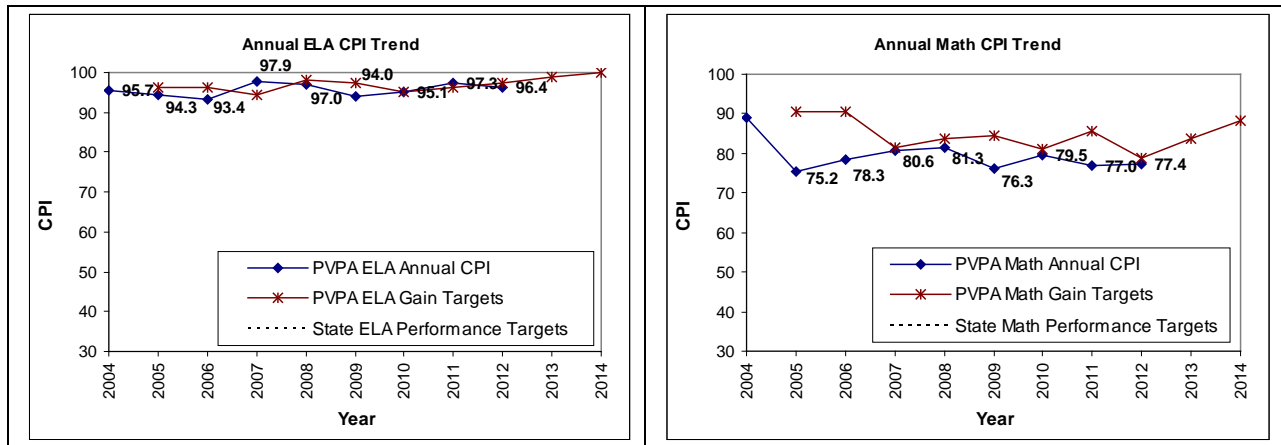
By December 2012, Pioneer Valley Performing Arts Charter School shall demonstrate that it is an academic success by:

- a. meeting academic growth targets in mathematics, as established by the Department of Elementary and Secondary Education, or
- b. achieving Adequate Yearly Progress in the aggregate in mathematics and for all statistically significant subgroups in mathematics in 2011 and 2012, and
- c. by meeting goals and objectives established in the school’s accountability plan.

PVPA has not met the condition related to meeting academic growth targets in mathematics. As shown in the table below, the school’s Student Growth Percentile (SGP) in mathematics continues to be well below the state median of 50.

| <b><i>PVPA Median Student Growth Percentile</i></b> |             |             |             |             |
|---|-------------|-------------|-------------|-------------|
| <b>Year</b>   | <b>2009</b> | <b>2010</b> | <b>2011</b> | <b>2012</b> |
| <b>English Language Arts</b>                        | <b>37.0</b> | <b>45.0</b> | <b>52.5</b> | <b>49.5</b> |
| <b>Mathematics</b>                                  | <b>35.0</b> | <b>38.0</b> | <b>41.0</b> | <b>35.5</b> |

Additionally, the school did not make AYP in 2011 for mathematics. CPI trends, as illustrated in the charts below, show that mathematics performance has not improved overall since the imposition of the condition.



PVPA was asked to create an accountability plan prior to the start of the 2011-12 school year, the school requested an extension until the fall of 2011. The Charter School Office received a draft accountability plan from the school in August 2012, a year after it was due, and is working to finalize it with the school. The school is currently tracking its performance against its draft accountability plan has reported progress in meeting its goals. PVPA has met, or is making progress toward meeting, a majority of measures contained in its accountability plan.