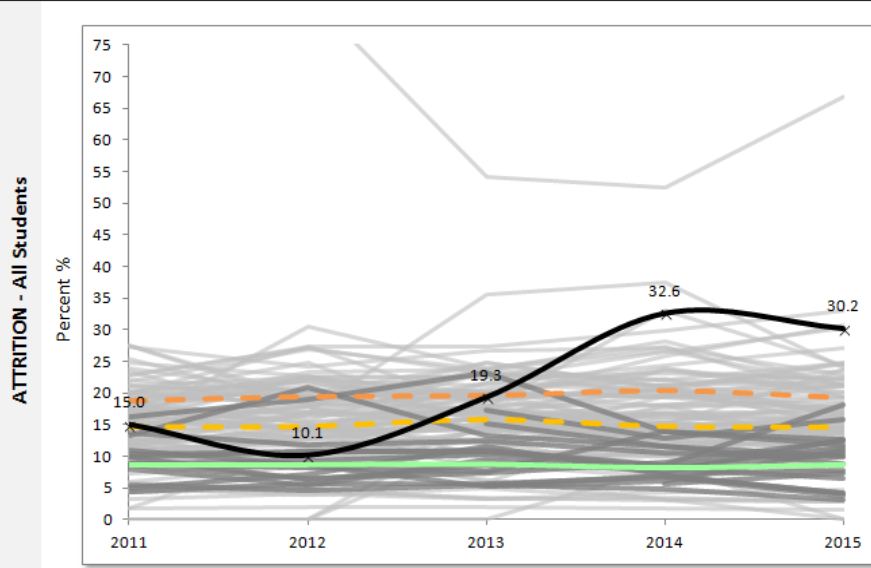


Appendix B: Additional Demographic Data Detail for Dorchester Collegiate Academy Charter School

Dorchester Collegiate Academy Charter School - Boston - Est. 2009 (Max Grade Span - 04-08)

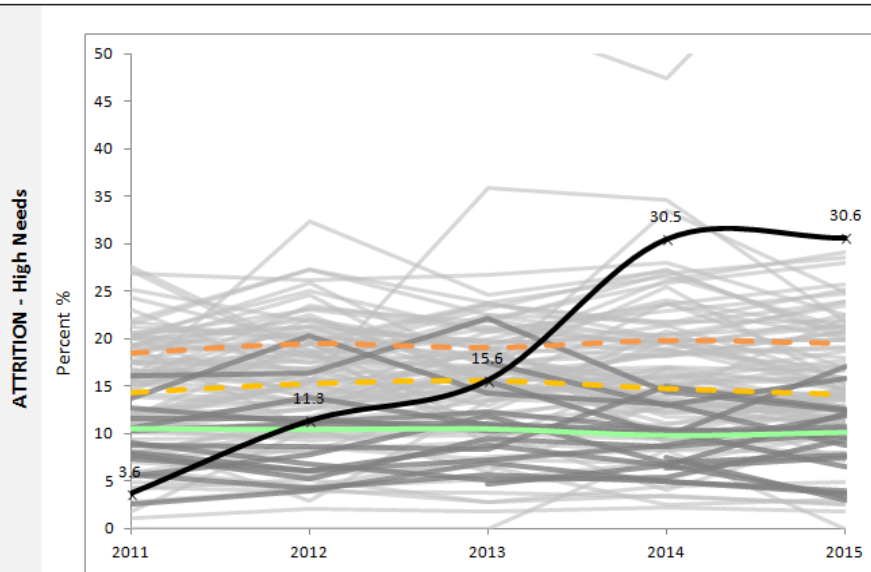


All Students Attrition %

	2011	2012	2013	2014	2015
Charter School	15.0	10.1	19.3	32.6	30.2
Statewide Average	8.7	8.7	8.8	8.2	8.7
Grades served per year	4-5	4-6	4-7	4-8	4-8

Median	14.8	14.8	15.9	14.8	14.7
Third Quartile	18.8	19.5	19.7	20.5	19.3

— Charter School
 — Statewide Avg
 - - - Median
 - - - Third Quartile
 — Comp. Charter Schools
 — Comp. District Schools



High Needs Attrition %

	2011	2012	2013	2014	2015
Charter School	3.6	11.3	15.6	30.5	30.6
Statewide Average	10.4	10.3	10.4	9.7	10.0
Grades served per year	4-5	4-6	4-7	4-8	4-8

Median	14.3	15.2	15.5	14.7	14.1
Third Quartile	18.5	19.5	19.1	19.8	19.5

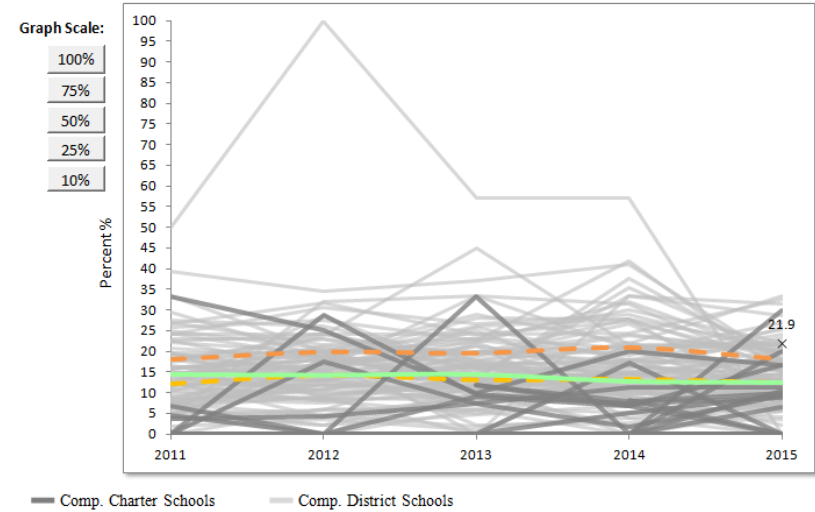
Appendix B: Additional Demographic Data Detail for Dorchester Collegiate Academy Charter School

English Language Learners:

ATTRITION RATES

Dorchester Collegiate Academy Charter School - Boston - Est. 2009 (Max Grade Span - 04-08)	
ALL	
English Language Learners	

School Name	Grades	2011	2012	2013	2014	2015
Dorchester Collegiate Academy Charter School - Boston - Est. 2009	4-8					21.9
Statewide Average		14.4	14.2	14.4	12.8	12.6
Median		12.3	14.2	13.2	13.3	12.5
Third Quartile		18.1	19.8	19.6	20.8	18.2

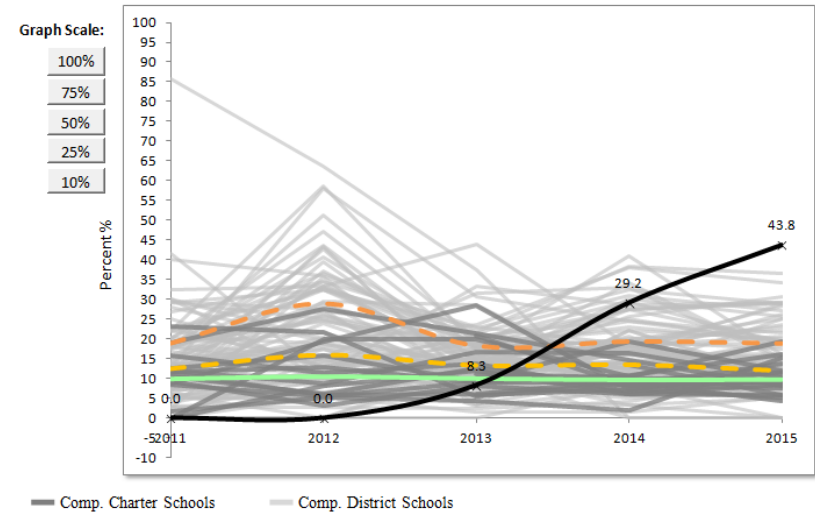


Students with Disabilities:

ATTRITION RATES

Dorchester Collegiate Academy Charter School - Boston - Est. 2009 (Max Grade Span - 04-08)	
ALL	
Students with Disabilities	

School Name	Grades	2011	2012	2013	2014	2015
Dorchester Collegiate Academy Charter School - Boston - Est. 2009	4-8	0.0	0.0	8.3	29.2	43.8
Statewide Average		10.0	10.5	10.1	9.7	9.8
Median		12.5	16.0	13.4	13.6	12.0
Third Quartile		18.8	28.9	18.2	19.3	18.8



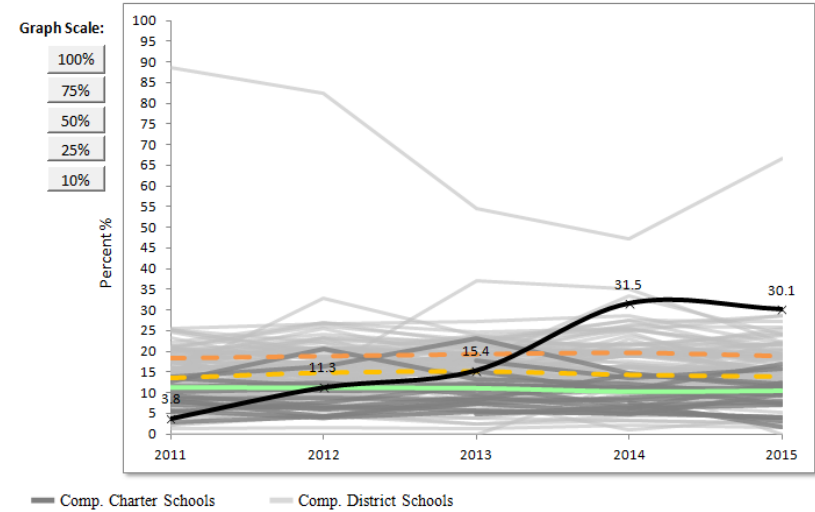
Appendix B: Additional Demographic Data Detail for Dorchester Collegiate Academy Charter School

Low Income:

ATTRITION RATES

Dorchester Collegiate Academy Charter School - Boston - Est. 2009 (Max Grade Span - 04-08)
ALL
Low Income

School Name	Grades	2011	2012	2013	2014	2015
Dorchester Collegiate Academy Charter School - Boston - Est. 2009	4-8	3.8	11.3	15.4	31.5	30.1
Statewide Average		11.4	11.3	11.2	10.4	10.6
Median		13.6	14.8	15.1	14.3	13.9
Third Quartile		18.3	18.8	19.2	19.6	18.8



Grade by Grade Attrition for 2013-2014 (students who were enrolled in June 2013 but not in fall 2013):

Student Group	4	5	6	7	All
All Students	25.7	27.3	53.1	25.0	32.6
Female	27.8	27.8	53.8	28.6	33.3
Male	23.5	26.7	52.6	22.2	31.9
High needs	15.0	21.4	53.6	27.6	30.5
Low income	0.0	24.0	56.0	29.6	31.5
Students w/disabilities	28.6			28.6	29.2
Afr. Amer./Black	34.6	32.0	52.0	20.0	35.4
Asian					
Hispanic/Latino		16.7		36.4	25.0

Appendix B: Additional Demographic Data Detail for Dorchester Collegiate Academy Charter School

Grade by Grade Attrition for 2014-2015 (students who were enrolled in June 2014 but not in fall 2014):

Student Group	4	5	6	7	All
All Students	33.3	38.9	31.4	17.9	30.2
Female	26.7	44.4	31.6	18.2	29.7
Male	37.5	33.3	31.3	17.6	30.7
High needs	33.3	37.1	33.3	18.9	30.6
ELL	15.4	30.0		28.6	21.9
Low income	33.3	37.1	31.3	18.9	30.1
Students w/disabilities	80.0	28.6	28.6	25.0	43.8
Afr. Amer./Black	35.5	33.3	34.6	14.8	29.5
Asian					
Hispanic/Latino	16.7	45.5	16.7	28.6	30.0

Grade by Grade Attrition for 2015-2016 (students who were enrolled in June 2015 but not in fall 2015)

Student Group	4	5	6	7	All
All Students	7.5	17.5	10.7	21.1	14.4
Female	0	13.3	10	21.1	11.7
Male	12.5	20	11.1	21.1	16.3
High needs	9.1	16.1	10	15.4	12.7
Economically Disadvantaged	11.1	16.7		9.1	10.7
ELL	28.6	12.5		33.3	19.2
Students w/disabilities	11.1		0	0	3.3
Afr. Amer./Black	7.7	16.7	5.3	23.3	14.3
Asian					
Hispanic/Latino	7.7	22.2	14.3	16.7	14.3

Additional Information:

Please note, incorrect data for low income enrollment for the 2013-14 school year was certified by Dorchester Collegiate Academy Charter School (DCACS). DCACS made errors in its Oct. 2013 SIMS data submission and subsequently certified a count of 71 out of 195 students being identified as low income, a significant underreporting of low income students. A subsequent unsuccessful attempt was made to submit and certify the appropriate data, which came to light when the school submitted its March 2014 SIMS data, which accurately reflected 182 of 191 (95 percent) students as free-lunch students.