



English Learner Education (ELE): Some Steps You Can Take

If your child is eligible for English Learner Education (ELE), the school district will recommend the program they believe will help your child. Massachusetts laws and regulations protect your right to make different choices. Partner with your school to boost your student's success!

Here is what you can do!

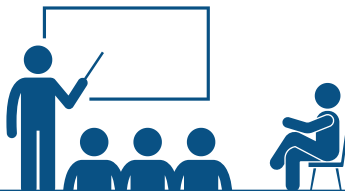
You can submit a request to enroll your child in an English Learner Education (ELE) program from those offered by the district.



You can attend available conferences or meetings to learn more about the English Learner Education (ELE) programs offered in the district.



You may also visit the recommended program to see if it's a good fit for your child. You can also request a different or new English Learner Education (ELE) program.



You can choose not to enroll your child in English Learner Education (ELE). You can also withdraw your child from a program after they start.



Learn more from your district's English Learner Parent Advisory Council (ELPAC), a group of families who meet together to talk about English Learner Education (ELE).



This resource was developed for the Massachusetts Department of Elementary and Secondary Education by the Massachusetts Statewide Family Engagement Center, a program of the Federation for Children with Special Needs.

Do you have questions? Contact your school: