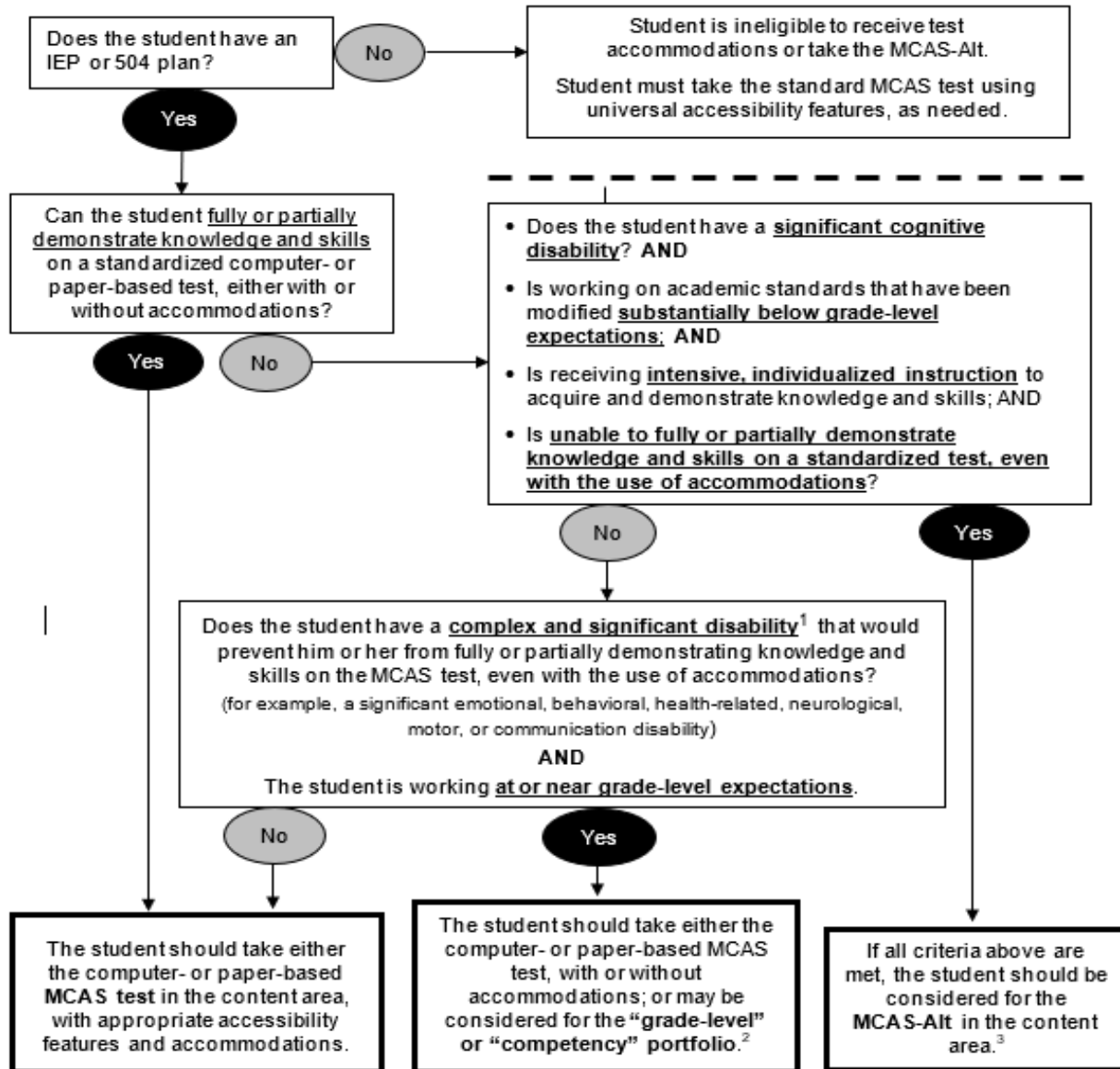


Decision-Making Tool for MCAS Participation by Students with Disabilities

The decision chart shown below may be used by IEP teams and 504 plan coordinators to make annual decisions regarding appropriate student participation in MCAS. Make separate decisions in *each content area* being assessed: ELA, mathematics, and science and technology/engineering.



¹ See the [Educator's Manual for the MCAS-Alt](#) for additional details on and examples of "complex and significant disabilities."

² See the [MCAS Grade-level and Competency Portfolio Manual](#) for details on submission of "grade-level" and "competency" portfolios.

³ Students who take the MCAS-Alt in high school will not earn a Competency Determination in the assessed subject and therefore will not be eligible to earn a high school diploma.